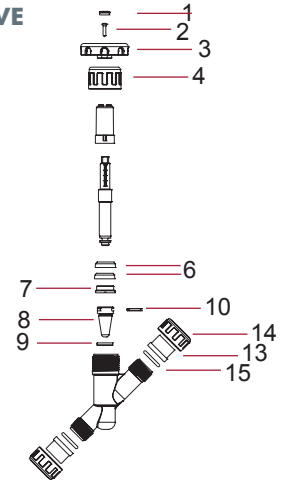
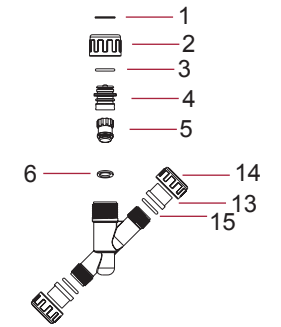


**VÁLVULAS DE ASIENTO INCLINADO DE REGULACIÓN - ANGLE SEAT REGULATOR VALVE**

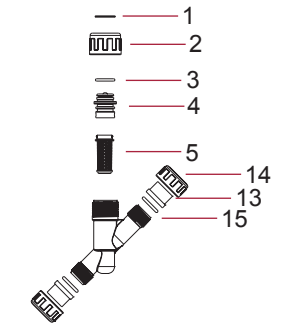
| D20 - 1/2" (REGULADORA - REGULATOR) |                              |                          |        |    |
|-------------------------------------|------------------------------|--------------------------|--------|----|
| CODE                                | DENOMINACIÓN                 | DESCRIPTION              | Fig.   | Q  |
| 22885 R 0124                        | Conjunto volante             | Handwheel assembly       | 1+2+3  | 4  |
| 22885 R 0102                        | Tuerca larga                 | Bonnetnut                | 4      | 10 |
| 22885 R 0125                        | Conjunto retén               | Sealing assembly         | 6+7    | 10 |
| 22885 R 0129                        | Conjunto cónico              | Conical assembly         | 8+9+10 | 5  |
| 723 R 0202035                       | Junta tórica EPDM (3 piezas) | EPDM o-ring (union)      | 15     | 10 |
| 02172 R 0101                        | Manguito enlace 3 piezas D20 | 20 mm connection (Union) | 13     | 10 |
| 02188 R 0103                        | Tuerca 3 piezas 1"           | Union nut 1"             | 14     | 10 |


**VÁLVULAS DE ASIENTO INCLINADO ANTI-RETORNO - ANGLE SEAT CHECK VALVE**

| D20 - 1/2" (ANTI-RETORNO - CHECK) |                              |                          |      |    |
|-----------------------------------|------------------------------|--------------------------|------|----|
| CODE                              | DENOMINACIÓN                 | DESCRIPTION              | Fig. | Q  |
| 22889 R 0112                      | Anillo seguridad             | Safety ring              | 1    | 10 |
| 22889 R 0107                      | Conjunto tapón + junta       | Cap + o-ring assembly    | 3+4  | 5  |
| 22889 R 0101                      | Conjunto eje anti-retorno    | Disc bonnet assembly     | 5+6  | 5  |
| 22889 R 0136                      | Junta plana eje              | Disc assembly            | 6    | 5  |
| 22885 R 0102                      | Tuerca larga                 | Bonnetnut                | 2    | 10 |
| 723 R 0202035                     | Junta tórica EPDM (3 piezas) | EPDM o-ring (union)      | 15   | 10 |
| 02172 R 0101                      | Manguito enlace 3 piezas D20 | 20 mm connection (union) | 13   | 10 |
| 02188 R 0103                      | Tuerca 3 piezas 1"           | Union nut 1"             | 14   | 10 |


**FILTRO EN LÍNEA - LINE STRAINER**

| D20 - 1/2" (FILTRO - LINE STRAINER) |                              |                          |      |    |
|-------------------------------------|------------------------------|--------------------------|------|----|
| CODE                                | DENOMINACIÓN                 | DESCRIPTION              | Fig. | Q  |
| 25713 R 0106                        | Rejilla                      | Screen                   | 5    | 5  |
| 22885 R 0102                        | Tuerca larga                 | Bonnetnut                | 2    | 10 |
| 22889 R 0112                        | Anillo seguridad             | Safety ring              | 1    | 10 |
| 22889 R 0107                        | Conjunto tapón + junta       | Cap + o-ring assembly    | 3+4  | 5  |
| 723 R 0202035                       | Junta tórica EPDM (3 piezas) | EPDM o-ring (union)      | 15   | 10 |
| 02172 R 0101                        | Manguito enlace 3 piezas D20 | 20 mm connection (union) | 13   | 10 |
| 02188 R 0103                        | Tuerca 3 piezas 1"           | Union nut 1"             | 14   | 10 |


**VÁLVULAS DE COMPUERTA ROTATORIA - ROTARY DISC VALVES**

| D50 - D63     |                                  |                               |            |   |
|---------------|----------------------------------|-------------------------------|------------|---|
| CODE          | DENOMINACIÓN                     | DESCRIPTION                   | Fig.       | Q |
| 16059 R 0124  | Conjunto maneta valv. 2 y 3 vías | Handle assembly 2-3 way valve | 1+2+3      | 4 |
| 16059 R 0121  | Conjunto eje valv. 2 y 3 vías    | Shaft assembly 2-3 way valve  | 9+10+11+12 | 4 |
| 16059 R 0129  | Conjunto juntas eje              | Shaft O-Rings kit             | 7+8        | 4 |
| 723 R 0758035 | Junta cuerpo                     | Body O-Ring                   | 6          | 5 |
| 16059 R 0013  | Tapa + conjunto juntas           | Cover + O-rings kit           | 6+7+8+13   | 1 |

| D63 - D75     |                              |                             |            |   |
|---------------|------------------------------|-----------------------------|------------|---|
| CODE          | DENOMINACIÓN                 | DESCRIPTION                 | Fig.       | Q |
| 41862 R 0124  | Conjunto maneta valv. 3 vías | Handle assembly 3-way valve | 1+2+3      | 4 |
| 41862 R 0121  | Conjunto eje valv. 3 vías    | Shaft assembly 3-way valve  | 9+10+11+12 | 4 |
| 41862 R 0129  | Conjunto juntas eje          | Shaft O-Rings kit           | 7+8        | 4 |
| 723 R 0853035 | Junta cuerpo                 | Body O-Ring                 | 6          | 5 |

