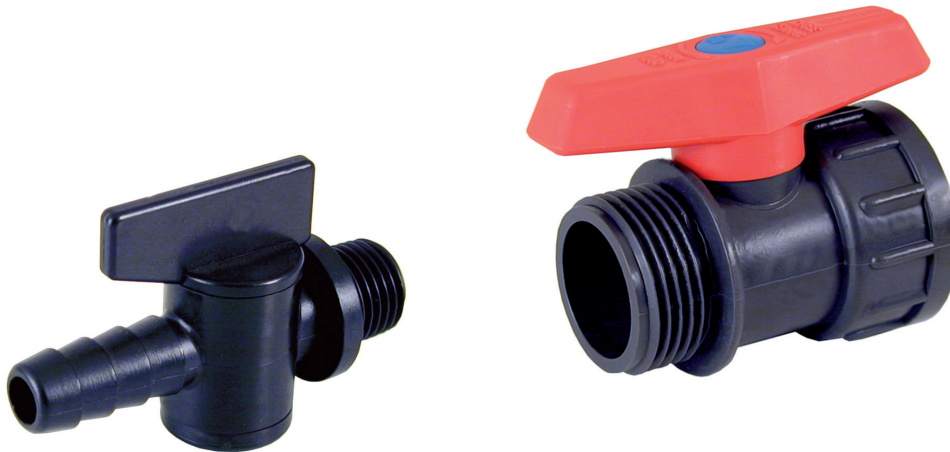


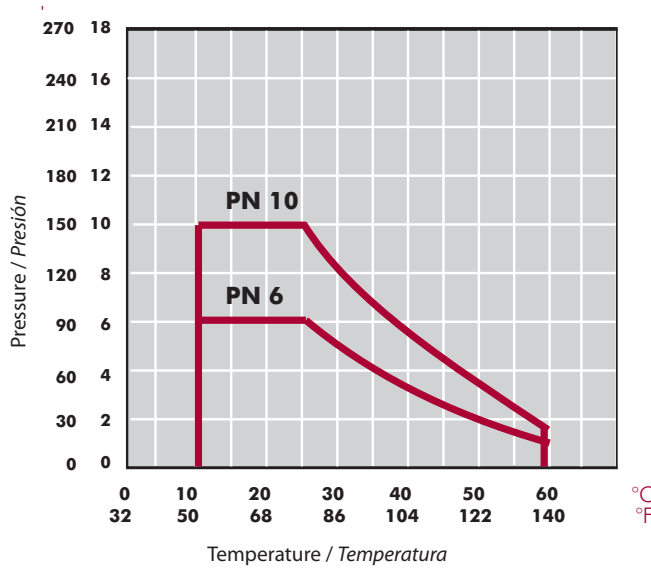
PVC-U AND ABS DRAIN VALVES

VÁLVULAS DE PURGA PVC-U Y ABS



Sizes	1/4" 3/4"	
Standards	Threaded - BSP	ISO 228-1
Working pressure	@ 20°C (73°F) 1/4": PN 6 (90 psi) 3/4": PN 10 (150 psi)	
Materials	O-rings: EPDM	
Characteristics	<ul style="list-style-type: none"> • Exclusive use in drain circuits. • Ball valve. • Compact body. • Available in ABS / PVC. • Connections to rigid pipe or PE flexible pipe. • Female threaded end connectors. 	<ul style="list-style-type: none"> • Utilizado exclusivamente en circuitos de purga. • Válvula de bola. • Cuerpo compacto. • Disponible en ABS / PVC. • Conexiones a tubo rígido o con espiga para manguera flexible de PE. • Sistema de conexionado roscar hembra.
Certifications		

PRESSURE / TEMPERATURE GRAPH
DIAGRAMA PRESIÓN / TEMPERATURA



Life: 25 years
Hydrostatic maximum pressure a component may withstand in continuous service (without overpressure)

Vida útil: 25 años
Presión hidrostática máxima que un componente es capaz de soportar en servicio continuo (sin sobrepresión)

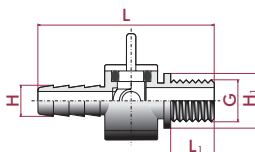
ABS. 90. MT - DRAIN VALVES

Drain valve

- ABS body
- BSP male thread
- Seating joint in HDPE
- O-rings in EPDM

Válvula de purga

- Cuerpo en ABS
- Roscar macho BSP
- Junta asiento bola en HDPE
- Juntas tóricas en EPDM



G	PN	REF.	CODE
¼"	6	05 90 612	11656

L	L ₁	H	H ₁
54	10	10	19

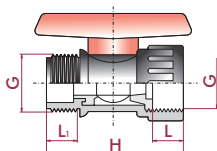
UP. 90. MT - DRAIN VALVES

Drain valve

- PVC-U body
- BSP male x female thread
- Seating joints in HDPE

Válvula de purga

- Cuerpo en PVC-U
- Roscar macho x hembra BSP
- Juntas asiento bola en HDPE



G	PN	REF.	CODE
¾"	10	05 90 625	02579

L	L ₁	H
12	12	50