

**FEATURES**

- PVC-U fittings for the PVC pipe union.
- Material: PVC-U.
- Injection moulding.
- Density: 1,4 g/cm<sup>3</sup>.
- Color: grey RAL 7024.
- Dimensions: socket fittings D16 to D400 and threaded fittings from 1/4" to 4".
- Dimensions:
  - Socket fittings according to EN 1452-3.
  - Threaded fittings according to ISO 7/1.
- For tubes according to EN 1452-2.
- Socket fittings: we recommend solvent cement THF basis.
- Threaded fittings: in order to guarantee the watertightness, PTFE thread-wrap tape must be used. In PVC-U metal unions, use PVC-U as the male.

**CARATTERISTICHE**

- Accessori in PVC-U per installazione con tubi PVC.
- Stampaggio per iniezione.
- Densità: 1,4 g/cm<sup>3</sup>.
- Colore: Grigio RAL 7024.
- Dimensioni: accessori ad incollaggio da D16 a D400 e accessori filettati da 1/4" a 4".
- Dimensioni:
  - Accessori ad incollaggio: secondo la norma EN 1452-3.
  - Accessori filettati: secondo la norma ISO 7/1.
- Per installazione con tubi secondo la norma EN 1452-2.
- Accessori ad incollaggio: si raccomanda l'uso di collanti a base di THF.
- Accessori filettati: si raccomanda l'uso di nastro Teflon®. Per unioni PVC-U-metallo, il maschio deve essere il PVC-U.

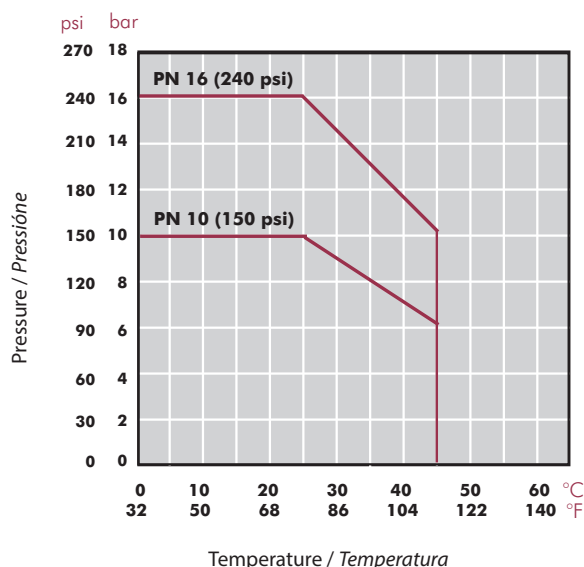


FIG.	Details	Dettagli
1	Logo, material, dimensions, PN	Logo, materiale, dimensioni, PN
2	European standard, N (Aenor), Kiwa o NF (Afnor)	Norma europea, N (Aenor), Kiwa o NF (Afnor)
3	Marked at 45°	Marcature a 45°

**TECHNICAL CHARACTERISTICS**  
**CARATTERISTICHE TECNICHE**

Unions Unioni	Sizes Dimensioni	Working pressure at 20°C Pressione di servizio a 20°C
Solvent socket / Incollaggio	D16 - D140	PN 16 (240 psi)
Solvent socket / Incollaggio	D160 - D315	PN10 (150 psi)
Threaded / Filetto	½" - 4"	PN 10 (150 psi)
Threaded reinforced / Filetto rinforzato	½" - 4"	PN 16 (240 psi)

**PRESSURE / TEMPERATURE GRAPH**  
**DIAGRAMMA PRESSIONE / TEMPERATURA**



Life: 50 years  
Hydrostatic maximum pressure a component may withstand in continuous service (without overpressure)

*Vita utile: 50 anni*  
*Pressione idrostatica massima considerando la capacità massima di sopportazione in servizio continuo (senza sovrappressione)*

**TOLERANCE CHART**  
**DIAGRAMMA TOLLERANZE**

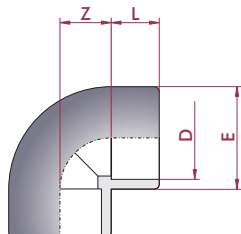
D	DN	Minimum diameter Diametro minimo	Maximum diameter Diametro massimo
16	10	16.1	16.3
20	15	20.1	20.3
25	20	25.1	25.3
32	25	32.1	32.3
40	32	40.1	40.3
50	40	50.1	50.3
63	50	63.1	63.3
75	65	75.1	75.3
90	80	90.1	90.3
110	100	110.1	110.4
125	110	125.1	125.4
140	125	140.2	140.5
160	150	160.2	160.5
200	175	200.2	200.6
225	200	225.3	225.7
250	225	250.3	250.8
315	300	315.4	316.0

**PVC-U ELBOWS**  
**GOMITI PVC-U**
**UP. 01. SF - GOMITO 90°**
**90° elbow**

- Female solvent socket
- Metric series

**Gomito 90°**

- Incollaggio femmina
- Serie metrica



D	DN	PN	RIF.	CODICE
16	10	16	05 01 016 <sup>3</sup>	<b>11655</b>
20	15	16	05 01 020 <sup>123</sup>	<b>01712</b>
25	20	16	05 01 025 <sup>123</sup>	<b>01713</b>
32	25	16	05 01 032 <sup>23</sup>	<b>01714</b>
40	32	16	05 01 040 <sup>23</sup>	<b>01715</b>
50	40	16	05 01 050 <sup>23</sup>	<b>01716</b>
63	50	16	05 01 063 <sup>23</sup>	<b>01717</b>
75	65	16	05 01 075 <sup>23</sup>	<b>01718</b>
90	80	16	05 01 090 <sup>23</sup>	<b>01719</b>
110	100	16	05 01 110 <sup>3</sup>	<b>01720</b>
125	110	16	05 01 125 <sup>3</sup>	<b>01721</b>
140	125	16	05 01 140 <sup>3</sup>	<b>01722</b>
160	150	10	05 01 160 <sup>3</sup>	<b>01723</b>
200	175	10	05 01 200 <sup>3</sup>	<b>01724</b>
225	200	10	05 01 225 <sup>3</sup>	<b>01725</b>
250	225	10	05 01 250	<b>01726</b>
315	300	10	05 01 315	<b>01727</b>
400	353	5	05 01 400 <sup>*</sup>	<b>34807</b>

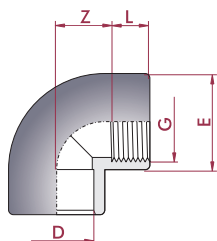
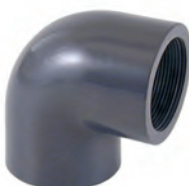
L	Z	E
14	10	25
16	11	27
19	14	33
22	17	41
26	21	50
31	26	61
38	33	76
44	39	90
51	46	108
61	56	131
69	64	148
76	71	164
86	81	180
106	101	225
119	114	252
131	126	284
164	159	352
206	202	439

**UP. 01. SFT - GOMITO 90°**
**90° adaptor elbow**

- Female solvent socket & BSP female thread
- Metric series

**Gomito 90° misto**

- Incollaggio femmina e filetto femmina BSP
- Serie metrica



D x G	DN	PN	RIF.	CODICE
20 x 1/2"	15	10	05 01 420	<b>01728</b>
25 x 3/4"	20	10	05 01 425	<b>01729</b>
32 x 1"	25	10	05 01 432	<b>01730</b>
40 x 1 1/4"	32	10	05 01 440	<b>01731</b>
50 x 1 1/2"	40	10	05 01 450	<b>01732</b>
63 x 2"	50	10	05 01 463	<b>01733</b>
75 x 2 1/2"	65	10	05 01 475 <sup>*</sup>	<b>22596</b>
90 x 3"	80	10	05 01 490 <sup>*</sup>	<b>22597</b>
110 x 4"	100	10	05 01 510 <sup>*</sup>	<b>22598</b>

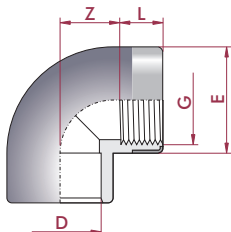
L	Z	E
14	11	28
16	14	34
19	17	43
20	21	54
20	26	63
24	33	78
44	40	89
51	48	106
61	58	129

**UP. 01. SFTR - GOMITO 90° RINFORZATO**
**90° adaptor reinforced elbow**

- Female solvent socket & BSP female thread
- Reinforcement in stainless steel
- Metric series

**Gomito 90° misto rinforzato**

- Incollaggio femmina e filetto femmina BSP
- Rinforzo in acciaio inox.
- Serie metrica



D x G	DN	PN	RIF.	CODICE
20 x 1/2"	15	16	05 01 820	<b>01740</b>
25 x 3/4"	20	16	05 01 825	<b>01741</b>
32 x 1"	25	16	05 01 832	<b>01742</b>
40 x 1 1/4"	32	16	05 01 840	<b>01743</b>
50 x 1 1/2"	40	16	05 01 850	<b>01744</b>
63 x 2"	50	16	05 01 863	<b>01745</b>

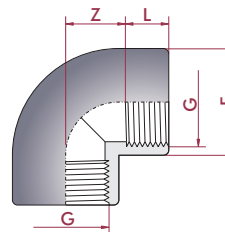
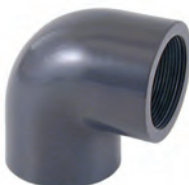
L	Z	E
14	11	28
16	14	34
19	17	43
20	21	54
20	26	63
24	33	78

**UP. 01. FT - GOMITO 90°**
**90° elbow**

- BSP female thread

**Gomito 90°**

- Filetto femmina BSP



G	DN	PN	RIF.	CODICE
1/2"	15	10	05 01 620	<b>01734</b>
3/4"	20	10	05 01 625	<b>01735</b>
1"	25	10	05 01 632	<b>01736</b>
1 1/4"	32	10	05 01 640	<b>01737</b>
1 1/2"	40	10	05 01 650	<b>01738</b>
2"	50	10	05 01 663	<b>01739</b>
2 1/2"	65	10	05 01 675 <sup>*</sup>	<b>22587</b>
3"	80	10	05 01 690 <sup>*</sup>	<b>22588</b>
4"	100	10	05 01 710 <sup>*</sup>	<b>22589</b>

L	Z	E
14	11	28
16	14	34
19	17	43
20	21	54
20	26	63
24	33	78
30	54	89
33	66	106
39	80	129

\* Distributed product  
\* Prodotto commercializzato

<sup>1</sup> AFNOR  
<sup>2</sup> KIWA  
<sup>3</sup> AENOR

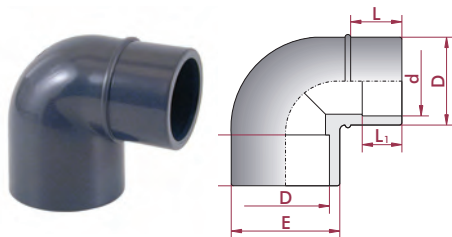
### UP. 29. SFG - GOMITO 90° RIDOTTO

**90° reducing elbow**

- Female solvent socket
- Metric series

**Gomito 90° ridotto**

- Incollaggio femmina
- Serie metrica



D x D - d	DN	PN	RIF.	CODICE
50 x 50 - 40	40 x 32	16	05 29 050	<b>02237</b>
63 x 63 - 50	50 x 40	16	05 29 063	<b>02238</b>

L	L <sub>1</sub>	E
31	26	61
38	31	76

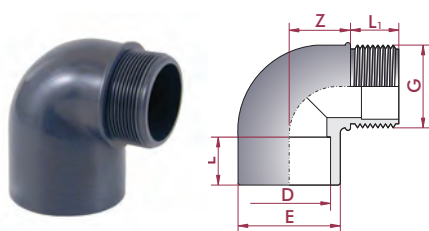
### UP. 29. SMT - GOMITO 90°

**90° elbow**

- Female solvent socket & BSP male thread
- Metric series

**Gomito 90°**

- Incollaggio femmina y filetto maschio BSP
- Serie metrica



D x G	DN	PN	RIF.	CODICE
50 x 1 1/2"	40	10	05 02 450	<b>02239</b>
63 x 2"	50	10	05 29 463	<b>02240</b>

L <sub>1</sub>	L	E	Z
21	31	61	38
25	38	76	47

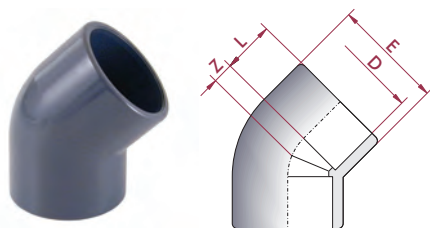
### UP. 02. SF - GOMITO 45°

**45° elbow**

- Female solvent socket
- Metric series

**Gomito 45°**

- Incollaggio femmina
- Serie metrica



D	DN	PN	RIF.	CODICE
16	10	16	05 02 016 <sup>3</sup>	<b>16307</b>
20	15	16	05 02 020 <sup>123</sup>	<b>01746</b>
25	20	16	05 02 025 <sup>123</sup>	<b>01747</b>
32	25	16	05 02 032 <sup>123</sup>	<b>01748</b>
40	32	16	05 02 040 <sup>123</sup>	<b>01749</b>
50	40	16	05 02 050 <sup>23</sup>	<b>01750</b>
63	50	16	05 02 063 <sup>23</sup>	<b>01751</b>
75	65	16	05 02 075 <sup>23</sup>	<b>01752</b>
90	80	16	05 02 090 <sup>23</sup>	<b>01753</b>
110	100	16	05 02 110 <sup>3</sup>	<b>01754</b>
125	110	16	05 02 125 <sup>3</sup>	<b>01755</b>
140	125	16	05 02 140 <sup>3</sup>	<b>01756</b>
160	150	10	05 02 160 <sup>3</sup>	<b>01757</b>
200	175	10	05 02 200 <sup>3</sup>	<b>01758</b>
225	200	10	05 02 225 <sup>3</sup>	<b>01759</b>
250	225	10	05 02 250 <sup>3</sup>	<b>01760</b>
315	300	10	05 02 315 <sup>3</sup>	<b>01761</b>
400	353	5	05 02 400 <sup>*</sup>	<b>34808</b>

L	Z	E
14	5	22
16	5	28
19	6	35
22	8	43
26	10	52
31	12	58
38	14	76
44	17	93
51	20	109
61	24	133
69	27	148
76	30	164
86	34	180
106	43	225
119	48	252
131	53	284
164	67	352
206	83	439

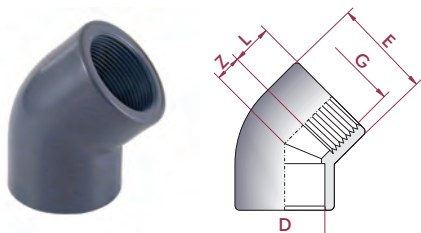
### UP. 02. SFT - GOMITO 45°

**45° adaptor elbow**

- Female solvent socket & BSP female thread
- Metric series

**Gomito 45° misto**

- Incollaggio femmina e filetto femmina BSP
- Serie metrica



D x G	DN	PN	RIF.	CODICE
20 x 1/2"	15	10	05 02 420	<b>01762</b>
25 x 3/4"	20	10	05 02 425	<b>01763</b>
32 x 1"	25	10	05 02 432	<b>01764</b>
40 x 1 1/4"	32	10	05 02 440	<b>01765</b>
50 x 1 1/2"	40	10	05 02 450	<b>01766</b>
63 x 2"	50	10	05 02 463	<b>01767</b>
75 x 2 1/2"	65	10	05 02 475 <sup>*</sup>	<b>22599</b>
90 x 3"	80	10	05 02 490 <sup>*</sup>	<b>22600</b>
110 x 4"	100	10	05 02 510 <sup>*</sup>	<b>22601</b>

L	Z	E
14	5	28
16	6	34
19	8	43
20	10	54
20	12	63
24	14	78
44	18	89
51	21	106
61	25	128

\* Distributed product  
\* Prodotto commercializzato

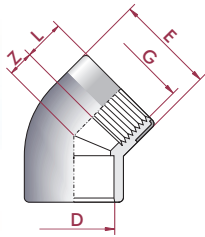
<sup>1</sup> AFNOR  
<sup>2</sup> KIWA  
<sup>3</sup> AENOR

**UP. 02. SFTR - GOMITO 45° RINFORZATO**
**45° adaptor reinforced elbow**

- Female solvent socket & BSP female thread
- Reinforcement in stainless steel
- Metric series

**Gomito 45° misto rinforzato**

- Incollaggio femmina e filetto femmina BSP
- Rinforzo in acciaio inox.
- Serie metrica



D x G	DN	PN	RIF.	CODICE
20 x 1/2"	15	16	05 02 820	<b>01774</b>
25 x 3/4"	20	16	05 02 825	<b>01775</b>
32 x 1"	25	16	05 02 832	<b>01776</b>
40 x 1 1/4"	32	16	05 02 840	<b>01777</b>
50 x 1 1/2"	40	16	05 02 850	<b>01778</b>
63 x 2"	50	16	05 02 863	<b>01779</b>

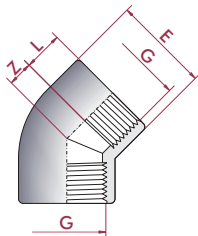
L	Z	E
14	5	28
16	6	34
19	8	43
20	10	54
20	12	63
24	14	78

**UP. 02. FT - GOMITO 45°**
**45° elbow**

- BSP female thread

**Gomito 45°**

- Filetto femmina BSP



G	DN	PN	RIF.	CODICE
1/2"	15	10	05 02 620	<b>01768</b>
3/4"	20	10	05 02 625	<b>01769</b>
1"	25	10	05 02 632	<b>01770</b>
1 1/4"	32	10	05 02 640	<b>01771</b>
1 1/2"	40	10	05 02 650	<b>01772</b>
2"	50	10	05 02 663	<b>01773</b>
2 1/2"	65	10	05 02 675 *	<b>22590</b>
3"	80	10	05 02 690 *	<b>22591</b>
4"	100	10	05 02 710 *	<b>22592</b>

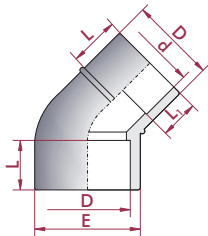
L	Z	E
14	5	28
16	6	34
19	8	43
20	10	54
20	12	63
24	14	78
30	32	89
34	39	106
40	47	129

**UP. 30. SFG - GOMITO 45° RIDOTTO**
**45° reducing elbow**

- Female and male solvent socket
- Metric series

**Gomito 45° ridotto**

- Incollaggio femmina e maschio
- Serie metrica



D x D - d	DN	PN	RIF.	CODICE
50 x 50 - 40	40 x 32	16	05 30 050	<b>02241</b>
63 x 63 - 50	50 x 40	16	05 30 063	<b>02242</b>

L	L <sub>1</sub>	E
31	26	61
38	31	76

\* Distributed product

\* Prodotto commercializzato

## PVC-U BEND

### CURVE PVC-U

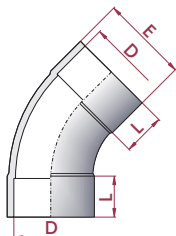
#### UP. 35. SF - CURVA 45°

##### 45° bend

- Female solvent socket
- Metric series

##### Curva 45°

- Incollaggio femmina
- Serie metrica



D	DN	PN	RIF.	CODICE
315	300	4	05 35 315 *	<b>05348</b>
400	353	4	05 35 400 *	<b>05349</b>

L	E
165	348
206	432

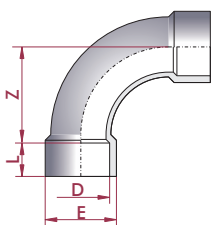
#### UP. 08. SF - CURVA 90°

##### 90° bend

- Female solvent socket
- Metric series

##### Curva 90°

- Incollaggio femmina
- Serie metrica



D	DN	PN	RIF.	CODICE
20	15	16	05 08 020 <sup>3</sup>	<b>01967</b>
25	20	16	05 08 025 <sup>3</sup>	<b>01968</b>
32	25	16	05 08 032 <sup>3</sup>	<b>01969</b>
40	32	16	05 08 040 <sup>3</sup>	<b>01970</b>
50	40	16	05 08 050 <sup>3</sup>	<b>01971</b>
63	50	16	05 08 063 <sup>3</sup>	<b>01972</b>
75	65	16	05 08 075 <sup>3</sup>	<b>01973</b>
90	80	16	05 08 090 <sup>3</sup>	<b>05331</b>
110	100	16	05 08 110 *	<b>05332</b>
125	110	10	05 08 125 *	<b>05333</b>
140	125	10	05 08 140 *	<b>05334</b>
160	150	10	05 08 160 *	<b>05335</b>
200	175	4	05 08 200 *	<b>05336</b>
225	200	4	05 08 225 *	<b>05337</b>
250	225	4	05 08 250 *	<b>05338</b>
315	300	4	05 08 315 *	<b>05339</b>
400	353	4	05 08 400 *	<b>05340</b>

L	Z	E
16	40	27
19	50	33
22	64	41
26	80	50
31	100	61
38	126	76
44	150	90
51	180	113
61	220	132
69	186	150
76	166	164
86	194	186
106	284	223
119	296	251
131	334	275
165	520	348
206	614	432

\* Distributed product

<sup>3</sup> AENOR

\* Prodotto commercializzato

**PVC-U TEES**

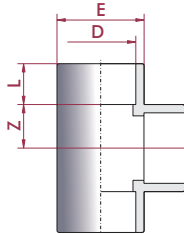
TI PVC-U

**UP. 03. SF - TI 90°**
**90° tee**

- Female solvent socket
- Metric series

**Ti 90°**

- Incollaggio femmina
- Serie metrica



D	DN	PN	RIF.	CODICE
16	10	16	05 03 016 <sup>3</sup>	<b>16308</b>
20	15	16	05 03 020 <sup>123</sup>	<b>01780</b>
25	20	16	05 03 025 <sup>123</sup>	<b>01781</b>
32	25	16	05 03 032 <sup>123</sup>	<b>01782</b>
40	32	16	05 03 040 <sup>23</sup>	<b>01783</b>
50	40	16	05 03 050 <sup>123</sup>	<b>01784</b>
63	50	16	05 03 063 <sup>123</sup>	<b>01785</b>
75	65	16	05 03 075 <sup>23</sup>	<b>01786</b>
90	80	16	05 03 090 <sup>23</sup>	<b>01787</b>
110	100	16	05 03 110 <sup>3</sup>	<b>01788</b>
125	110	16	05 03 125 <sup>3</sup>	<b>01789</b>
140	125	16	05 03 140 <sup>3</sup>	<b>01790</b>
160	150	10	05 03 160 <sup>3</sup>	<b>01791</b>
200	175	10	05 03 200 <sup>3</sup>	<b>01792</b>
225	200	10	05 03 225 <sup>3</sup>	<b>01793</b>
250	225	10	05 03 250 <sup>3</sup>	<b>01794</b>
315	300	10	05 03 315 <sup>3</sup>	<b>01795</b>
400	325	4	05 03 400 <sup>*</sup>	<b>05328</b>

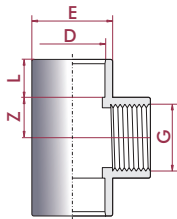
L	Z	E
14	9	22
16	11	27
19	14	33
22	17	41
26	21	50
31	26	63
38	33	78
44	39	90
51	46	108
61	56	131
69	64	148
76	71	164
86	81	186
106	101	228
119	114	255
131	126	284
164	159	356
206	280	432

**UP. 03. SFT - TI 90°**
**90° adaptor tee**

- Female solvent socket & BSP female thread
- Metric series

**Ti 90° mista**

- Incollaggio femmina e filetto femmina BSP
- Serie metrica



D x G	DN	PN	RIF.	CODICE
20 x 1/2"	15	10	05 03 420	<b>01796</b>
25 x 3/4"	20	10	05 03 425	<b>01797</b>
32 x 1"	25	10	05 03 432	<b>01798</b>
40 x 1 1/4"	32	10	05 03 440	<b>01799</b>
50 x 1 1/2"	40	10	05 03 450	<b>01800</b>
63 x 2"	50	10	05 03 463	<b>01801</b>
75 x 2 1/2"	65	10	05 03 475 <sup>*</sup>	<b>22602</b>
90 x 3"	80	10	05 03 490 <sup>*</sup>	<b>22603</b>
110 x 4"	100	10	05 03 510 <sup>*</sup>	<b>22604</b>

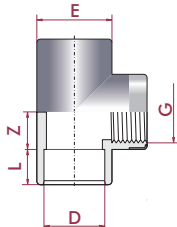
L	Z	E
14	11	28
16	14	34
19	17	43
20	21	54
20	26	63
24	33	78
44	39	89
51	47	106
61	57	129

**UP. 03. SFTR - TI RINFORZATA 90°**
**90° adaptor reinforced tee**

- Female solvent socket & BSP female thread
- Reinforcement in stainless steel
- Metric series

**Ti 90° mista rinforzata**

- Incollaggio femmina e filetto femmina BSP
- Rinforzo in acciaio inox.
- Serie metrica



D x G	DN	PN	RIF.	CODICE
20 x 1/2"	15	16	05 03 820	<b>01808</b>
25 x 3/4"	20	16	05 03 825	<b>01809</b>
32 x 1"	25	16	05 03 832	<b>01810</b>
40 x 1 1/4"	32	16	05 03 840	<b>01811</b>
50 x 1 1/2"	40	16	05 03 850	<b>01812</b>
63 x 2"	50	16	05 03 863	<b>01813</b>

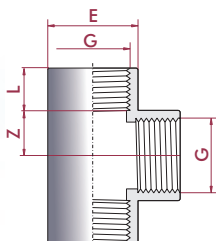
L	Z	E
14	11	28
16	14	34
19	17	43
20	21	54
20	26	63
24	33	78

**UP. 03. FT - TI 90°**
**90° tee**

- BSP female thread

**Ti 90°**

- Filetto femmina BSP



G	DN	PN	RIF.	CODICE
1/2"	15	10	05 03 620	<b>01802</b>
3/4"	20	10	05 03 625	<b>01803</b>
1"	25	10	05 03 632	<b>01804</b>
1 1/4"	32	10	05 03 640	<b>01805</b>
1 1/2"	40	10	05 03 650	<b>01806</b>
2"	50	10	05 03 663	<b>01807</b>
2 1/2"	65	10	05 03 675 <sup>*</sup>	<b>22593</b>
3"	80	10	05 03 690 <sup>*</sup>	<b>22594</b>
4"	100	10	05 03 710 <sup>*</sup>	<b>22595</b>

L	Z	E
14	11	28
16	14	34
19	17	43
20	21	54
20	26	63
24	33	78
30	53	89
34	65	106
40	79	129

\* Distributed product

\* Prodotto commercializzato

<sup>1</sup> AFNOR

<sup>2</sup> KIWA

<sup>3</sup> AENOR

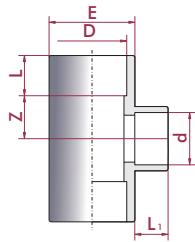
UP. 04. SFG - TI 90° RIDOTTA

**90° reducing tee**

- Female solvent socket
- Metric series

**Ti 90° ridotta**

- Incollaggio femmina
- Serie metrica



D x d	DN	PN	RIF.	CODICE
25 x 20	20 - 15	16	05 04 025	<b>01814</b>
32 x 25	25 - 20	16	05 04 032	<b>01815</b>
32 x 20	25 - 15	16	05 04 033	<b>01816</b>
40 x 32	32 - 25	16	05 04 040	<b>01817</b>
40 x 25	32 - 20	16	05 04 041	<b>01818</b>
40 x 20	32 - 15	16	05 04 042	<b>01819</b>
50 x 40	40 - 32	16	05 04 050	<b>01820</b>
50 x 32	40 - 25	16	05 04 051	<b>01821</b>
50 x 25	40 - 20	16	05 04 052	<b>01822</b>
50 x 20	40 - 15	16	05 04 053	<b>01823</b>
63 x 50	50 - 40	16	05 04 063	<b>01824</b>
63 x 40	50 - 32	16	05 04 064	<b>01825</b>
63 x 32	50 - 25	16	05 04 065	<b>01826</b>
63 x 25	50 - 20	16	05 04 066	<b>01827</b>
63 x 20	50 - 15	16	05 04 067	<b>01828</b>
75 x 63	65 - 50	16	05 04 075	<b>01829</b>
75 x 50	65 - 40	16	05 04 076	<b>01830</b>
75 x 40	65 - 32	16	05 04 077	<b>01831</b>
75 x 32	65 - 25	16	05 04 078	<b>01832</b>
90 x 75	80 - 65	16	05 04 090	<b>01833</b>
90 x 63	80 - 50	16	05 04 091	<b>01834</b>
90 x 50	80 - 40	16	05 04 092	<b>01835</b>
90 x 40	80 - 32	16	05 04 093	<b>01836</b>
110 x 90	100 - 80	16	05 04 110	<b>01837</b>
110 x 75	100 - 65	16	05 04 111	<b>01838</b>
110 x 63	100 - 50	16	05 04 112	<b>01839</b>
110 x 50	100 - 40	16	05 04 113	<b>01840</b>
125 x 110	110 - 100	16	05 04 125	<b>01841</b>
125 x 90	110 - 80	16	05 04 126	<b>01842</b>
125 x 75	110 - 65	16	05 04 127	<b>01843</b>
125 x 63	110 - 50	16	05 04 128	<b>01844</b>
140 x 125	125 - 110	16	05 04 140	<b>01845</b>
140 x 110	125 - 100	16	05 04 141	<b>01846</b>
140 x 90	125 - 80	16	05 04 142	<b>01847</b>
140 x 75	125 - 65	16	05 04 143	<b>01848</b>
160 x 140	150 - 125	10	05 04 160	<b>07688</b>
160 x 125	150 - 110	10	05 04 161	<b>07689</b>
160 x 110	150 - 100	10	05 04 162	<b>07690</b>
160 x 90	150 - 80	10	05 04 163	<b>07691</b>

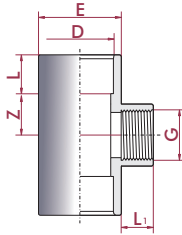
L	L <sub>1</sub>	Z	E
19	16	14	33
22	19	17	41
22	16	17	41
26	22	21	50
26	19	21	50
26	16	21	50
31	26	26	61
31	22	26	61
31	19	26	61
31	16	26	61
38	31	33	76
38	26	33	76
38	22	33	76
38	19	33	76
38	16	33	76
44	38	39	90
44	31	39	90
44	26	39	90
44	22	39	90
51	44	46	108
51	38	46	108
51	31	46	108
51	26	46	108
61	51	56	131
61	44	56	131
61	38	56	131
61	31	56	131
69	61	64	149
69	51	64	149
69	44	64	149
69	38	64	149
76	69	71	162
76	61	71	162
76	51	71	162
76	44	71	162
86	76	81	186
86	69	81	186
86	61	81	186
86	51	81	186

**UP. 04. SFTG - TI 90° RIDOTTA**
**90° reducing tee**

- Female solvent socket & BSP female thread
- Metric series

**Ti 90° ridotta**

- Incollaggio femmina e filetto femmina BSP
- Serie metrica



D x G	DN	PN	RIF.	CODICE
25 x 1/2"	20 - 15	10	05 04 425	<b>01849</b>
32 x 3/4"	25 - 20	10	05 04 432	<b>01850</b>
32 x 1/2"	25 - 15	10	05 04 433	<b>01851</b>
40 x 1"	32 - 25	10	05 04 440	<b>01852</b>
40 x 3/4"	32 - 20	10	05 04 441	<b>01853</b>
40 x 1/2"	32 - 15	10	05 04 442	<b>01854</b>
50 x 1 1/4"	40 - 32	10	05 04 450	<b>01855</b>
50 x 1"	40 - 25	10	05 04 451	<b>01856</b>
50 x 3/4"	40 - 20	10	05 04 452	<b>01857</b>
50 x 1/2"	40 - 15	10	05 04 453	<b>01858</b>
63 x 1 1/2"	50 - 40	10	05 04 463	<b>01859</b>
63 x 1 1/4"	50 - 32	10	05 04 464	<b>01860</b>
63 x 1"	50 - 25	10	05 04 465	<b>01861</b>
63 x 3/4"	50 - 20	10	05 04 466	<b>01862</b>
63 x 1/2"	50 - 15	10	05 04 467	<b>01863</b>
75 x 2"	65 - 50	10	05 04 475	<b>01864</b>
75 x 1 1/2"	65 - 40	10	05 04 476	<b>01865</b>
75 x 1 1/4"	65 - 32	10	05 04 477	<b>01866</b>
75 x 1"	65 - 25	10	05 04 478	<b>01867</b>
90 x 2 1/2"	80 - 65	10	05 04 490	<b>01868</b>
90 x 2"	80 - 50	10	05 04 491	<b>01869</b>
90 x 1 1/2"	80 - 40	10	05 04 492	<b>01870</b>
90 x 1 1/4"	80 - 32	10	05 04 493	<b>01871</b>

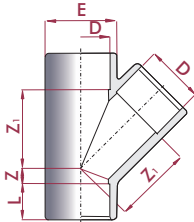
L	L <sub>1</sub>	Z	E
19	14	14	33
22	16	17	41
22	14	17	41
26	19	21	50
26	16	21	50
26	14	21	50
31	20	26	61
31	19	26	61
31	16	26	61
31	14	26	61
38	20	33	76
38	20	33	76
38	19	33	76
38	16	33	76
38	14	33	76
44	24	39	90
44	20	39	90
44	20	39	90
44	19	39	90
51	44	46	108
51	24	46	108
51	20	46	108
51	20	46	108

**UP. 36. SF - TI 45°**
**45° tee**

- Female solvent socket
- Metric series

**Ti 45°**

- Incollaggio femmina
- Serie metrica



D	DN	PN	RIF.	CODICE
20	15	16	05 36 020 *	<b>22583</b>
25	20	16	05 36 025 *	<b>22584</b>
32	25	16	05 36 032 *	<b>22585</b>
40	32	16	05 36 040	<b>22586</b>
50	40	10	05 36 050 <sup>3</sup>	<b>20155</b>
63	50	10	05 36 063 <sup>3</sup>	<b>20156</b>
75	65	10	05 36 075 *	<b>32804</b>
90	80	10	05 36 090 *	<b>32805</b>
110	100	10	05 36 110 *	<b>32806</b>

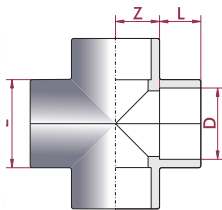
L	Z	Z <sub>1</sub>	E
16	7	29	28
19	7	36	34
22	8	44	42
26	10	54	51
31	13	67	61
38	15	83	76
44	18	101	91
51	20	122	106
61	27	149	133

**PVC-U CROSSES  
CROCI PVC-U**
**UP. 28. SF - CROCE**
**Cross**

- Female solvent socket
- Metric series

**Croce**

- Incollaggio femmina
- Serie metrica



D	DN	PN	RIF.	CODICE
20	15	16	05 28 020	<b>20143</b>
25	20	16	05 28 025	<b>20144</b>
32	25	16	05 28 032	<b>20145</b>
40	32	16	05 28 040	<b>20146</b>
50	40	16	05 28 050	<b>02235</b>
63	50	16	05 28 063	<b>02236</b>
75	65	16	05 28 075 *	<b>27958</b>
90	80	16	05 28 090 *	<b>22581</b>
110	100	16	05 28 110 *	<b>22582</b>

L	Z	E
16	11	29
19	14	35
22	17	43
26	21	52
31	26	63
38	33	79
42	39	92
51	46	106
61	56	130

\* Distributed product  
\* Prodotto commercializzato

<sup>3</sup> AENOR

## PVC-U SOCKETS MANICOTTI PVC-U

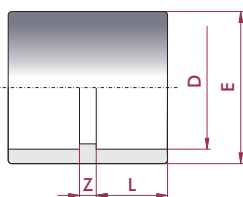
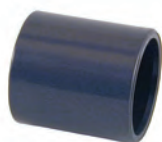
### UP. 05. SF - MANICOTTO

#### Socket

- Female solvent socket
- Metric series

#### Manicotto

- Incollaggio femmina
- Serie metrica



D	DN	PN	RIF.	CODICE
16	10	16	05 05 016 <sup>3</sup>	<b>16309</b>
20	15	16	05 05 020 <sup>123</sup>	<b>01872</b>
25	20	16	05 05 025 <sup>123</sup>	<b>01873</b>
32	25	16	05 05 032 <sup>123</sup>	<b>01874</b>
40	32	16	05 05 040 <sup>123</sup>	<b>01875</b>
50	40	16	05 05 050 <sup>123</sup>	<b>01876</b>
63	50	16	05 05 063 <sup>123</sup>	<b>01877</b>
75	65	16	05 05 075 <sup>123</sup>	<b>01878</b>
90	80	16	05 05 090 <sup>123</sup>	<b>01879</b>
110	100	16	05 05 110 <sup>13</sup>	<b>01880</b>
125	110	16	05 05 125 <sup>13</sup>	<b>01881</b>
140	125	16	05 05 140 <sup>13</sup>	<b>01882</b>
160	150	10	05 05 160 <sup>13</sup>	<b>01883</b>
200	175	10	05 05 200 <sup>3</sup>	<b>01884</b>
225	200	10	05 05 225 <sup>3</sup>	<b>01885</b>
250	225	10	05 05 250 <sup>3</sup>	<b>01886</b>
315	300	10	05 05 315 <sup>3</sup>	<b>01887</b>
400	375	6	05 05 400*	<b>05329</b>

L	Z	E
14	3	22
16	3	27
19	3	33
22	3	41
26	3	50
31	3	61
38	3	75
44	4	90
51	5	108
61	6	129
69	7	148
76	9	164
86	9	180
106	10	225
119	10	252
131	12	280
164	12	352
206	12	432

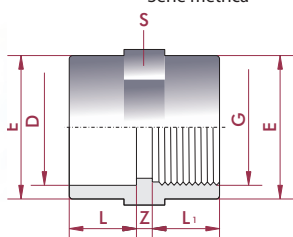
### UP. 05. SFT - MANICOTTO

#### Adaptor socket

- Female solvent socket & BSP female thread
- Metric series

#### Manicotto misto

- Incollaggio femmina e filetto femmina BSP
- Serie metrica



D x G	DN	PN	RIF.	CODICE
16 x 3/8"	12	10	05 05 416	<b>01888</b>
20 x 1/2"	15	10	05 05 420	<b>01889</b>
25 x 3/4"	20	10	05 05 425	<b>01890</b>
32 x 1"	25	10	05 05 432	<b>01891</b>
40 x 1 1/4"	32	10	05 05 440	<b>01892</b>
50 x 1 1/2"	40	10	05 05 450	<b>01893</b>
63 x 2"	50	10	05 05 463	<b>01894</b>
75 x 2 1/2"	65	10	05 05 475	<b>01895</b>
90 x 3"	80	10	05 05 490	<b>01896</b>
110 x 4"	90	10	05 05 510	<b>01897</b>

L	L <sub>1</sub>	Z	E	S
14	14	3	22	22
16	14	3	28	27
19	16	3	34	33
22	19	3	43	41
26	20	3	54	50
31	20	3	63	61
38	24	3	78	75
44	44	4	90	90
51	51	6	108	108
61	61	6	135	135

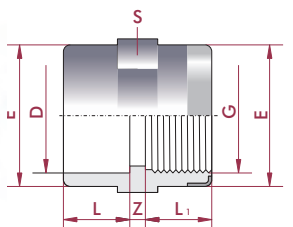
### UP. 05. SFTR - MANICOTTO RINFORZATO

#### Adaptor socket reinforced

- Female solvent socket & BSP female thread
- Reinforcement in stainless steel
- Metric series

#### Manicotto misto rinforzato

- Incollaggio femmina e filetto femmina BSP
- Rinforzo in acciaio inox.
- Serie metrica



D x G	DN	PN	RIF.	CODICE
20 x 1/2"	15	16	05 05 820	<b>01908</b>
25 x 3/4"	20	16	05 05 825	<b>01909</b>
32 x 1"	25	16	05 05 832	<b>01910</b>
40 x 1 1/4"	32	16	05 05 840	<b>01911</b>
50 x 1 1/2"	40	16	05 05 850	<b>01912</b>
63 x 2"	50	16	05 05 863	<b>01913</b>

L	L <sub>1</sub>	Z	E	S
16	14	3	28	27
19	16	3	34	33
22	19	3	43	41
26	20	3	54	50
31	20	3	63	61
38	24	3	78	75

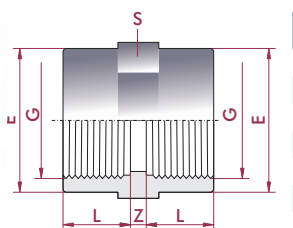
### UP. 05. FT - MANICOTTO

#### Threaded adaptor socket

- BSP female thread

#### Manicotto filetto femmina

- Filetto femmina BSP



G	DN	PN	RIF.	CODICE
3/8"	10	10	05 05 616	<b>01898</b>
1/2"	15	10	05 05 620	<b>01899</b>
3/4"	20	10	05 05 625	<b>01900</b>
1"	25	10	05 05 632	<b>01901</b>
1 1/4"	32	10	05 05 640	<b>01902</b>
1 1/2"	40	10	05 05 650	<b>01903</b>
2"	50	10	05 05 663	<b>01904</b>
2 1/2"	65	10	05 05 675	<b>01905</b>
3"	80	10	05 05 690	<b>01906</b>
4"	100	10	05 05 710	<b>01907</b>

L	Z	E	S
14	3	22	22
14	3	27	28
16	3	33	34
19	3	41	43
20	3	50	54
20	3	61	63
24	3	75	78
44	4	90	90
51	6	108	108
61	6	135	135

\* Distributed product  
\* Prodotto commercializzato

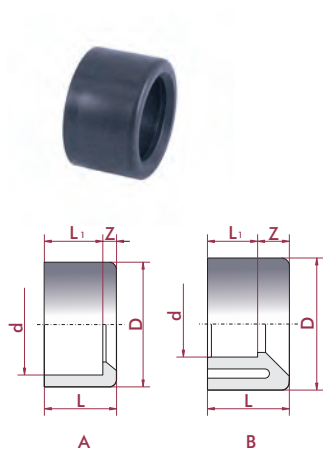
<sup>1</sup> AFNOR  
<sup>2</sup> KIWA  
<sup>3</sup> AENOR

**PVC-U REDUCERS**  
**RIDUZIONI PVC-U**
**UP. 06. SMF - BUSSOLA RIDUZIONE**
**Reducing bush**

- Male x female solvent socket
- Metric series

**Bussola riduzione**

- Incollaggio maschio x femmina
- Serie metrica



D x d	DN	PN	RIF.	CODICE
20 x 16	10	16	05 06 020 <sup>3</sup>	<b>01914</b>
25 x 20	15	16	05 06 025 <sup>23</sup>	<b>01915</b>
32 x 25	20	16	05 06 032 <sup>23</sup>	<b>01916</b>
32 x 20	15	16	05 06 033 <sup>3</sup>	<b>01917</b>
40 x 32	25	16	05 06 040 <sup>23</sup>	<b>01918</b>
40 x 25	20	16	05 06 041 <sup>3</sup>	<b>01919</b>
40 x 20	15	16	05 06 042 <sup>3</sup>	<b>01920</b>
50 x 40	32	16	05 06 050 <sup>23</sup>	<b>01921</b>
50 x 32	25	16	05 06 051 <sup>3</sup>	<b>01922</b>
50 x 25	20	16	05 06 052 <sup>3</sup>	<b>01923</b>
50 x 20	15	16	05 06 053 <sup>3</sup>	<b>01924</b>
63 x 50	40	16	05 06 063 <sup>23</sup>	<b>01925</b>
63 x 40	32	16	05 06 064 <sup>3</sup>	<b>01926</b>
63 x 32	25	16	05 06 065 <sup>3</sup>	<b>01927</b>
75 x 63	50	16	05 06 075 <sup>23</sup>	<b>01928</b>
75 x 50	40	16	05 06 076 <sup>3</sup>	<b>18685</b>
75 x 40	32	16	05 06 077 <sup>3</sup>	<b>18686</b>
90 x 75	65	16	05 06 090 <sup>23</sup>	<b>01929</b>
90 x 63	50	16	05 06 091 <sup>3</sup>	<b>18687</b>
90 x 50	40	16	05 06 092 <sup>3</sup>	<b>18688</b>
110 x 90	80	16	05 06 110 <sup>3</sup>	<b>01930</b>
110 x 75	65	16	05 06 111 <sup>3</sup>	<b>18689</b>
110 x 63	50	16	05 06 112 <sup>3</sup>	<b>18690</b>
125 x 110	100	16	05 06 125 <sup>3</sup>	<b>01931</b>
125 x 90	80	16	05 06 126 <sup>3</sup>	<b>18691</b>
125 x 75	65	16	05 06 127 <sup>3</sup>	<b>20142</b>
140 x 125	110	16	05 06 140 <sup>3</sup>	<b>01932</b>
140 x 110	100	16	05 06 141 <sup>3</sup>	<b>18692</b>
160 x 140	125	10	05 06 160 <sup>3</sup>	<b>01933</b>
160 x 110	100	10	05 06 162 <sup>3</sup>	<b>18693</b>
200 x 180	160	10	05 06 199 <sup>3</sup>	<b>01934</b>
200 x 160	150	10	05 06 200 <sup>3</sup>	<b>01935</b>
225 x 200	175	10	05 06 225 <sup>3</sup>	<b>01936</b>
225 x 160	150	10	05 06 226 <sup>3</sup>	<b>01937</b>
250 x 225	200	10	05 06 250 <sup>3</sup>	<b>01938</b>
250 x 200	175	10	05 06 251 <sup>3</sup>	<b>01939</b>
315 x 280	250	6	05 06 315	<b>10093</b>
315 x 250	225	6	05 06 316 <sup>*</sup>	<b>01940</b>
315 x 225	200	6	05 06 317 <sup>*</sup>	<b>01941</b>
400 x 315	300	6	05 06 400 <sup>*</sup>	<b>05330</b>

L	L <sub>1</sub>	Z	Mod.
16	14	2	A
19	16	3	A
22	19	3	A
22	16	6	A
26	22	4	A
26	19	7	A
26	16	10	B
31	26	5	A
31	22	9	B
31	19	12	B
31	16	15	B
38	31	7	A
38	26	12	B
38	22	16	B
44	38	6	A
44	31	13	B
44	26	18	B
51	44	7	A
51	38	13	B
51	31	20	B
61	51	10	A
61	44	17	B
61	38	23	B
69	61	8	A
69	51	18	B
69	44	25	B
76	69	8	A
76	61	15	B
86	76	10	A
86	61	25	B
106	96	10	A
106	86	20	B
119	106	13	A
119	86	33	B
131	119	12	A
131	106	25	B
164	131	33	B
164	119	45	B
206	163	42	B

\* Distributed product

\* Prodotto commercializzato

<sup>1</sup> AFNOR

<sup>2</sup> KIWA

<sup>3</sup> AENOR

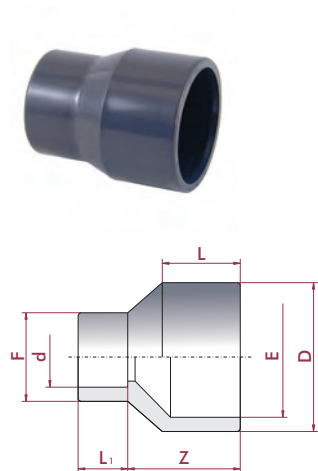
## UP. 09. SMF - RIDUZIONE CONICA

### Conical reducer

- Male x female solvent socket
- Metric series

### Riduzione conica

- Incollaggio maschio x femmina
- Serie metrica



D-E x d	DN	PN	RIF.	CODICE
32-25 x 25	20	16	05 09 032 <sup>3</sup>	<b>01974</b>
32-25 x 20	15	16	05 09 033 <sup>3</sup>	<b>01975</b>
40-32 x 32	25	16	05 09 040 <sup>3</sup>	<b>01976</b>
40-32 x 25	20	16	05 09 041 <sup>3</sup>	<b>01977</b>
40-32 x 20	15	16	05 09 042 <sup>3</sup>	<b>01978</b>
50-40 x 40	32	16	05 09 050 <sup>3</sup>	<b>01979</b>
50-40 x 32	25	16	05 09 051 <sup>3</sup>	<b>01980</b>
50-40 x 25	20	16	05 09 052 <sup>3</sup>	<b>01981</b>
50-40 x 20	15	16	05 09 053 <sup>3</sup>	<b>01982</b>
63-50 x 50	40	16	05 09 063 <sup>3</sup>	<b>01983</b>
63-50 x 40	32	16	05 09 064 <sup>3</sup>	<b>01984</b>
63-50 x 32	25	16	05 09 065 <sup>3</sup>	<b>01985</b>
63-50 x 25	20	16	05 09 066 <sup>3</sup>	<b>01986</b>
63-50 x 20	15	16	05 09 067 <sup>3</sup>	<b>01987</b>
75-63 x 63	50	16	05 09 075 <sup>3</sup>	<b>01988</b>
75-63 x 50	40	16	05 09 076 <sup>3</sup>	<b>01989</b>
75-63 x 40	32	16	05 09 077 <sup>3</sup>	<b>01990</b>
75-63 x 32	25	16	05 09 078 <sup>3</sup>	<b>01991</b>
90-75 x 75	65	16	05 09 090 <sup>3</sup>	<b>01992</b>
90-75 x 63	50	16	05 09 091 <sup>3</sup>	<b>01993</b>
90-75 x 50	40	16	05 09 092 <sup>3</sup>	<b>01994</b>
90-75 x 40	32	16	05 09 093 <sup>3</sup>	<b>01995</b>
110-90 x 90	80	16	05 09 110 <sup>3</sup>	<b>01996</b>
110-90 x 75	65	16	05 09 111 <sup>3</sup>	<b>01997</b>
110-90 x 63	50	16	05 09 112 <sup>3</sup>	<b>01998</b>
110-90 x 50	40	16	05 09 113 <sup>3</sup>	<b>01999</b>
125-110 x 90	80	16	05 09 126 <sup>3</sup>	<b>02000</b>
125-110 x 75	65	16	05 09 127 <sup>3</sup>	<b>02001</b>
125-110 x 63	50	16	05 09 128 <sup>3</sup>	<b>02002</b>
140-125 x 110	100	16	05 09 141 <sup>3</sup>	<b>02003</b>
140-125 x 80	80	16	05 09 142 <sup>3</sup>	<b>02004</b>
140-125 x 75	65	16	05 09 143 <sup>3</sup>	<b>02005</b>
160-140 x 125	110	10	05 09 161 <sup>13</sup>	<b>02006</b>
160-140 x 110	100	10	05 09 162 <sup>13</sup>	<b>02007</b>
160-140 x 90	80	10	05 09 163 <sup>3</sup>	<b>02008</b>
200-180 x 140	125	10	05 09 202	<b>02009</b>
200-180 x 125	110	10	05 09 203	<b>02010</b>
200-180 x 110	100	10	05 09 204	<b>02011</b>
225-200 x 160	150	10	05 09 227	<b>02012</b>
225-200 x 140	125	10	05 09 228	<b>02013</b>
225-200 x 125	110	10	05 09 229	<b>02014</b>
250-225 x 200	175	10	05 09 251	<b>02015</b>
250-225 x 160	150	10	05 09 253	<b>02016</b>
250-225 x 140	125	10	05 09 254	<b>02017</b>
315-280 x 200	175	6	05 09 318 *	<b>02018</b>
315-280 x 160	150	6	05 09 320 *	<b>02019</b>

L <sub>1</sub>	Z	F
19	30	33
16	30	27
22	36	38
19	36	33
16	36	27
26	44	48
22	44	41
19	44	33
16	44	27
31	54	61
26	54	50
22	54	41
19	54	33
16	54	27
38	62	73
31	62	61
26	62	50
22	62	41
44	74	87
38	74	75
31	74	61
26	74	50
51	88	105
44	88	90
38	88	75
31	88	61
51	100	105
44	100	90
38	100	75
61	111	130
51	111	105
44	111	90
69	126	148
61	126	130
51	126	105
76	154	157
69	154	140
61	154	130
86	171	180
76	171	160
69	171	140
106	194	225
86	194	180
76	194	157
106	233	225
86	233	180

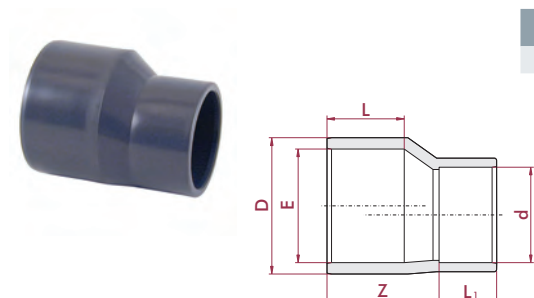
## UP. 09. SF - RIDUZIONE CONICA ECCENTRICA

### Excentric conical reducer

- Female solvent socket
- Metric series

### Riduzione conica eccentrica

- Incollaggio femmina
- Serie metrica



D-E x d	DN	PN	RIF.	CODICE
90-75 x 63	50	16	05 09 691	<b>09030</b>

L	L <sub>1</sub>	Z
51	38	74

\* Distributed product  
\* Prodotto commercializzato

<sup>1</sup> AFNOR  
<sup>2</sup> KIWA  
<sup>3</sup> AENOR

## PVC-U CAPS CALOTTE PVC-U

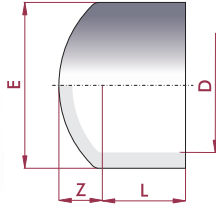
### UP. 07. SF - CALOTTA

#### Cap

- Female solvent socket
- Metric series

#### Calotta

- Incollaggio femmina
- Serie metrica



D	DN	PN	RIF.	CODICE
16	10	16	05 07 016	<b>01942</b>
20	15	16	05 07 020 <sup>2</sup>	<b>01943</b>
25	20	16	05 07 025 <sup>2</sup>	<b>01944</b>
32	25	16	05 07 032 <sup>2</sup>	<b>01945</b>
40	32	16	05 07 040 <sup>2</sup>	<b>01946</b>
50	40	16	05 07 050 <sup>2</sup>	<b>01947</b>
63	50	16	05 07 063 <sup>2</sup>	<b>01948</b>
75	65	16	05 07 075 <sup>2</sup>	<b>01949</b>
90	80	16	05 07 090 <sup>2</sup>	<b>01950</b>
110	100	16	05 07 110	<b>01951</b>
125	110	16	05 07 125	<b>01952</b>
140	125	16	05 07 140	<b>01953</b>
160	150	10	05 07 160	<b>01954</b>
200	175	10	05 07 200	<b>01955</b>
225	200	10	05 07 225	<b>01956</b>
250	225	10	05 07 250	<b>15776</b>
315	300	10	05 07 315	<b>15777</b>

L	Z	E
14	7	22
16	8	25
19	9	32
22	10	40
26	12	50
31	15	63
38	17	75
44	19	90
51	23	110
61	28	131
69	32	148
76	36	163
86	40	185
106	46	224
119	50	252
131	60	282
164	70	357

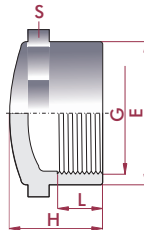
### UP. 07. FT - CALOTTA

#### Cap

- BSP female thread

#### Calotta

- Filetto femmina BSP



G	DN	PN	RIF.	CODICE
3/8"	10	10	10	10
1/2"	15	10	15	10
3/4"	20	10	20	10
1"	25	10	25	10
1 1/4"	32	10	32	10
1 1/2"	40	10	40	10
2"	50	10	50	10
2 1/2"	65	10	65	10
3"	80	10	80	10
4"	100	10	100	10

L	E	H	S
14	24	20	24
14	27	23	27
16	33	28	33
19	41	33	41
20	50	36	50
20	61	43	61
24	75	50	75
44	90	64	90
51	108	76	108
61	135	91	135

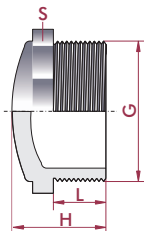
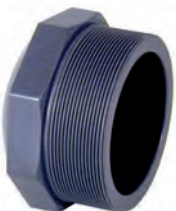
### UP. 19. MT - TAPPO

#### Plug

- BSP male thread

#### Tappo

- Filetto maschio BSP



G	DN	PN	RIF.	CODICE
1/4"	8	10	05 19 612	<b>02121</b>
3/8"	10	10	05 19 616	<b>02122</b>
1/2"	15	10	05 19 620	<b>02123</b>
3/4"	20	10	05 19 625	<b>02124</b>
1"	25	10	05 19 632	<b>02125</b>
1 1/4"	32	10	05 19 640	<b>02126</b>
1 1/2"	40	10	05 19 650	<b>02127</b>
2"	50	10	05 19 663	<b>02128</b>
2 1/2"	65	10	05 19 675	<b>02129</b>
3"	80	10	05 19 690	<b>02130</b>
4"	100	10	05 19 710	<b>02131</b>

L	H	S
10	18	12
10	22	20
14	27	27
16	30	32
19	34	36
21	36	46
21	37	55
26	42	65
30	50	80
33	59	93
38	68	115

<sup>1</sup> AFNOR

<sup>2</sup> KIWA

<sup>3</sup> AENOR

**PVC-U NIPPLES**  
**NIPPLI PVC-U**

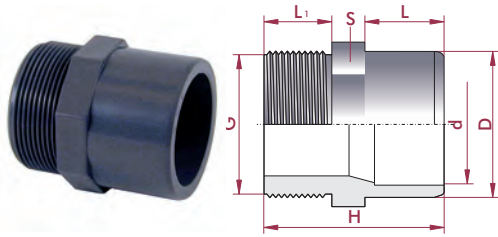
**UP. 15. SFMT - NIPPLO ADATTATORE**

**Adaptor nipple**

- Female solvent socket & BSP male thread
- Metric series

**Manicotto nipplo**

- Incollaggio femmina e filetto maschio BSP
- Serie metrica



D - d x G	DN	PN	RIF.	CODICE
16 - 12 x 3/8"	12	10	05 15 416	<b>02073</b>
20 - 16 x 1/2"	15	10	05 15 420	<b>02074</b>
20 - 16 x 3/4"	12	10	05 15 421	<b>02075</b>
25 - 20 x 3/4"	20	10	05 15 425	<b>02076</b>
25 - 20 x 1/2"	15	10	05 15 426	<b>02077</b>
25 - 20 x 3/8"	12	10	05 15 427	<b>02078</b>
32 - 25 x 1"	25	10	05 15 432	<b>02079</b>
32 - 25 x 3/4"	20	10	05 15 433	<b>02080</b>
32 - 25 x 1/2"	15	10	05 15 434	<b>02081</b>
40 - 32 x 1 1/4"	32	10	05 15 440	<b>02082</b>
40 - 32 x 1"	25	10	05 15 441	<b>02083</b>
40 - 32 x 3/4"	20	10	05 15 442	<b>02084</b>
50 - 40 x 1 1/2"	40	10	05 15 450	<b>02085</b>
50 - 40 x 1 1/4"	32	10	05 15 451	<b>02086</b>
50 - 40 x 1"	25	10	05 15 452	<b>02087</b>
63 - 50 x 2"	50	10	05 15 463	<b>02088</b>
63 - 50 x 1 1/2"	40	10	05 15 464	<b>02089</b>
63 - 50 x 1 1/4"	32	10	05 15 465	<b>02090</b>
75 - 63 x 2 1/2"	65	10	05 15 475	<b>02091</b>
75 - 63 x 2"	50	10	05 15 476	<b>02092</b>
75 - 63 x 1 1/2"	40	10	05 15 477	<b>02093</b>
90 - 75 x 3"	80	10	05 15 490	<b>02094</b>
90 - 75 x 2 1/2"	65	10	05 15 491	<b>02095</b>
90 - 75 x 2"	50	10	05 15 492	<b>02096</b>
110 - 90 x 4"	100	10	05 15 510	<b>02097</b>
110 - 90 x 3"	80	10	05 15 511	<b>02098</b>
110 - 90 x 2 1/2"	65	10	05 15 512	<b>02099</b>

L	L <sub>1</sub>	H	S
14	11	35	24
16	14	42	27
16	11	39	27
19	16	47	32
19	14	45	32
19	11	42	32
22	19	54	36
22	16	51	36
22	14	49	36
26	21	60	46
26	19	58	46
26	16	55	46
31	25	70	55
31	21	66	55
31	19	64	55
38	25	78	65
38	21	73	65
38	21	73	65
44	30	89	78
44	25	84	78
44	21	80	78
51	33	99	93
51	30	96	93
51	25	91	93
61	40	116	120
61	33	109	120
61	30	106	120

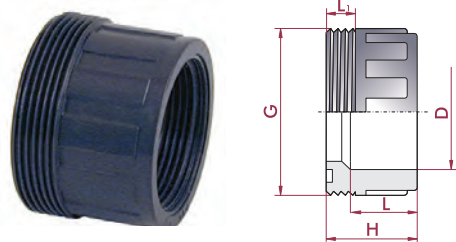
**UP. 16. SFMT - NIPPLO ADATTATORE**

**Adaptor nipple**

- Female solvent socket x BSP male thread
- Metric series

**Nipplo adattatore**

- Incollaggio femmina x filetto maschio BSP
- Serie metrica



D x G	DN	PN	RIF.	CODICE
50 x 2"	40	10	05 16 450	<b>02100</b>
63 x 2 1/2"	50	10	05 16 463	<b>02101</b>

L	L <sub>1</sub>	H
31	16	52
38	17	62

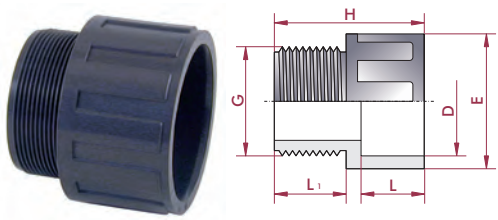
**UP. 17. SFMT - MANICOTTO ADATTATORE**

**Adaptor bush**

- Female solvent socket x BSP male threaded
- Metric series

**Manicotto FM**

- Incollaggio femmina x filetto maschio BSP
- Serie metrica



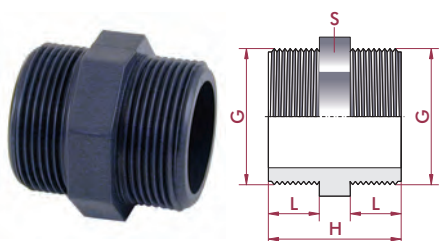
D x G	DN	PN	RIF.	CODICE
20 x 1/2"	15	10	05 17 420	<b>02102</b>
25 x 3/4"	20	10	05 17 425	<b>02103</b>
32 x 1"	25	10	05 17 432	<b>02104</b>
40 x 1 1/4"	32	10	05 17 440	<b>02105</b>
50 x 1 1/2"	40	10	05 17 450	<b>02106</b>
63 x 2"	50	10	05 17 463	<b>02107</b>
75 x 2 1/2"	65	10	05 17 475	<b>02108</b>
90 x 3"	80	10	05 17 490	<b>02109</b>
110 x 4"	100	10	05 17 510	<b>02110</b>

L	L <sub>1</sub>	E	H
16	14	28	38
19	16	34	42
22	19	41	50
26	21	51	55
31	22	62	65
38	27	77	75
44	30	90	85
51	33	108	98
61	40	131	115

**UP. 18. MT** - NIPPLO FILETTATO

**Hexagon nipple**  
• BSP male thread

**Nipplo esagonale**  
• Filetto maschio BSP



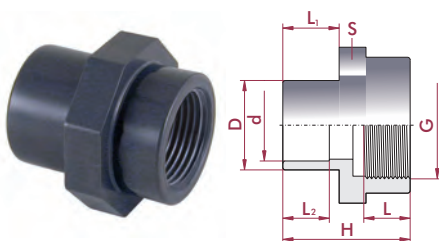
G	DN	PN	RIF.	CODICE
3/8"	10	10	05 18 616	<b>02111</b>
1/2"	15	10	05 18 620	<b>02112</b>
3/4"	20	10	05 18 625	<b>02113</b>
1"	25	10	05 18 632	<b>02114</b>
1 1/4"	32	10	05 18 640	<b>02115</b>
1 1/2"	40	10	05 18 650	<b>02116</b>
2"	50	10	05 18 663	<b>02117</b>
2 1/2"	65	10	05 18 675	<b>02118</b>
3"	80	10	05 18 690	<b>02119</b>
4"	100	10	05 18 710	<b>02120</b>

L	H	S
11	32	20
14	40	27
16	44	32
19	51	36
21	55	46
21	56	55
26	66	65
30	75	90
33	81	108
38	91	135

**UP. 31. SFT** - NIPPLO ADATTATORE

**Adaptor nipple**  
• Female solvent socket & BSP female thread  
• Metric series

**Nipplo adattatore**  
• Incollaggio femmina e filetto femmina BSP  
• Serie metrica



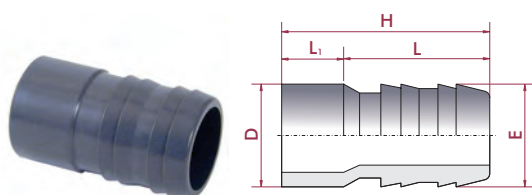
D - d x G	DN	PN	RIF.	CODICE
20 - 16 x 3/4"	16	10	05 31 420	<b>02243</b>
20 - 16 x 1/2"	16	10	05 31 421	<b>02244</b>
20 - 16 x 3/8"	12	10	05 31 422	<b>02245</b>
20 - 16 x 1/4"	12	10	05 31 423	<b>02246</b>
25 - 20 x 1"	20	10	05 31 425	<b>02247</b>
25 - 20 x 3/4"	20	10	05 31 426	<b>02248</b>
25 - 20 x 1/2"	16	10	05 31 427	<b>02249</b>
32 - 25 x 1 1/4"	25	10	05 31 432	<b>02250</b>
32 - 25 x 1"	25	10	05 31 433	<b>02251</b>
32 - 25 x 3/4"	20	10	05 31 434	<b>02252</b>
32 - 25 x 1/2"	16	10	05 31 435	<b>24822</b>
40 - 32 x 1 1/2"	32	10	05 31 440	<b>02253</b>
40 - 32 x 1 1/4"	32	10	05 31 441	<b>02254</b>
40 - 32 x 1"	25	10	05 31 442	<b>02255</b>
50 - 40 x 2"	40	10	05 31 450	<b>02256</b>
50 - 40 x 1 1/2"	40	10	05 31 451	<b>02257</b>
50 - 40 x 1 1/4"	32	10	05 31 452	<b>02258</b>
63 - 50 x 2 1/2"	50	10	05 31 463	<b>02259</b>
63 - 50 x 2"	50	10	05 31 464	<b>02260</b>
63 - 50 x 1 1/2"	40	10	05 31 465	<b>02261</b>
75 - 63 x 3"	50	10	05 31 475	<b>02262</b>
75 - 63 x 2 1/2"	65	10	05 31 476	<b>02263</b>
75 - 63 x 2"	50	10	05 31 477	<b>02264</b>
90 - 75 x 4"	65	10	05 31 490	<b>02265</b>
90 - 75 x 3"	65	10	05 31 491	<b>02266</b>
90 - 75 x 2 1/2"	65	10	05 31 492	<b>02267</b>
110 - 90 x 4"	80	10	05 31 511	<b>02268</b>
110 - 90 x 3"	80	10	05 31 512	<b>02269</b>

L	L <sub>1</sub>	L <sub>2</sub>	H	S
19	16	14	44	32
18	16	14	43	32
14	16	14	39	32
12	16	14	37	32
22	19	16	50	36
19	19	16	47	32
18	19	16	46	32
25	22	19	56	46
22	22	19	53	36
19	22	19	50	36
18	22	19	49	36
25	26	22	60	55
25	26	22	60	46
22	26	22	57	46
29	31	26	69	65
25	31	26	65	55
25	31	26	65	55
34	38	31	81	78
29	38	31	76	65
25	38	31	72	65
37	44	38	96	108
34	44	38	87	78
29	44	38	82	78
42	51	44	124	135
36	51	44	98	108
33	51	44	92	90
42	61	51	116	135
36	61	51	105	110

**UP. 24. SF** - PORTAGOMMA

**Spigot connection**  
• Solvent socket

**Portagomma**  
• Incollaggio



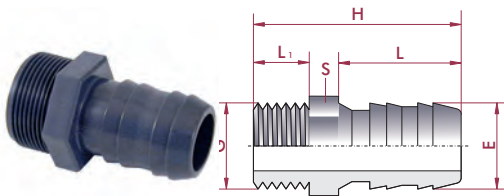
D x E	DN	PN	RIF.	CODICE
16 x 16	10	10	05 24 016	<b>02200</b>
20 x 18	15	10	05 24 018	<b>02201</b>
20 x 20	15	10	05 24 020	<b>02202</b>
25 x 25	20	10	05 24 025	<b>02203</b>
32 x 30	25	10	05 24 032	<b>02204</b>
40 x 40	32	10	05 24 040	<b>02205</b>
50 x 50	40	10	05 24 050	<b>02206</b>
50 x 38	40	10	05 24 051	<b>02207</b>
63 x 60	50	10	05 24 063	<b>02208</b>

H	L <sub>1</sub>	L	E
49	14	35	16
51	16	35	18
54	16	38	20
61	19	42	25
69	22	47	30
78	26	52	40
88	31	57	50
88	31	57	38
98	38	60	61

## UP. 24. MT - PORTAGOMMA

**Spigot connection**  
• BSP male thread

**Portagomma filetto**  
• Filetto maschio BSP



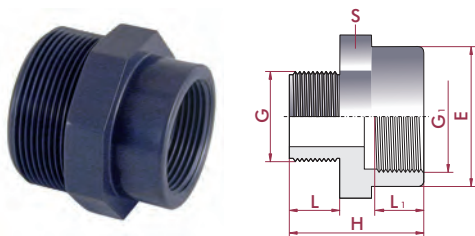
G x E	DN	PN	RIF.	CODICE
3/8" x 16	10	10	05 24 616	<b>02217</b>
1/2" x 18	15	10	05 24 618	<b>02218</b>
1/2" x 20	15	10	05 24 620	<b>02219</b>
3/4" x 25	20	10	05 24 625	<b>02220</b>
3/4" x 20	20	10	05 24 626	<b>15763</b>
1" x 30	25	10	05 24 632	<b>02221</b>
1" x 25	25	10	05 24 633	<b>09031</b>
1 1/4" x 40	32	10	05 24 640	<b>02222</b>
1 1/2" x 50	40	10	05 24 650	<b>02223</b>
1 1/2" x 38	40	10	05 24 651	<b>02224</b>
1 1/2" x 40	40	10	05 24 652	<b>09032</b>
2" x 60	50	10	05 24 663	<b>02225</b>

H	L <sub>1</sub>	S	L	E
54	11	35	18	16
58	15	35	22	18
60	15	38	22	20
67	17	42	27	25
62	17	36	27	20
78	21	47	36	30
78	21	47	36	25
84	22	52	46	40
89	22	57	50	50
89	22	57	50	38
89	22	57	50	40
100	26	60	65	61

## UP. 32. MFT - RIDUZIONE FILETTATA

**Threaded reducer**  
• BSP male x female thread

**Riduzione filettata**  
• Filetto maschio x femmina BSP



G x G <sub>1</sub>	DN	PN	RIF.	CODICE
3/8" x 1/2"	10	10	05 32 616	<b>02270</b>
1/2" x 3/4"	15	10	05 32 620	<b>02271</b>
1/2" x 3/8"	10	10	05 32 621	<b>02272</b>
3/4" x 1"	20	10	05 32 625	<b>02273</b>
3/4" x 1/2"	15	10	05 32 626	<b>02274</b>
3/4" x 3/8"	10	10	05 32 627	<b>02275</b>
1" x 1 1/4"	25	10	05 32 632	<b>02276</b>
1" x 3/4"	20	10	05 32 633	<b>02277</b>
1" x 1/2"	15	10	05 32 634	<b>02278</b>
1" x 3/8"	10	10	05 32 635	<b>02279</b>
1 1/4" x 1 1/2"	32	10	05 32 640	<b>02280</b>
1 1/4" x 1"	25	10	05 32 641	<b>02281</b>
1 1/4" x 3/4"	20	10	05 32 642	<b>02282</b>
1 1/4" x 1/2"	15	10	05 32 643	<b>02283</b>
1 1/2" x 2"	40	10	05 32 650	<b>02284</b>
1 1/2" x 1 1/4"	32	10	05 32 651	<b>02285</b>
1 1/2" x 1"	25	10	05 32 652	<b>02286</b>
1 1/2" x 3/4"	20	10	05 32 653	<b>02287</b>
2" x 2 1/2"	50	10	05 32 663	<b>02288</b>
2" x 1 1/2"	40	10	05 32 664	<b>02289</b>
2" x 1 1/4"	32	10	05 32 665	<b>02290</b>
2" x 1"	25	10	05 32 666	<b>02291</b>
2 1/2" x 3"	65	10	05 32 675	<b>02292</b>
2 1/2" x 2"	50	10	05 32 676	<b>02293</b>
2 1/2" x 1 1/2"	40	10	05 32 677	<b>02294</b>
2 1/2" x 1 1/4"	32	10	05 32 678	<b>02295</b>
3" x 4"	80	10	05 32 690	<b>02296</b>
3" x 2 1/2"	63	10	05 32 691	<b>02297</b>
3" x 2"	50	10	05 32 692	<b>02298</b>
3" x 1 1/2"	40	10	05 32 693	<b>02299</b>
4" x 3"	80	10	05 32 711	<b>02300</b>
4" x 2 1/2"	65	10	05 32 712	<b>23001</b>
4" x 2"	50	10	05 32 713	<b>23002</b>

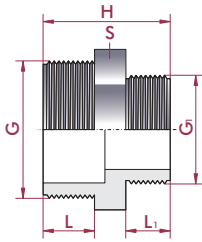
L	L <sub>1</sub>	H	E	S
11	18	42	28	27
15	19	49	35	33
15	14	38	22	22
16	22	46	41	41
16	18	43	28	32
16	14	39	22	33
19	25	53	50	50
19	19	48	33	36
19	18	47	28	36
19	14	43	22	36
21	25	54	61	61
21	25	52	41	46
21	22	50	33	46
21	18	49	28	46
21	29	60	75	75
21	25	55	50	55
21	22	53	41	55
21	19	51	33	55
25	34	68	90	90
25	25	59	61	65
25	25	59	50	65
25	22	57	41	65
30	37	99	108	108
30	29	68	75	80
30	25	64	61	80
30	25	64	50	80
33	43	115	135	135
33	34	75	90	93
33	29	70	75	93
33	25	66	61	93
39	37	91	108	115
39	34	93	90	115
39	29	100	75	115

**UP. 33. MT - RIDUZIONE FILETTATA**
**Threaded reducer**

• BSP male x male thread

**Nipplo ridotto**

• Filetto maschio x maschio BSP



G x G <sub>1</sub>	DN	PN	RIF.	CODICE
1/2" x 3/8"	10	10	05 33 620	<b>02303</b>
3/4" x 1/2"	15	10	05 33 625	<b>02304</b>
3/4" x 3/8"	10	10	05 33 626	<b>02305</b>
1" x 3/4"	20	10	05 33 632	<b>02306</b>
1" x 1/2"	15	10	05 33 633	<b>02307</b>
1" x 3/8"	10	10	05 33 634	<b>02308</b>
1 1/4" x 1"	25	10	05 33 640	<b>02309</b>
1 1/4" x 3/4"	20	10	05 33 641	<b>02310</b>
1 1/4" x 1/2"	15	10	05 33 642	<b>02311</b>
1 1/2" x 1 1/4"	32	10	05 33 650	<b>02312</b>
1 1/2" x 1"	25	10	05 33 651	<b>02313</b>
1 1/2" x 3/4"	20	10	05 33 652	<b>02314</b>
2" x 1 1/2"	40	10	05 33 663	<b>02315</b>
2" x 1 1/4"	32	10	05 33 664	<b>02316</b>
2" x 1"	25	10	05 33 665	<b>02317</b>
2 1/2" x 2"	50	10	05 33 675	<b>02318</b>
2 1/2" x 1 1/2"	40	10	05 33 676	<b>02319</b>
2 1/2" x 1 1/4"	32	10	05 33 677	<b>02320</b>
3" x 2 1/2"	65	10	05 33 690	<b>02321</b>
3" x 2"	50	10	05 33 691	<b>02322</b>
3" x 1 1/2"	40	10	05 33 692	<b>02323</b>
4" x 3"	80	10	05 33 710	<b>02324</b>
4" x 2 1/2"	65	10	05 33 711	<b>02325</b>
4" x 2"	50	10	05 33 712	<b>02326</b>

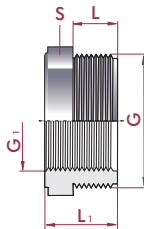
L	L <sub>1</sub>	H	S
15	11	36	24
16	15	43	32
16	11	39	32
19	16	48	40
19	15	47	40
19	11	43	40
21	19	53	50
21	16	50	50
21	15	49	50
21	21	56	55
21	19	54	55
21	16	51	55
25	21	61	65
25	21	61	65
25	19	58	65
30	25	70	80
30	21	66	80
30	21	66	80
33	30	78	93
33	25	73	93
33	21	69	93
38	33	86	115
38	30	83	115
38	25	78	115

**UP. 34. MFT - RIDUZIONE FILETTATA CORTA**
**Short threaded reducer**

• BSP male x female thread

**Riduzione filettata corta**

• Filetto maschio x femmina BSP



G x G <sub>1</sub>	DN	PN	RIF.	CODICE
1/2" x 1/4"	7	10	05 34 621	<b>23087</b>
3/4" x 1/2"	15	10	05 34 625	<b>20147</b>
3/4" x 1/4"	7	10	05 34 627	<b>23088</b>
3/4" x 1/8"	3	10	05 34 628	<b>28081</b>
1" x 3/4"	20	10	05 34 632	<b>20148</b>
1" x 1/4"	7	10	05 34 635	<b>23089</b>
1 1/4" x 1"	25	10	05 34 640	<b>20149</b>
1 1/2" x 1 1/4"	32	10	05 34 650	<b>20150</b>
2" x 1 1/2"	40	10	05 34 663	<b>20151</b>
2 1/2" x 2"	50	10	05 34 675	<b>20152</b>
3" x 2 1/2"	63	10	05 34 690	<b>20153</b>
4" x 3"	75	10	05 34 710	<b>20154</b>

L	L <sub>1</sub>	S
14	12	27
16	30	32
16	12	32
16	34	32
19	34	36
12	19	36
21	36	46
21	36	55
26	42	65
30	47	80
33	51	93
39	64	120

## PVC-U RUBBER-RING JOINT FITTINGS

### ACCESSORI IN PVC-U CON GUARNIZIONE ELASTICA

#### FEATURES

Easy installation fittings, without effort or tools, thanks to its gaskets.

It is compulsory the use of an inner gasket to install it.

Designed to support earth movements or misalignments, ideally suited for underground installations.

It can absorb vibrations or pipe expansions due to its elasticity and flexibility.

To make the installation easier, it is very important to lubricate the gasket correctly.

- Material: PVC-U.
- Density: 1,4 g/cm<sup>3</sup>.
- Color: grey RAL 7011.
- Dimensions: from D63 to D315.
- Standards: dimensions and characteristics according to EN 1452.

#### CARATTERISTICHE

Accessori facili da installare, senza sforzo e senza utensili grazie alle guarnizioni.

Per una corretta installazione è necessaria la guarnizione interna. Sono studiati per potere sopportare movimenti della terra e smottamenti ideali per installazioni interrato.

Grazie alla loro elasticità e flessibilità, assorbono maggiormente le vibrazioni e le dilatazioni del tubo.

E' molto importante una buona lubrificazione della guarnizione per potere installare il tubo comodamente.

- Materiali: PVC-U.
- Densità: 1,4 g/cm<sup>3</sup>.
- Colore: grigio Ral 7011.
- Dimensioni: da D63 a D315.
- Norme: dimensioni e caratteristiche secondo la norma EN 1452.

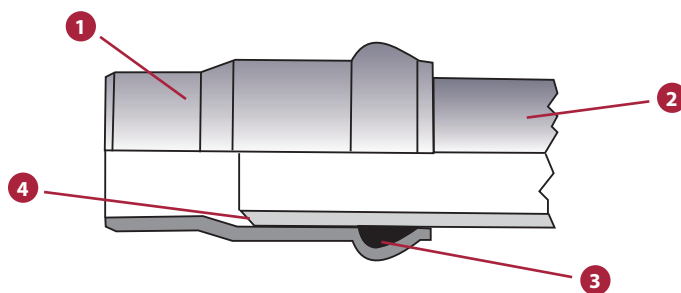


FIG.	Parts	Parti	Materiale
1	Union socket	Manicotto	PVC-U
2	Pipe	Tubo	-
3	Gasket	Guarnizione	NBR
4	Chamfer to make an easier installation	Smussare per installare più facilmente	-

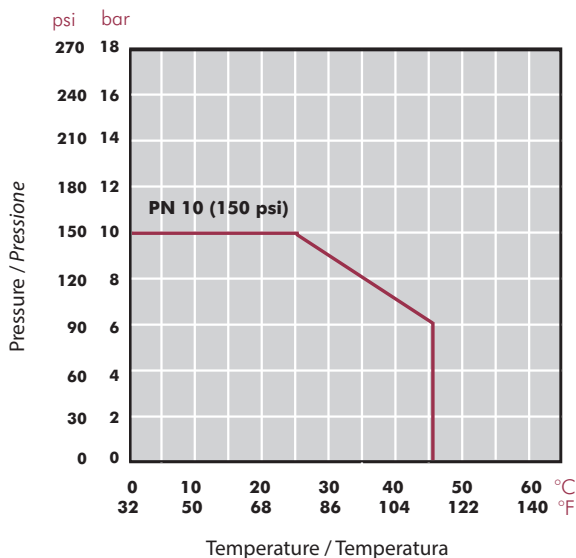
**TECHNICAL CHARACTERISTICS**

Working pressure at 20°C (73°F) water temperature:  
 • D63 - D315: PN 10 (150 psi)

**CARATTERISTICHE TECNICHE**

Pressione di servizio 20°C (73°F) temperatura dell'acqua:  
 • D63 - D315: PN 10 (150 psi)

**PRESSURE / TEMPERATURE GRAPH  
 DIAGRAMMA PRESSIONE / TEMPERATURA**



Life: 20 years  
 Hydrostatic maximum pressure a component may withstand in continuous service (without overpressure)

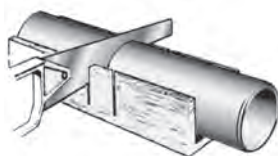
*Vita utile: 20 anni*  
*Pressione idrostatica massima considerando la capacità massima di sopportazione in servizio continuo (senza sovrappressione)*

**ASSEMBLY**

**A.** Before assembling rubber ring fittings proceed as follows. In case of pipe end damaged: cut the pipe with a proper tool to obtain a square end.

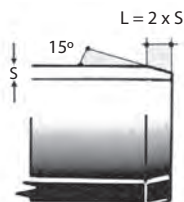
**MONTAGGIO**

**A.** Prima di installare gli accessori con guarnizione elastica, si proceda nel seguente modo. In caso che l'estremità del tubo sia danneggiata: tagliare il tubo con utensili adeguati per ottenere un taglio perpendicolare all'asse.



**B.** Chamfer the pipe with a special tool as shown in the following picture and table.

**B.** Smussare il tubo con utensili adeguati come mostrato nella figura e nel quadro seguente.



D (mm)	63	75	90	110	125	140	160	200
L (mm)	6,0	7,0	9,0	10,5	12,0	13,5	15,5	19,0

**C.** Clean carefully the external surface of the pipe and lubricate only with soapy water (do not use oil or grease).

**C.** Pulire attentamente la superficie esterne del tubo. Lubrificare solamente con acqua insaponata (non utilizzare oli o grassi).



**D.** Clean carefully the socket seat in the fitting. Check gasket conditions. Introduce the sealing ring into its specific seat.

**D.** Pulire attentamente la sede della guarnizione nel raccordo. Verificare lo stato della guarnizione. Introdurre la guarnizione nella sede specifica.



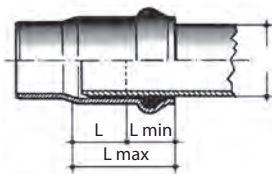
**E.** Lubricate the internal surface of the rubber ring in the same way as the pipe.

**E.** Lubrificare la superficie interna della guarnizione con lubrificante adeguato nello stesso modo del tubo.



**F.** Mark on the outside of the pipe the depth to be inserted into the socket of the fitting according to the lengths in the following table.

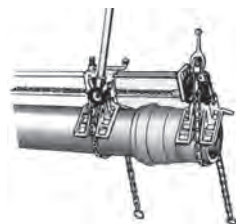
**F.** Segnare all'esterno del tubo la profondità di inserimento nel raccordo secondo le lunghezze riportate nel quadro.



D (mm)	63	75	90	110	125	140	160	200
L max	94	104	109	115	124	133	139	169
L min	42	45	50	55	60	69	75	85
L	52	59	59	60	64	64	64	64

**G.** To introduce the tube into the fitting we recommend to use the appliance device shown in picture.  
 - Fix the special assembling device onto the pipe.  
 - Fix the fitting upon the device.  
 - With the lever, slide the fitting onto the pipe till you reach the reference mark.

**G.** Per introdurre il tubo nel raccordo si consiglia l'impiego di una imbragatura come mostrato ne riquadro.  
 - Fissare un dispositivo di assemblaggio adeguato sopra il tubo.  
 - Fissare il raccordo sopra il dispositivo di fissaggio.  
 - Con le leve far scorrere il raccordo sul tubo fino al raggiungimento del segno di riferimento.



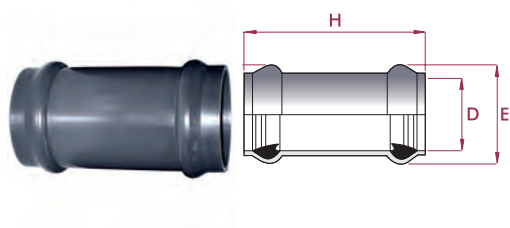
## UP. 05. RJ - UNION SOCKET

### Union socket

- Rubber ring joint
- Metric series

### Manicotto

- Con guarnizione elastica
- Serie metrica



D	DN	PN	RIF.	CODICE
63	50	10	70 05 063 *	<b>22917</b>
75	65	10	70 05 075 *	<b>22918</b>
90	80	10	70 05 090 *	<b>22919</b>
110	100	10	70 05 110 *	<b>22920</b>
125	110	10	70 05 125 *	<b>22921</b>
140	125	10	70 05 140 *	<b>22922</b>
160	150	10	70 05 160 *	<b>22923</b>
200	175	10	70 05 200 *	<b>22924</b>
225	200	10	70 05 225 *	<b>22925</b>
250	225	10	70 05 250 *	<b>22926</b>
315	300	10	70 05 315 *	<b>22927</b>

E	H
86	380
102	380
120	380
144	380
161	380
178	380
202	380
248	400
277	500
304	500
382	500

\* Distributed product

\* Prodotto commercializzato

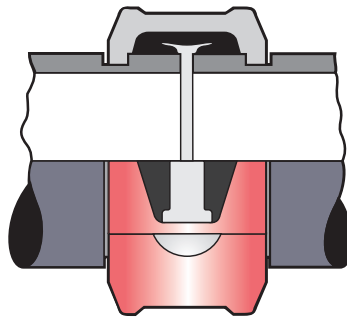
## VICTAULIC® COUPLING CONNESSIONE VICTAULIC®

Designed with a heavy housing for high pressure service. The housing key is wider than standard and the coupling housing is designed to clamp the bottom of the groove, thus providing an essentially rigid joint. It also eliminates movement at the joint.

Reduces linear or angular movement and is useful for valve connections and other points where rigidity is required.

Progettato per resistere alle elevate pressioni. La chiave di tenuta è più larga di quella standard e l'unione è pensata per l'accoppiamento nella scanalatura, assicurando un accoppiamento rigido. E' inoltre pensato per eliminare i movimenti nell'unione.

Riduce lo spostamento lineare o angolare e può essere impiegato per connessioni con valvole o in altri punti dove venga richiesta un'unione rigida.



- Fast assembly.
- Allows misalignments up to 1°30'.
- EPDM joint.
- Coupling made of coated ductile iron.
- Bolts made of zinc plated carbon steel.

- Montaggio rapido.
- Permette disallineamenti fino a 1°30'
- Guarnizione in EPDM
- Giunto in acciaio verniciato
- Viteria in acciaio zincato

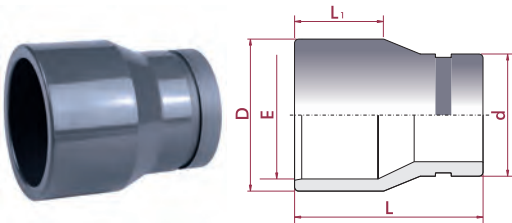
### UP. 58. SFVT - RACCORDO VICTAULIC

**Victaulic® grooved flexible socket**

- Female solvent socket
- Metric series

**Raccordo flessibile scanalato Victaulic®**

- Incollaggio femmina
- Serie metrica



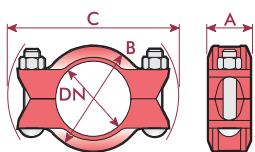
D - E x d	DN	PN	RIF.	CODICE
75 - 63 x 2"	2"	16	05 58 463	<b>20162</b>
110 - 90 x 3"	3"	16	05 58 490	<b>20163</b>
125 - 110 x 4"	4"	16	05 58 510	<b>20164</b>
180 - 160 x 6"	6"	10	05 58 560	<b>21444</b>

L	L <sub>1</sub>
93	44
132	63
151	71
183	90

### UP. 58. VT - GIUNTO VICTAULIC

**Victaulic® grooved flexible coupling**

**Giunto flessibile scanalato Victaulic®**



DN	RIF.	CODICE
2"	05 58 063*	<b>20165</b>
3"	05 58 090*	<b>20166</b>
4"	05 58 110*	<b>20167</b>
6"	05 58 160*	<b>21445</b>

A	B	C
51	89	168
51	121	197
54	152	245
64	219	321

\* Distributed product  
\* Prodotto commercializzato

## PVC-U LOOSE FLANGES FLANGIA LIBERA PVC-U

- EN 1452 / ISO 15493 / ISO EN 558 / BS EN 1092-1 Flange System.
- We recommend to follow flange installation instructions carefully to avoid any unnecessary tensions.

- Sistema di flange EN 1452 / ISO 15493 / ISO EN 558 / BS EN 1092-1.
- Raccomandiamo di seguire esattamente le norme di montaggio delle flange al fine di evitare tensioni eccessive.

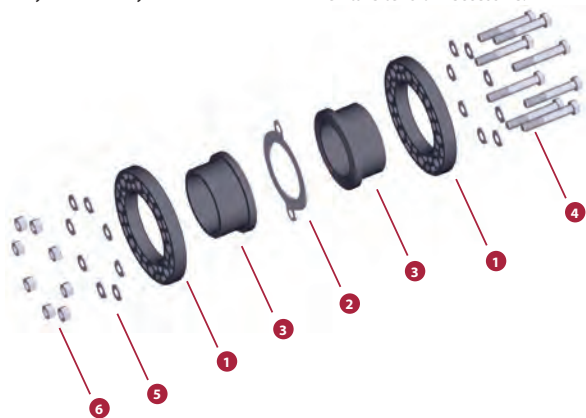
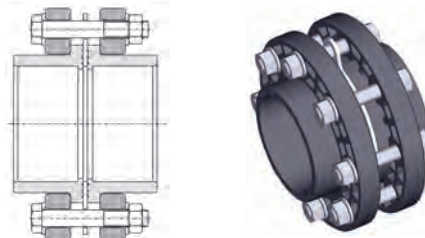


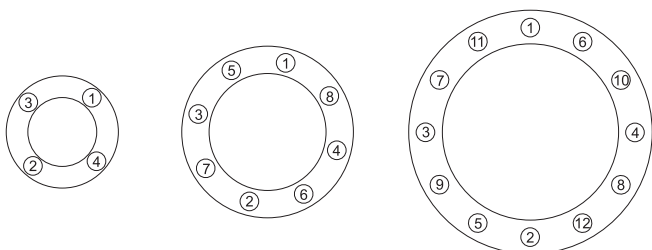
FIG.	Parts	Parti	Material
1	Flange	Flangia	PVC-U / PP
2	Flat gasket	Guarnizione	EVA / EPDM
3	Flange adaptor **	Collare **	PVC-U
4	Screw DIN 931	Vite DIN 931	Acciaio zincato 5.6 / Acciaio inox A2 *
5	Washer DIN 125-A	Dado DIN 125-A	
6	Nut DIN 934	Rondelle DIN 934	

D	2		1		3
	EVA	EPDM	PVC-U	PP	PVC-U
20	✓	✓	✓		✓
25	✓	✓	✓		✓
32	✓	✓	✓		✓
40	✓	✓	✓		✓
50	✓	✓	✓	✓	✓
63	✓	✓	✓	✓	✓
75	✓	✓	✓	✓	✓
90	✓	✓	✓	✓	✓
110	✓	✓	✓	✓	✓
125	✓	✓	✓	✓	✓
140	✓	✓	✓	✓	✓
160	✓	✓	✓	✓	✓
200	✓	✓	✓	✓	✓
225	✓	✓	✓	✓	✓
250	✓	✓	✓	✓	✓
315	✓	✓	✓	✓	✓
400		✓	✓	✓	✓
500		✓	✓	✓	✓

\* On order A4 Stainless steel  
In ordine acciaio inox. A4

\*\* Flange adaptor available in BS and ASTM solvent socket standards  
Collare disponibile in BS e ASTM

## TIGHTENING SEQUENCE ORDINE DI SERRAGGIO



## TIGHTENING MAXIMUM TORQUE COPPIA MASSIMA DI SERRAGGIO

D	DN	inch	N · m	Kgf · cm	inch · lbs
<b>63-75</b>	65	2 ½"	25	255	221
<b>90</b>	80	3"	25	255	221
<b>110</b>	100	4"	30	306	265
<b>125-140</b>	125	5"	35	257	310
<b>160</b>	150	6"	40	408	354
<b>200-225</b>	200	8"	50	510	442
<b>250-280</b>	250	10"	80	816	708
<b>315</b>	300	12"	80	816	708

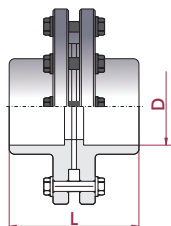
## UP. 52. RA - SET FLANGE

### Flange set (kit)

- Loose flange
- Female solvent socket
- Metric series

### Set unione con flange (kit)

- Flangia libera
- Incollaggio femmina
- Serie metrica



D	DN	PN	RIF. (EVA)	CODICE (EVA)	RIF. (EPDM)	CODICE (EPDM)	L
20	15	16	05 52 020 RA	<b>66996</b>	05 52 020 RA EPDM	<b>67071</b>	
25	20	16	05 52 025 RA	<b>66997</b>	05 52 025 RA EPDM	<b>67072</b>	
32	25	16	05 52 032 RA	<b>66998</b>	05 52 032 RA EPDM	<b>67073</b>	
40	32	16	05 52 040 RA	<b>66999</b>	05 52 040 RA EPDM	<b>67074</b>	
50	40	16	05 52 050 RA	<b>67000</b>	05 52 050 RA EPDM	<b>67075</b>	
63	50	16	05 52 063 RA	<b>67037</b>	05 52 063 RA EPDM	<b>67076</b>	
75	65	16	05 52 075 RA	<b>67059</b>	05 52 075 RA EPDM	<b>67077</b>	97
90	80	16	05 52 090 RA	<b>67064</b>	05 52 090 RA EPDM	<b>67078</b>	115
110	100	16	05 52 110 RA	<b>67065</b>	05 52 110 RA EPDM	<b>67079</b>	136
125	125	16	05 52 125 RA	<b>67070</b>	05 52 125 RA EPDM	<b>67080</b>	152
140	125	16	05 52 140 RA	<b>67066</b>	05 52 140 RA EPDM	<b>67081</b>	166
160	150	10	05 52 160 RA	<b>67067</b>	05 52 160 RA EPDM	<b>67082</b>	186
200	150	10	05 52 200 RA	<b>67068</b>	05 52 200 RA EPDM	<b>67083</b>	227
225	200	10	05 52 225 RA	<b>67069</b>	05 52 225 RA EPDM	<b>67084</b>	255
250	250	10	05 52 250 RA	<b>66955</b>	05 52 250 RA EPDM	<b>66973</b>	
315	300	10	05 52 315 RA	<b>66956</b>	05 52 315 RA EPDM	<b>66974</b>	
400	400	6	-	-	05 52 400 RA EPDM	<b>66957</b>	
500	500	4	-	-	05 52 500 RA EPDM	<b>66958</b>	

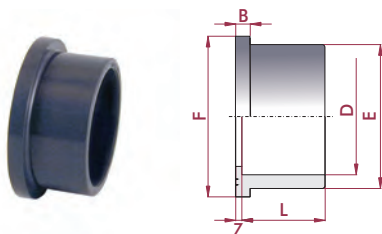
## UP. 10. SF - COLLARE

### PVC-U flange adaptor (sub flange)

- Female solvent socket
- Metric series

### Collare PVC-U (sotto flangia)

- Incollaggio femmina
- Serie metrica



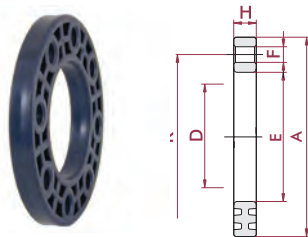
D	DN	PN	RIF.	CODICE
20	15	16	05 10 020 <sup>3</sup>	<b>07692</b>
25	20	16	05 10 025 <sup>3</sup>	<b>07693</b>
32	25	16	05 10 032 <sup>3</sup>	<b>07694</b>
40	32	16	05 10 040 <sup>3</sup>	<b>07695</b>
50	40	16	05 10 050 <sup>3</sup>	<b>02020</b>
63	50	16	05 10 063 <sup>3</sup>	<b>02021</b>
75	65	16	05 10 075 <sup>3</sup>	<b>02022</b>
90	80	16	05 10 090 <sup>3</sup>	<b>02023</b>
110	100	16	05 10 110 <sup>3</sup>	<b>02024</b>
125	110	16	05 10 125 <sup>3</sup>	<b>02025</b>
140	125	16	05 10 140 <sup>3</sup>	<b>02026</b>
160	150	10	05 10 160 <sup>3</sup>	<b>02027</b>
200	175	10	05 10 200	<b>02028</b>
225	200	10	05 10 225	<b>02029</b>
250	225	10	05 10 250	<b>02030</b>
315	300	10	05 10 315	<b>02031</b>
400	375	6	05 10 400*	<b>05341</b>
500	480	4	05 10 402*	<b>05342</b>

L	Z	B	E	F
16	3	6	27	34
19	3	7	33	41
22	3	7	41	50
26	3	8	50	61
31	3	8	61	73
38	3	9	76	90
44	3	10	90	106
51	5	11	108	125
61	5	12	131	150
69	5	13	148	168
76	5	14	165	188
86	5	16	188	213
106	6	20	225	247
119	6	25	248	274
131	8	27	282	328
164	8	30	342	378
206	12	30	432	483
153	8	24	532	574

## UP. 11. FLG - FLANGIA

### PVC-U loose flange

### Flangia libera PVC-U



D	DN	PN	RIF.	CODICE
20	15	16	05 11 020	<b>07696</b>
25	20	16	05 11 025	<b>07697</b>
32	25	16	05 11 032	<b>07698</b>
40	32	16	05 11 040	<b>07699</b>
50	40	16	05 11 050	<b>02032</b>
63	50	16	05 11 063	<b>02033</b>
75	65	16	05 11 075	<b>02034</b>
90	80	16	05 11 090	<b>02035</b>
110	100	16	05 11 110	<b>02036</b>
125	110	16	05 11 125	<b>02037</b>
140	125	16	05 11 140	<b>02038</b>
125 <sup>5</sup>		16	05 11 141 <sup>3</sup>	<b>02039</b>
160	150	10	05 11 160	<b>02040</b>
200	10	10	05 11 200	<b>02041</b>
225	200	10	05 11 225	<b>02042</b>
200 <sup>5</sup>		10	05 11 226 <sup>3</sup>	<b>09039</b>
250		10	05 11 250	<b>02043</b>
315	300	10	05 11 315	<b>02044</b>
400	400	6	05 11 400*	<b>05343</b>
500	500	4	05 11 402*	<b>05344</b>

E	A	H	K	F
28	95	12	65	14 x 4
34	105	13	75	14 x 4
42	115	15	85	14 x 4
51	140	16	100	18 x 4
62	150	17	110	18 x 4
78	165	18	125	18 x 4
92	185	22	145	18 x 4
110	200	23	160	18 x 8
133	220	24	180	18 x 8
150	230	26	190	18 x 8
167	250	28	210	18 x 8
150	250	28	210	18 x 8
190	285	31	240	22 x 8
226	340	32	295	22 x 8
250	340	32	295	22 x 8
226	340	32	295	22 x 8
277	370	34	325	22 x 12
348	445	36	400	22 x 12
442	565	34	515	26 x 16
533	657	30	600	26 x 20

<sup>4</sup> Hole distance corresponding to DN125 flange

<sup>5</sup> Hole distance corresponding to DN200 flange

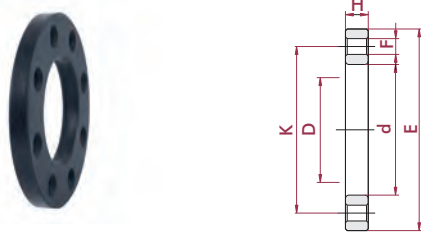
<sup>4</sup> Distanza tra i fori corrispondente alla flangia DN125

<sup>5</sup> Distanza tra i fori corrispondente alla flangia DN200

## PP. 12. FLG - FLANGIA PP

### PP flange (backing ring)

### Flangia PP (anello di rinforzo)



D	DN	PN	RIF.	CODICE
50	40	16	05 12 050	<b>02045</b>
63	50	16	05 12 063	<b>02046</b>
75	65	16	05 12 075	<b>02047</b>
90	80	16	05 12 090	<b>02048</b>
110	100	16	05 12 110	<b>02049</b>
125		16	05 12 125	<b>02050</b>
140	125	16	05 12 140	<b>02051</b>
125 <sup>4</sup>		16	05 12 141 <sup>3</sup>	<b>02052</b>
160	150	10	05 12 160	<b>02053</b>
200		10	05 12 200	<b>02054</b>
225	200	10	05 12 225	<b>02055</b>
200 <sup>5</sup>		10	05 12 226 <sup>3</sup>	<b>02056</b>

E	H	A	K	F
62	18	150	110	18 x 4
78	19	165	125	18 x 4
92	20	185	145	18 x 4
110	22	200	160	18 x 8
133	24	220	180	18 x 8
149	26	230	190	18 x 8
167	28	250	210	18 x 8
149	28	250	210	18 x 8
190	30	285	240	22 x 8
227	32	315	270	22 x 8
250	34	340	295	22 x 8
227	34	340	295	22 x 8

<sup>4</sup> Hole distance corresponding to DN125 flange

<sup>5</sup> Hole distance corresponding to DN200 flange

<sup>4</sup> Distanza tra i fori corrispondente alla flangia DN125

<sup>5</sup> Distanza tra i fori corrispondente alla flangia DN200

At the time to make the relationship between adaptor and flange, for the compatibility it prevails the D size of the corresponding pipe.  
Nella compatibilità del rapporto adattatore-flangia, prevale la misura D del tubo corrispondente.

\* Distributed product

\* Prodotto commercializzato

## PVC-U FIX FLANGES FLANGIA FISSA PVC-U

- EN 1452 / ISO 15493 Flange System.
- We recommend to follow flange installation instructions carefully to avoid any unnecessary tensions.

- Sistema di flange EN 1452 / ISO 15493 .
- Raccomandiamo di seguire esattamente le norme di montaggio delle flange al fine di evitare tensioni eccessive.

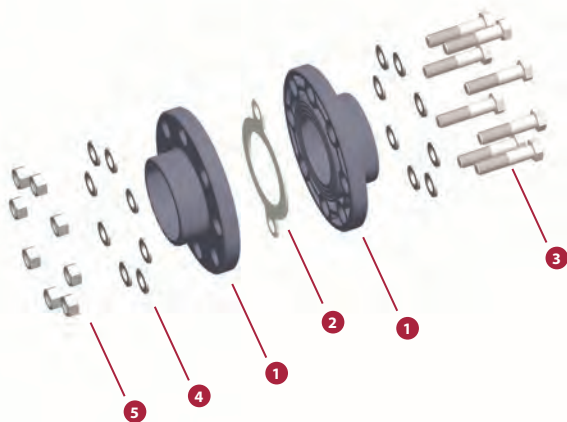
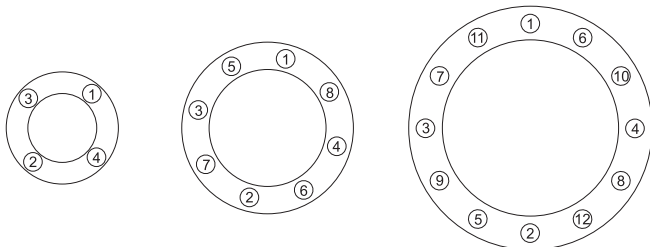


FIG.	Parts	Parti	Material
1	Flange	Flangia	PVC-U / PP
2	Flat gasket	Guarnizione	EVA / EPDM
3	Screw DIN 931	Vite DIN 931	Acciaio zincato 5.6 / Acciaio inox A2 *
4	Washer DIN 125-A	Dado DIN 125-A	
5	Nut DIN 934	Rondelle DIN 934	

\* On order A4 Stainless steel  
In ordine acciaio inox. A4

### TIGHTENING SEQUENCE ORDINE DI SERRAGGIO



### TIGHTENING MAXIMUM TORQUE COPPIA MASSIMA DI SERRAGGIO

D	DN	inch	N · m	Kgf · cm	inch · lbs
<b>63-75</b>	65	2 ½"	25	255	221
<b>90</b>	80	3"	25	255	221
<b>110</b>	100	4"	30	306	265
<b>125-140</b>	125	5"	35	257	310
<b>160</b>	150	6"	40	408	354
<b>200-225</b>	200	8"	50	510	442
<b>250-280</b>	250	10"	80	816	708
<b>315</b>	300	12"	80	816	708

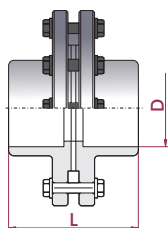
## UP. 52. SF - SET FLANGE

### Flange set (kit)

- Fix flange
- Female solvent socket
- Metric series

### Set unione con flange (kit)

- Flangia fissa
- Incollaggio femmina
- Serie metrica



D	DN	PN	RIF. (EVA)	CODICE (EVA)	RIF. (EPDM)	CODICE (EPDM)	L
20	15	16	05 52 020	<b>66949</b>	05 52 020 EPDM	<b>66959</b>	
25	20	16	05 52 025	<b>66950</b>	05 52 025 EPDM	<b>66960</b>	
32	25	16	05 52 032	<b>66951</b>	05 52 032 EPDM	<b>66961</b>	
40	32	16	05 52 040	<b>66952</b>	05 52 040 EPDM	<b>66962</b>	
50	40	16	05 52 050	<b>66953</b>	05 52 050 EPDM	<b>66963</b>	
63	50	16	05 52 063	<b>66954</b>	05 52 063 EPDM	<b>66964</b>	
75	65	16	05 52 075	<b>02371</b>	05 52 075 EPDM	<b>66965</b>	97
90	80	16	05 52 090	<b>02372</b>	05 52 090 EPDM	<b>66966</b>	115
110	100	16	05 52 110	<b>02373</b>	05 52 110 EPDM	<b>66967</b>	136
125	110	16	05 52 125	<b>02374</b>	05 52 125 EPDM	<b>66968</b>	152
140	125	16	05 52 140	<b>02375</b>	05 52 140 EPDM	<b>66969</b>	166
160	150	10	05 52 160	<b>02376</b>	05 52 160 EPDM	<b>66970</b>	186
200	175	10	05 52 200	<b>02377</b>	05 52 200 EPDM	<b>66971</b>	227
225	200	10	05 52 225	<b>02378</b>	05 52 225 EPDM	<b>66972</b>	255

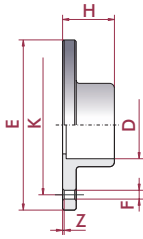
## UP. 25. FLG - TESTA E ANELLO DI RINFORZO

### PVC-U fix flange (stub & backing ring)

- Female solvent socket
- Metric series

### Flangia fissa PVC-U

- Incollaggio femmina
- Serie metrica



<sup>4</sup> Hole distance corresponding to DN125 flange

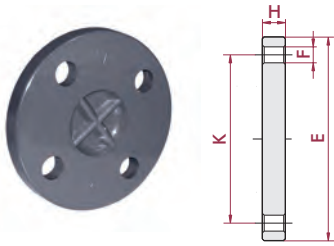
<sup>4</sup> Distanza tra i fori corrispondente alla flangia DN125

D	DN	PN	RIF.	CODICE
20	15	16	05 25 020 *	<b>22575</b>
25	20	16	05 25 025 *	<b>22576</b>
32	25	16	05 25 032 *	<b>22577</b>
40	32	16	05 25 040 *	<b>22578</b>
50	40	16	05 25 050 *	<b>22579</b>
63	50	16	05 25 063 *	<b>22580</b>
75	65	16	05 25 075	<b>02226</b>
90	80	16	05 25 090	<b>02227</b>
110	100	16	05 25 110	<b>02228</b>
125		16	05 25 125	<b>02229</b>
125 <sup>4</sup>		16	05 25 126 <sup>3</sup>	<b>02234</b>
140	125	16	05 25 140	<b>02230</b>
160	150	10	05 25 160	<b>02231</b>
200		10	05 25 200	<b>02232</b>
225	200	10	05 25 225	<b>02233</b>

H	Z	A	K	F
20	4	95	65	14 x 4
23	4	105	75	14 x 4
26	4	115	85	14 x 4
30	4	142	100	18 x 4
35	4	152	110	18 x 4
42	4	165	125	18 x 4
47	3	185	145	18 x 4
56	5	200	160	18 x 8
66	5	220	180	18 x 8
74	5	230	190	18 x 8
74	5	250	210	18 x 8
81	5	250	210	18 x 8
91	5	285	240	22 x 8
112	6	315	270	22 x 8
125	6	340	295	22 x 8

\* Distributed product

\* Prodotto commercializzato

**UP. 37. FLG - FLANGIA CIECA**
**PVC-U blind flange**
**Flangia cieca PVC-U**

<sup>5</sup> Hole distance corresponding to DN200 flange

<sup>5</sup> Distanza tra i fori corrispondente alla flangia DN200

D	DN	PN	RIF.	CODICE
20	15	16	05 37 020 *	<b>22561</b>
25	20	16	05 37 025 *	<b>22562</b>
32	25	16	05 37 032 *	<b>22563</b>
40	32	16	05 37 040 *	<b>22564</b>
50	40	16	05 37 050 *	<b>22565</b>
63	50	16	05 37 063 *	<b>22566</b>
75	65	16	05 37 075 *	<b>22567</b>
90	80	16	05 37 090 *	<b>22568</b>
110	100	16	05 37 110 *	<b>22569</b>
125	16		05 37 125 *	<b>22570</b>
140	125	16	05 37 140 *	<b>22571</b>
160	150	10	05 37 160 *	<b>22572</b>
200 <sup>6</sup>		10	05 37 200 <sup>3</sup> *	<b>22573</b>
225	200	10	05 37 225 *	<b>22574</b>

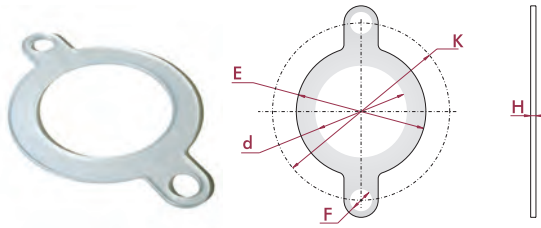
H	A	K	F
11	95	65	14 x 4
12	105	75	14 x 4
14	115	85	14 x 4
15	142	100	18 x 4
16	152	110	18 x 4
18	165	125	18 x 4
19	185	145	18 x 4
20	200	160	18 x 8
22	220	180	18 x 8
24	230	190	18 x 8
26	250	210	18 x 8
28	285	240	22 x 8
30	340	295	22 x 8
30	340	295	22 x 8

**EVA. 14 - FLANGIA PIATTA**
**EVA flat gasket**

• Metric series

**Guarnizione EVA**

• Serie metrica



D	DN	RIF.	CODE
20	15	05 14 020 *	<b>07700</b>
25	20	05 14 025 *	<b>07701</b>
32	25	05 14 032 *	<b>07702</b>
40	32	05 14 040 *	<b>07703</b>
50	40	05 14 050 *	<b>02061</b>
63	50	05 14 063 *	<b>02062</b>
75	65	05 14 075 *	<b>02063</b>
90	80	05 14 090 *	<b>02064</b>
110	100	05 14 110 *	<b>02065</b>
125		05 14 125 *	<b>02066</b>
140	125	05 14 140 *	<b>02067</b>
160	150	05 14 160 *	<b>02068</b>
200		05 14 200 *	<b>02069</b>
225	200	05 14 225 *	<b>02070</b>
250		05 14 250 *	<b>02071</b>
315	300	05 14 315 *	<b>02072</b>

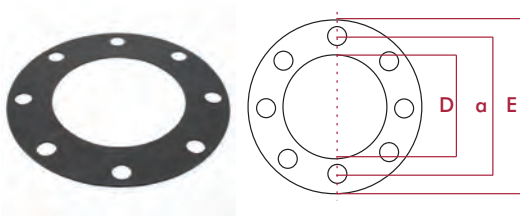
d	E	H	K	F
20	32	2	65	14
25	39	2	75	14
32	48	2	85	14
40	59	2	100	18
50	71	3	110	18
63	88	3	125	18
75	104	3	145	18
90	123	3	160	18
110	148	4	180	18
125	166	4	190	18
140	186	4	210	18
160	211	4	240	22
200	245	5	270	22
225	275	5	295	22
250	328	3	350	22
315	378	3	400	22

**PDM. 14 - FLANGIA PIATTA**
**EPDM flat gasket**

• Metric series

**Guarnizione EPDM**

• Serie metrica



D	DN	RIF.	CODE
20	15	05 14 020 EPDM *	<b>66933</b>
25	20	05 14 025 EPDM *	<b>66934</b>
32	25	05 14 032 EPDM *	<b>66935</b>
40	32	05 14 040 EPDM *	<b>66936</b>
50	40	05 14 050 EPDM *	<b>66937</b>
63	50	05 14 063 EPDM *	<b>66938</b>
75	65	05 14 075 EPDM *	<b>66939</b>
90	80	05 14 090 EPDM *	<b>66340</b>
110	100	05 14 110 EPDM *	<b>66941</b>
125		05 14 125 EPDM *	<b>66942</b>
140	125	05 14 140 EPDM *	<b>66943</b>
160	150	05 14 160 EPDM *	<b>66944</b>
200		05 14 200 EPDM *	<b>66945</b>
225	200	05 14 225 EPDM *	<b>66946</b>
250		05 14 250 EPDM *	<b>66947</b>
315	300	05 14 315 EPDM *	<b>66948</b>
400	353	05 14 400 EPDM *	<b>05345</b>
500	475	05 14 402 EPDM *	<b>05346</b>

H	E	a	F
2,5	93	34	16 x 4
2,5	103	41	19 x 4
2,5	115	50	22 x 4
2,5	140	100	20 x 4
2,5	150	110	20 x 4
2,5	165	125	20 x 4
2,5	185	145	20 x 4
2,5	200	160	20 x 8
2,5	220	180	20 x 8
2,5	245	210	20 x 8
2,5	250	210	20 x 8
2,5	285	240	22 x 8
2,5	335	295	22 x 8
2,5	340	295	22 x 8
2,5	395	350	22 x 12
2,5	440	400	22 x 12
2,5	565	515	22 x 16
2,5	660	620	25 x 20


\* Distributed product

\* Prodotto commercializzato

## BOLTS VITERIA

Required bolt size depending on each application of the flange:  
butterfly valve, coupling or swing check valve.

Modello e diametro delle viti necessario per ciascuna applicazione flangiata:  
Valvola a farfalla, unione flangiata, visore per liquidi o valvola a clapet.



Flange set (loose flange)  
*Unione con flange (Flangia libera)*


Industrial ball valve with loose flanges  
*Valvola a sfera Industrial Flangia libera*

DIMENSIONE FLANGIA	DIMENSIONE VITE	UNITÀ	CODICE Acciaio zincato 5.6	CODICE Acciaio inox A2
D20, D25	M12 x 60	4	16061	60515
D32	M12 x 60	4	16061	60515
D40	M16 x 70	4	16061	60515
D50	M16 x 70	4	02437	60516
D63	M16 x 70	4	02437	60516
D75	M16 x 80	4	02438	60517
D90	M16 x 90	8	02439	60518
D110	M16 x 90	8	02439	60518
D125	M16 x 100	8	66775	66783
D140	M16 x 100	8	66775	66783
D160	M16 x 110	8	66776	66784
D200	M20 x 120	8	66777	66785
D225	M20 x 130	8	66778	66786
D250	M20 x 140	12	66779	66787
D280	M20 x 150	12	66780	66788
D315	M20 x 160	12	02448	60535
D400	M24 x 160	12	66782	66790
D500	M24 x 140	12	66781	66789




Flange set (fix flange)  
*Unione con flange (flangia fissa)*

DIMENSIONE FLANGIA	DIMENSIONE VITE	UNITÀ	CODICE Acciaio zincato 5.6	CODICE Acciaio inox A2
D20, D25	M 12 x 60	4	16061	60515
D32	M 12 x 60	4	16061	60515
D40	M 16 x 70	4	02437	60516
D50	M 16 x 70	4	02437	60516
D63	M 16 x 70	4	02437	60516
D75	M 16 x 70	4	02437	60516
D90	M 16 x 70	8	02437	60516
D110	M 16 x 80	8	02438	60517
D125	M 16 x 80	8	02438	60517
D140	M 16 x 90	8	02439	60518
D160	M 20 x 90	8	02446	60533
D200	M 20 x 110	8	02447	60534
D225	M 20 x 110	8	02447	60534




Butterfly valve (loose flange)  
*Valvola a farfalla (flangia libera)*

DIMENSIONE FLANGIA	DIMENSIONE VITE	UNITÀ	CODICE Acciaio zincato 5.6	CODICE Acciaio inox A2
D63	M 16 x 120	4	02440	60519
D75	M 16 x 140	4	02442	60526
D90	M 16 x 150	8	02443	60527
D110	M 16 x 160	8	02444	60528
D125	M 16 x 170	8	02445	60529
D140	M 16 x 170	8	02445	60529
D160	M 20 x 200	8	20263	60538
D200	M 20 x 210	8	02451	60539
D225	M 20 x 230	8	02452	60547
D250	M 20 x 270	12	07721	60548
D280	M 20 x 270	12	07721	60548
D315	M 20 x 310	12	07722	60549



Butterfly valve (fix flange)  
*Valvola a farfalla (flangia fissa)*

DIMENSIONE FLANGIA	DIMENSIONE VITE	UNITÀ	CODICE Acciaio zincato 5.6	CODICE Acciaio inox A2
D63	M 16 x 120	4	02440	60519
D75	M 16 x 120	4	02440	60519
D90	M 16 x 130	8	02441	60525
D110	M 16 x 130	8	02441	60625
D125	M 16 x 140	8	02442	60526
D140	M 16 x 150	8	02443	60527
D160	M 20 x 160	8	02448	60535
D200	M 20 x 180	8	02449	60536
D225	M 20 x 190	8	02450	60537



Swing check valve (loose flange)  
*Valvola a clapet (flangia libera)*

DIMENSIONE FLANGIA	DIMENSIONE VITE	UNITÀ	CODICE Acciaio zincato 5.6	CODICE Acciaio inox A2
D75	M 16 x 120	4	02440	60519
D90	M 16 x 120	8	02440	60519
D110	M 16 x 120	8	02440	60519
D125	M 16 x 130	8	02441	60525
D140	M 16 x 130	8	02441	60525
D160	M 20 x 160	8	02448	60535
D200	M 20 x 160	8	02448	60535
D225	M 20 x 180	8	02449	60536
D250	M 20 x 210	12	02451	60539
D315	M 20 x 230	12	02452	60547

\* Valid for Industrial, Standard and Classic Series

\* Valido per la Serie Industrial, Standard e Classic

## PVC-U UNIONS BOCCHETTONI PVC-U

Unions are the preferred choice over flange adaptors for the connection of plastic pipes. With no metal parts, there is no corrosion and the weight is also reduced.

They are only available in small sizes (up until D110).

The union ends are manufactured in plain ends for solvent socket or thread always according the sizing standards, doing this system appropriate to adapt to other elements or systems. Cepex unions feature an o-ring in order to ensure better unions, so it is no needed the use of PTFE tape between nut and union end (it is only needed in the threaded ends).

They are not recommended when connected to pipe under bending stress.

The union nut should be tightened by hand. Must use a strap wrench for big sizes (D75, D90, D110).

With this type of unions, it is possible to mix several plastic materials.

Qualora ci sia necessità di unire due plastici, questi sono da preferirsi rispetto alle flange, poiché non contengono nessuna parte di metallo e il diametro esterno è più ridotto.

Purtroppo, sono disponibili solo per diametri piccoli (fino a D110). I manicotti di collegamento sono realizzati con estremità lisce di incollaggio o filettate, sempre in conformità con le norme standard, rendendo possibile l'adattamento ad altri componenti (anche se di diverso materiale).

I collegamenti 3 pezzi Cepex prevedono una guarnizione per garantire stabilità tra i due manicotti dell'unione perciò, non si deve utilizzare nessun nastro in PTFE tra dato e manicotto (utilizzare nastro in PTFE solo nelle estremità di manicotto filettato).

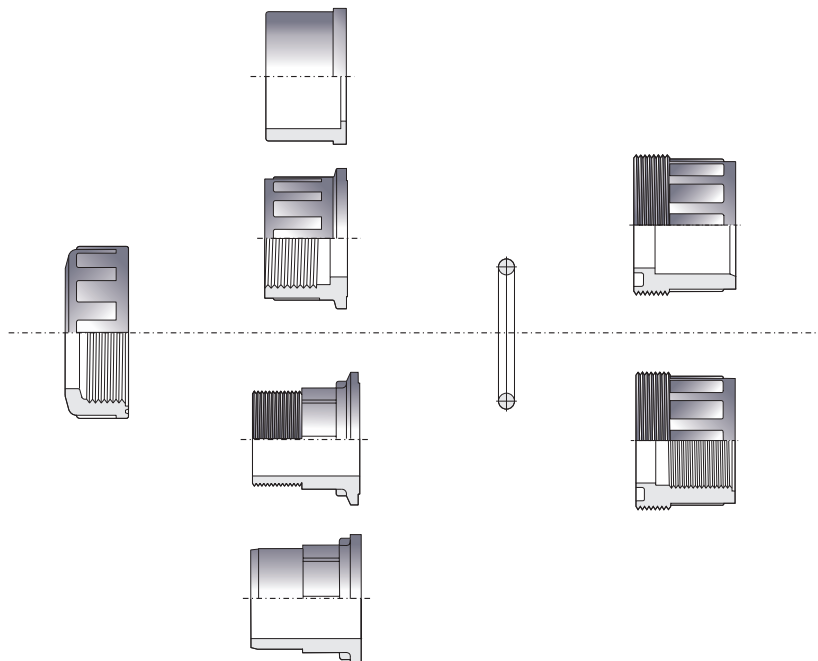
Non sono consigliati qualora il tubo sia soggetto a forza di flessione (dovuta a eventuali disallineamenti).

Non è necessario l'uso di nessuno strumento, si avvita con le mani. Utilizzare un nastro in presenza di diametri grandi (D75, D90, D110).

Grazie a questi collegamenti, si possono unire varie tipologie di plastici.



## CONNECTION POSSIBILITIES POSSIBILITÀ DI CONNESSIONE



### Available standards

Solvent socket: metric, BS, ASTM  
Threaded: BSP, NPT

### Standards disponibile

Incollaggio: metrico, BS, ASTM  
Filetto: BSP, NPT

Ask for other types of unions or other materials (PP, PE100...)  
Richiedere altri tipi di bocchettioni o altri materiali (PP, PE100...)

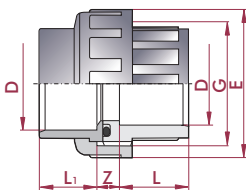
### UP. 50. SF - BOCCHETTONE

**Union**

- Female solvent socket
- Metric series
- EPDM o-ring

**Bocchettone**

- Incollaggio femmina
- Serie metrica
- O-ring in EPDM



D	DN	PN	RIF.	CODICE
16	12	16	05 50 016	<b>20157</b>
20	15	16	05 50 020	<b>02327</b>
25	20	16	05 50 025	<b>02328</b>
32	25	16	05 50 032	<b>02329</b>
40	32	16	05 50 040	<b>02330</b>
50	40	16	05 50 050	<b>02331</b>
63	50	16	05 50 063	<b>02332</b>
75	65	10	05 50 075	<b>02333</b>
90	80	10	05 50 090	<b>02334</b>
110	100	10	05 50 110	<b>02335</b>

L	L <sub>1</sub>	Z	G	E	o-ring
14	14	13	¾"	34	15,5 x 2,6
16	16	13	1"	41	20,2 x 3,5
19	19	13	1¼"	52	28,2 x 3,5
22	22	13	1½"	60	32,9 x 3,5
26	26	15	2"	74	40,6 x 5,3
31	31	17	2¼"	80	47,0 x 5,3
38	38	21	2¾"	99	59,7 x 5,3
44	44	21	3½"	120	75,6 x 5,3
51	51	24	4"	138	91,4 x 5,3
61	61	26	5½"	179	110,5x5,3

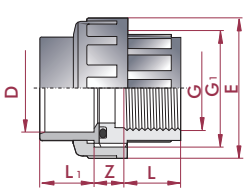
### UP. 50. SFT - BOCCHETTONE MISTO

**Union adaptor**

- Female solvent socket x BSP female thread
- Metric series
- EPDM o-ring

**Bocchettone misto**

- Incollaggio femmina x filetto femmina BSP
- Serie metrica
- O-ring in EPDM



D x G	DN	PN	RIF.	CODE
16 x ¾"	12	10	05 50 416	<b>20158</b>
20 x ½"	15	10	05 50 420	<b>02336</b>
25 x ¾"	20	10	05 50 425	<b>02337</b>
32 x 1"	25	10	05 50 432	<b>02338</b>
40 x 1¼"	32	10	05 50 440	<b>02339</b>
50 x 1½"	40	10	05 50 450	<b>02340</b>
63 x 2"	50	10	05 50 463	<b>02341</b>
75 x 2½"	65	10	05 50 475	<b>02342</b>
90 x 3"	80	10	05 50 490	<b>02343</b>
110 x 4"	100	10	05 50 510	<b>02344</b>

L	L <sub>1</sub>	Z	G <sub>1</sub>	E	o-ring
14	14	13	¾"	34	15,5 x 2,6
16	16	13	1"	41	20,2 x 3,5
19	19	13	1¼"	52	28,2 x 3,5
22	22	13	1½"	60	32,9 x 3,5
26	26	15	2"	74	40,6 x 5,3
31	31	17	2¼"	80	47,0 x 5,3
38	38	21	2¾"	99	59,7 x 5,3
44	44	21	3½"	120	75,6 x 5,3
51	51	24	4"	138	91,4 x 5,3
61	61	26	5½"	179	110,5x5,3

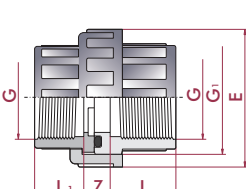
### UP. 50. FT - BOCCHETTONE

**Union**

- BSP female thread
- EPDM o-ring

**Bocchettone**

- Filetto femmina BSP
- O-ring in EPDM



G	DN	PN	RIF.	CODICE
¾"	12	10	05 50 616	<b>20159</b>
½"	15	10	05 50 620	<b>02345</b>
¾"	20	10	05 50 625	<b>02346</b>
1"	25	10	05 50 632	<b>02347</b>
1¼"	32	10	05 50 640	<b>02348</b>
1½"	40	10	05 50 650	<b>02349</b>
2"	50	10	05 50 663	<b>02350</b>
2½"	65	10	05 50 675	<b>07713</b>
3"	80	10	05 50 690	<b>07714</b>
4"	100	10	05 50 710	<b>07715</b>

L	L <sub>1</sub>	Z	G <sub>1</sub>	E	o-ring
14	12	13	¾"	34	15,5 x 2,6
16	15	12	1"	41	20,2 x 3,5
19	17	12	1¼"	52	28,2 x 3,5
22	20	14	1½"	60	32,9 x 3,5
26	24	16	2"	74	40,6 x 5,3
31	25	18	2¼"	80	47,0 x 5,3
38	29	20	2¾"	99	59,7 x 5,3
44	34	21	3½"	120	75,6 x 5,3
51	37	24	4"	138	91,4 x 5,3
61	42	26	5½"	179	110,5x5,3

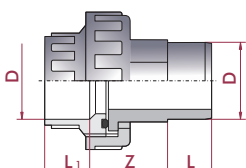
### UP. 51. SMF - BOCCHETTONE

**Union**

- Male x female solvent socket
- Metric series
- EPDM o-ring

**Bocchettone**

- Incollaggio maschio x femmina
- Serie metrica
- O-ring in EPDM



D	DN	PN	RIF.	CODICE
50	40	10	05 51 050	<b>02351</b>
63	50	10	05 51 063	<b>02352</b>

L	L <sub>1</sub>	Z
31	31	48
38	38	62

FPM o-rings available upon request.  
O-ring in FPM disponibili su richiesta.

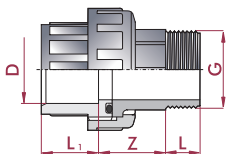
## UP. 51. SMT - BOCCHETTONE MISTO

**Union adaptor**

- Female solvent socket x BSP male thread
- Metric series
- EPDM o-ring

**Bocchettone misto**

- Incollaggio femmina x filetto maschio BSP
- Serie metrica
- O-ring in EPDM



D x G	DN	PN	RIF.	CODICE
16 x 3/8"	12	10	05 51 416	<b>20160</b>
20 x 1/2"	15	10	05 51 420	<b>02353</b>
25 x 3/4"	20	10	05 51 425	<b>02354</b>
32 x 1"	25	10	05 51 432	<b>02355</b>
40 x 1 1/4"	32	10	05 51 440	<b>02356</b>
50 x 1 1/2"	40	10	05 51 450	<b>02357</b>
63 x 2"	50	10	05 51 463	<b>02358</b>
75 x 2 1/2"	65	10	05 51 475	<b>02359</b>
90 x 3"	80	10	05 51 490	<b>02360</b>
110 x 4"	100	10	05 51 510	<b>02361</b>

L <sub>1</sub>	L	Z
14	12	29
16	15	33
19	16	35
22	19	40
26	21	40
31	21	48
38	28	62
44	30	70
51	33	62
61	40	70

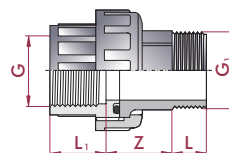
## UP. 51. MFT - BOCCHETTONE

**Union**

- BSP female x male thread
- EPDM o-ring

**Bocchettone**

- Filetto femmina x maschio BSP
- O-ring in EPDM



G x G <sub>1</sub>	DN	PN	RIF.	CODICE
3/8" x 3/8"	12	10	05 51 616	<b>20161</b>
1/2" x 1/2"	15	10	05 51 620	<b>02362</b>
3/4" x 3/4"	20	10	05 51 625	<b>02363</b>
1" x 1"	25	10	05 51 632	<b>02364</b>
1 1/4" x 1 1/4"	32	10	05 51 640	<b>02365</b>
1 1/2" x 1 1/2"	40	10	05 51 650	<b>02366</b>
2" x 2"	50	10	05 51 663	<b>02367</b>
2 1/2" x 2 1/2"	65	10	05 51 675	<b>02368</b>
3" x 3"	80	10	05 51 690	<b>02369</b>
4" x 4"	100	10	05 51 710	<b>02370</b>

L <sub>1</sub>	L	Z
14	12	30
16	15	33
19	16	35
22	19	40
26	21	40
31	21	48
38	28	62
44	30	70
51	33	62
61	40	70

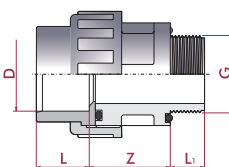
## UP. 51. SMT2 - BOCCHETTONE MISTO

**Union adaptor**

- Female solvent socket x BSP male thread
- Metric series
- EPDM o-ring

**Bocchettone misto**

- Incollaggio femmina x filetto maschio BSP
- Serie metrica
- O-ring in EPDM



D x G	DN	PN	RIF.	CODICE
50 x 1 1/2"	40	10	05 51 250	<b>07716</b>
50 x 2"	40	10	05 51 251	<b>26638</b>
63 x 2"	50	10	05 51 263	<b>07717</b>

L	L <sub>1</sub>	Z
31	21	49
31	28	46
38	28	51

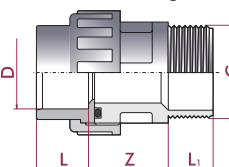
## UP. 51. SFMT - BOCCHETTONE

**Union adaptor**

- Female solvent socket x BSP male thread
- Metric series
- EPDM o-ring

**Bocchettone misto**

- Incollaggio femmina x filetto maschio BSP
- Serie metrica
- O-ring in EPDM



D x G	DN	PN	RIF.	CODICE
50 x 2"	40	10	05 51 451	<b>09033</b>

L	L <sub>1</sub>	Z
31	28	49

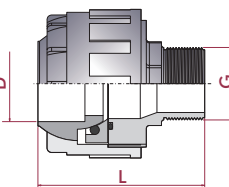
## UP. 57. SFMT - MANICOTTO ORIENTABILE

**Self-align union**

- Max. misalignment ±4°
- Female solvent socket x BSP male thread
- Metric series

**Manicotto orientabile**

- Disassamento max. ±4°
- Incollaggio femmina x filetto maschio BSP
- Serie metrica



D x G	DN	PN	RIF.	CODICE
50 x 1 1/2"	40	10	05 57 550	<b>18874</b>

L
110

## FITTINGS FOR UNIONS ACCESSORI PER BOCCHETTONI

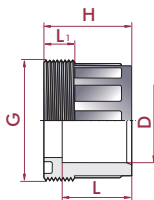
### UP. 21. SFMT - PEZZO FOLLE MISTO

**Adaptor union bush**

- Female solvent socket x BSP male thread
- Metric series

**Pezzo folle misto**

- Incollaggio femmina x filetto maschio BSP
- Serie metrica



D x G	DN	PN	RIF.	CODICE
20 x 1"	15	10	05 21 420	<b>02148</b>
25 x 1 1/4"	20	10	05 21 425	<b>02150</b>
32 x 1 1/2"	25	10	05 21 432	<b>02151</b>
40 x 2"	32	10	05 21 440	<b>02153</b>
50 x 2 1/4"	40	10	05 21 450	<b>02154</b>
63 x 2 3/4"	50	10	05 21 463	<b>02156</b>
75 x 3 1/2"	65	10	05 21 475	<b>02157</b>
90 x 4"	80	10	05 21 490	<b>02158</b>
110 x 5 1/2"	100	10	05 21 510	<b>02159</b>

L	L <sub>1</sub>	H
16	10	26
19	11	29
22	12	32
28	15	39
31	16	46
38	18	56
44	18	62
51	18	69
61	31	79

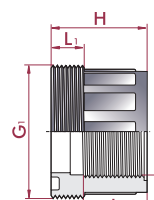
### UP. 21. MFT - PEZZO FOLLE

**Union bush**

- BSP male x female thread

**Pezzo folle**

- Filetto maschio x femmina BSP



G <sub>1</sub> x G	DN	PN	RIF.	CODICE
1" x 1/2"	15	10	05 21 620	<b>02160</b>
1 1/4" x 3/4"	20	10	05 21 625	<b>02162</b>
1 1/2" x 1"	25	10	05 21 632	<b>02163</b>
2" x 1 1/4"	32	10	05 21 640	<b>02165</b>
2 1/4" x 1 1/2"	40	10	05 21 650	<b>02166</b>
2 3/4" x 2"	50	10	05 21 663	<b>02168</b>
3 1/2" x 2 1/2"	65	10	05 21 675	<b>02169</b>
4" x 3"	80	10	05 21 690	<b>02170</b>
5 1/2" x 4"	100	10	05 21 710	<b>02171</b>

L	L <sub>1</sub>	H
16	10	26
19	11	29
22	12	32
30	15	39
31	16	46
38	18	56
44	18	62
51	18	69
61	31	79

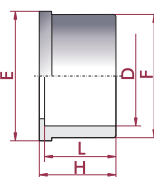
### UP. 22. SF - PEZZO FOLLE

**Union end**

- Female solvent socket
- Metric series

**Pezzo folle**

- Incollaggio femmina
- Serie metrica



D	DN	PN	RIF.	CODICE
16	10	16	05 22 016	<b>20229</b>
20	15	16	05 22 020	<b>02172</b>
25	20	16	05 22 025	<b>02173</b>
32	25	16	05 22 032	<b>02174</b>
40	32	16	05 22 040	<b>02175</b>
50	40	16	05 22 050	<b>02176</b>
63	50	16	05 22 063	<b>02177</b>
75	65	16	05 22 075	<b>02178</b>
90	80	16	05 22 090	<b>02179</b>
110	100	16	05 22 110	<b>02180</b>

L	E	H	F
14	24	17	22
16	30	19	27
19	39	22	36
22	45	25	41
26	56	29	53
31	63	34	59
38	78	41	74
44	97	47	92
51	110	56	105
61	147	66	131

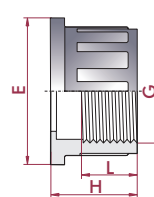
### UP. 22. FT - PEZZO FOLLE

**Union end**

- BSP female thread
- Metric series

**Pezzo folle**

- Filetto femmina
- Serie metrica



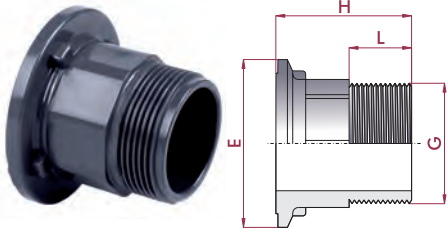
G	DN	PN	RIF.	CODICE
3/8"	10	10	05 22 616	<b>20230</b>
1/2"	15	10	05 22 620	<b>16310</b>
3/4"	20	10	05 22 625	<b>16311</b>
1"	25	10	05 22 632	<b>16312</b>
1 1/4"	32	10	05 22 640	<b>16313</b>
1 1/2"	40	10	05 22 650	<b>16314</b>
2"	50	10	05 22 663	<b>16315</b>
2 1/2"	65	10	05 22 675	<b>16316</b>
3"	80	10	05 22 690	<b>16317</b>
4"	100	10	05 22 710	<b>16318</b>

L	H	E
12	17	24
15	21	30
17	23	39
20	26	45
24	30	56
25	35	63
29	42	78
34	48	97
37	57	110
42	69	146

**UP. 22. MT - PEZZO FOLLE**

**Union end**  
• BSP male thread

**Pezzo folle**  
• Filetto maschio BSP



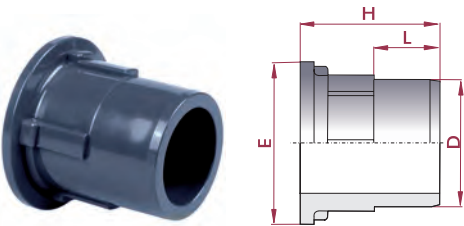
G	PN	RIF.	CODICE
3/8"	10	05 22 416	<b>25959</b>
1/2"	10	05 22 420	<b>25960</b>
3/4"	10	05 22 425	<b>25961</b>
1"	10	05 22 432	<b>25962</b>
1 1/4"	10	05 22 440	<b>25963</b>
1 1/2"	10	05 22 450	<b>25964</b>
2"	10	05 22 463	<b>25965</b>
2 1/2"	10	05 22 475	<b>25966</b>
3"	10	05 22 490	<b>25967</b>
4"	10	05 22 510	<b>25968</b>

L	H	E
12	33	24
15	38	30
16	41	39
19	48	45
21	50	57
21	57	63
28	70	78
30	72	97
33	77	110
40	98	147

**UP. 22. SM - PEZZO FOLLE**

**Union end**  
• Male solvent socket  
• Metric series

**Pezzo folle**  
• Incollaggio maschio  
• Serie metrica



D	PN	RIF.	CODICE
50	16	05 22 250	<b>25957</b>
63	16	05 22 263	<b>25958</b>

L	H	E
31	66	63
38	80	78

**UP. 23. FT - GHIERA**

**Union nut**  
• BSP female thread

**Ghiera**  
• Filetto femmina BSP



G	PN	RIF.	CODICE
3/4" (3/4")	10	05 23 625	<b>02187</b>
1" (1/2")	10	05 23 632	<b>02188</b>
1 1/4" (3/4")	10	05 23 640	<b>02189</b>
41,5	10	05 23 641	<b>02190</b>
1 1/2" (1")	10	05 23 650	<b>02191</b>
2" (1 1/4")	10	05 23 663	<b>02192</b>
2 1/4" (1 1/2")	10	05 23 664	<b>02193</b>
2"	10	05 23 665	<b>02194</b>
2 1/2"	10	05 23 675	<b>02195</b>
2 3/4" (2")	10	05 23 676	<b>02196</b>
3 1/2" (2 1/2")	10	05 23 692	<b>02197</b>
4" (3")	10	05 23 710	<b>02198</b>
5 1/2" (4")	10	05 23 741	<b>02199</b>

L	H	E	D	Di
15	20	36	22	24
15	20	41	27	30
16	22	52	36	39
12	18	53	33	39
20	26	60	41	45
21	26	74	53	57
22	30	80	59	63
19	28	70	46	54
18	27	90	64	72
28	36	99	74	78
28	36	120	92	97
28	38	133	105	110
41	56	177	131	148

The size of the corresponding union is indicated in brackets.

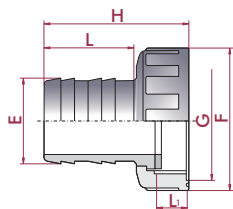
Tra parentesi si riporta la dimensione dell'unione bocchettonata corrispondente.

## PVC-U SPIGOTS CONNESSIONI PORTAGOMMA

### UP. 55. SPI - BOCCHETTONE PORTAGOMMA

Spigot and nut union

Portagomma con ghiera



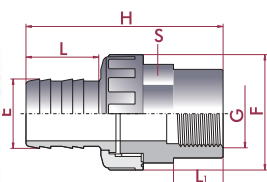
E x G	RIF.	CODICE
16 x 3/4"	05 55 016	<b>02399</b>
18 x 3/4"	05 55 018	<b>02400</b>
20 x 3/4"	05 55 020	<b>02401</b>
25 x 1"	05 55 025	<b>02402</b>
20 x 1"	05 55 026	<b>15764</b>
30 x 1 1/4"	05 55 032	<b>02403</b>
40 x 1 1/2"	05 55 040	<b>02404</b>
50 x 2"	05 55 050	<b>02405</b>
38 x 2"	05 55 051	<b>02406</b>
60 x 2 1/2"	05 55 063	<b>02407</b>

H	F	L	L <sub>1</sub>
46	36	35	10
46	36	35	10
49	36	38	10
56	41	42	10
51	41	36	10
66	52	47	10
73	60	52	14
82	74	57	14
82	74	57	14
88	90	60	18

### UP. 55. SPIFT - BOCCHETTONE PORTAGOMMA

Spigot union female threaded

Bocchettone portagomma filetto femmina



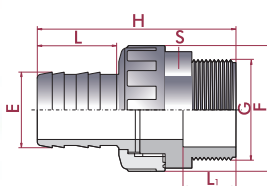
E x G	RIF.	CODICE
16 x 3/8"	05 55 416	<b>02408</b>
18 x 1/2"	05 55 418	<b>02409</b>
20 x 1/2"	05 55 420	<b>02410</b>
25 x 3/4"	05 55 425	<b>02411</b>
30 x 1"	05 55 432	<b>02412</b>
40 x 1 1/4"	05 55 440	<b>02413</b>
50 x 1 1/2"	05 55 450	<b>02414</b>
38 x 1 1/2"	05 55 451	<b>02415</b>
60 x 2"	05 55 463	<b>02416</b>

H	F	S	L	L <sub>1</sub>
66	36	32	35	14
70	36	32	35	18
73	36	32	38	18
81	41	36	42	19
98	52	46	47	25
106	61	55	52	25
116	74	65	57	25
116	74	65	57	25
127	90	80	60	29

### UP. 55. SPIMT - BOCCHETTONE PORTAGOMMA

Spigot union male threaded

Bocchettone portagomma filetto maschio



E x G	RIF.	CODICE
16 x 3/8"	05 55 616	<b>02417</b>
18 x 1/2"	05 55 618	<b>02418</b>
20 x 1/2"	05 55 620	<b>02419</b>
25 x 3/4"	05 55 625	<b>02420</b>
30 x 1"	05 55 632	<b>02421</b>
40 x 1 1/4"	05 55 640	<b>02422</b>
50 x 1 1/2"	05 55 650	<b>02423</b>
38 x 1 1/2"	05 55 651	<b>02424</b>
60 x 2"	05 55 663	<b>02425</b>

H	F	S	L	L <sub>1</sub>
66	36	32	35	14
70	36	32	35	18
73	36	32	38	18
81	41	36	42	19
98	52	46	47	25
106	61	55	52	25
116	74	65	57	25
116	74	65	57	25
127	90	80	60	29

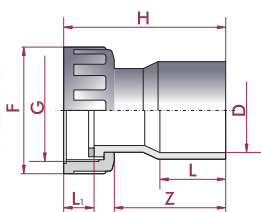
### UP. 56. SF - RACCORDO CONNESSIONE

Fitting connection

- Female solvent socket
- Metric series

Raccordo connessione

- Incollaggio femmina
- Serie metrica



D x G	PN	RIF.	CODICE
40 x 2"	16	05 56 440	<b>05350</b>
50 x 2"	16	05 56 450	<b>05351</b>

L	Z	H	F	L <sub>1</sub>
26	16	46	75	17
39	66	96	75	18

## PVC-U MANIFOLD FITTINGS COLLETTORI PVC-U

- Manifold fittings specially designed for the fast connection of 1" threaded elements, like electric valves assemblies, water supply, etc.
- Allowing fast and trouble-free installations.
- Available sizes: 1"
- Material: PVC-U
- PN 10 (150 psi)

Most irrigation systems need multiple watering stations, either for small residential areas, large landscapes or agriculture areas. At home one might have separate stations for the lawn and flower beds or there may not be enough water to irrigate the whole garden at the same time. This is when a series of valves is required.

These valves need to be connected together to the same source of water. The older ways were to create a manifold with costly galvanised metal or permanent assemblies.

Now with Cepex manifold fittings the job can be done:

- easier: no tools are required
- quicker: all parts are made to fit into each other
- more flexible: easy to change once assembled

- Collettori pensati specialmente per l'installazione di elettrovalvole.
- Permettono la realizzazione di impianti con tutta facilità e rapidità.
- Dimensione disponibile: 1"
- Materiale: PVC-U
- PN 10 (150 psi)

Nella maggioranza dei sistemi di irrigazione, siano essi piccoli come gli impianti residenziali o di maggiori dimensioni per irrigazioni di aree verdi o agricole, richiedono l'uso di più settori di irrigazione. Nel caso ad esempio che sia necessario disporre di zone separate per il prato e per le piante, o che non sia disponibile la necessaria quantità d'acqua per l'irrigazione di tutto il giardino contemporaneamente.

E' richiesto in questo caso l'uso di più elettrovalvole che devono essere collegate alla medesima alimentazione idrica.

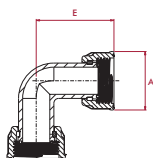
In passato si installavano collettori in metallo galvanizzato di costo elevato o con fissaggi permanenti. Ora, con gli accessori per collettori Cepex, questo lavoro può essere fatto nella forma più:

- facile: non sono necessari attrezzi
- rapida: tutti i componenti sono studiati per essere combinati tra loro
- flessibile: è facile cambiare la composizione una volta realizzata

### UP. 01. MFD. FF - GOMITO COLLETTORE

- 90° elbow**  
• Female/female

- Gomitto 90°**  
• Femmina/femmina



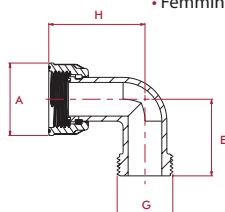
G	PN	RIF.	CODICE
1"	10	72 01 632	<b>41850</b>

A	E
43	57

### UP. 01. MFD. FM - GOMITO COLLETTORE

- 90° elbow**  
• Female/male

- Gomitto 90°**  
• Femmina/maschio



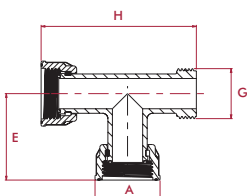
G	PN	RIF.	CODICE
1"	10	72 01 432	<b>41851</b>

A	E	H
43	46	57

### UP. 03. MFD. FFM - TI COLLETTORE

- 90° tee**  
• Female/female/male

- Ti 90°**  
• Femmina/femmina/maschio



G	PN	RIF.	CODICE
1"	10	72 03 432	<b>41852</b>

A	E	H
43	57	102

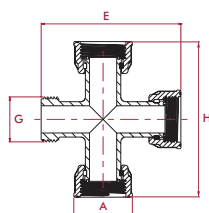
### UP. 28. MFD. FFFM - CROCE COLLETTORE

**Cross**

• Female/female/female/male

**Croce**

• Femmina/femmina/femmina/maschio



G	PN	RIF.	CODICE
1"	10	72 28 432	<b>41852</b>

A	E	H
43	103	114

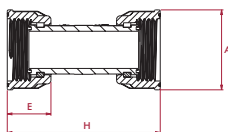
### UP. 05. MFD. FF - MANICOTTO COLLETTORE

**Socket**

• Female/female

**Manicotto**

• Femmina/femmina



G	PN	RIF.	CODICE
1"	10	72 05 632	<b>41854</b>

A	E	H
43	24	82

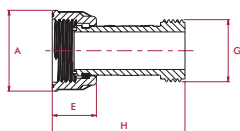
### UP. 05. MFD. FM - MANICOTTO COLLETTORE

**Socket**

• Female/male

**Manicotto**

• Femmina/maschio



G	PN	RIF.	CODICE
1"	10	72 05 432	<b>41855</b>

A	E	H
43	24	71

### UP. 18. MFD. MT - NIPPLO CONNETTORE

**Nipple**

• Male threaded

**Nipplo**

• Filetto maschio



G	PN	RIF.	CODICE
1"	10	72 28 432	<b>41852</b>

### UP. 33. MFD. MTR - NIPPLO RIDOTTO COLLETTORE

**Reducing nipple**

• Male threaded

**Nipplo ridotto**

• Filetto maschio



G	PN	RIF.	CODICE
1"	10	72 33 432	<b>41852</b>

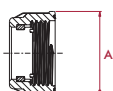
### UP. 07. MFD. FT - TAPPO COLLETTORE

**Cap**

• Female thread

**Tappo**

• Filetto femmina



G	PN	RIF.	CODICE
1"	10	72 07 032	<b>41861</b>

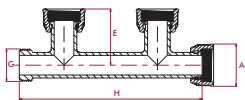
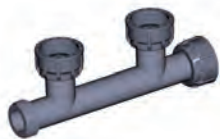
A
43

**UP. 26. MFD. 2OUT - COLLETTORE**
**2-outlet manifold**

- 3 Female thread x 1 male thread

**Collettore PVC-U 2 uscite**

- 3 filetto femmina x 1 filetto maschio



G	PN	RIF.	CODICE
1"	10	72 26 232	<b>41858</b>

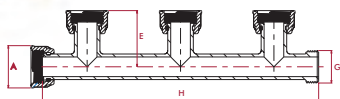
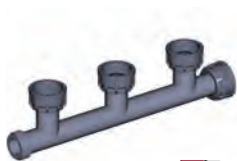
A	E	H
43	57	186

**UP. 26. MFD. 3OUT - COLLETTORE**
**3-outlet manifold**

- 4 Female thread x 1 male thread

**Collettore PVC-U 3 uscite**

- 4 filetto femmina x 1 filetto maschio



G	PN	RIF.	CODICE
1"	10	72 26 332	<b>41859</b>

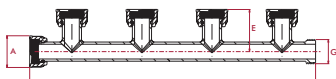
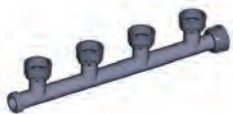
A	E	H
43	57	281

**UP. 26. MFD. 4OUT - COLLETTORE**
**4-outlet manifold**

- 5 Female thread x 1 male thread

**Collettore PVC-U 4 uscite**

- 5 filetto femmina x 1 filetto maschio



G	DN	PN	RIF.	CODICE
1"	20	10	72 26 432	<b>41860</b>

A	E	H
43	57	388

## SIGHT GLASSES VISORI PER LIQUIDI

- Elemento necesario para mostrar el paso de líquido por una instalación, así como la visualización del estado del líquido (grado de turbidez).
- Dos modelos disponibles, con el visor en distintos materiales (PMMA o SAN).

- Elemento necessario al fine di evidenziare il passaggio di liquido da un impianto, oltre alla visualizzazione dello stato del liquido (grado di torbidità).
- Due modelli disponibili, con visore di materiale diverso (PMMA o SAN).

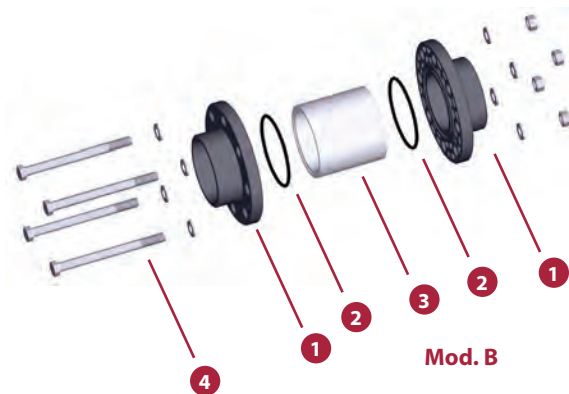
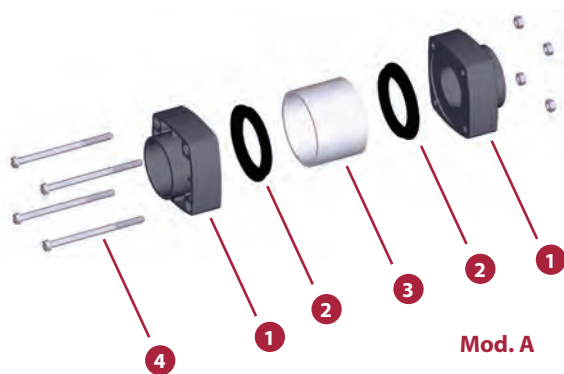
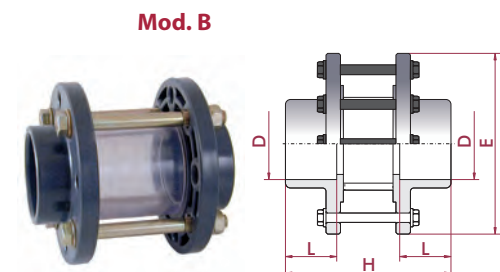
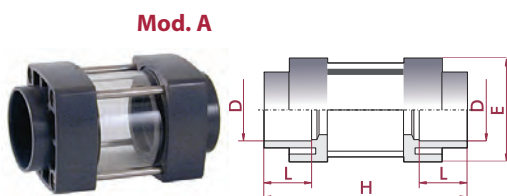


FIG.	Parts	Parti	Materiale
1	Union / flange	Collare / flangia	PVC-U
2	O-ring	Guarnizione	EPDM
3	Viewer	Visori	PMMA / SAN
4	Bolts	Vite	Acciaio zincato

### UP. 54. SF

- Material: D50 - D63: PMMA (Mod. A) D75 - D225: SAN (Mod. B)
- 4 bolts
- Female solvent socket
- Metric series

- Materiali: D50 - D63: PMMA (Mod. A) D75 - D225: SAN (Mod. B)
- 4 viti
- Incollaggio femmina
- Serie metrica



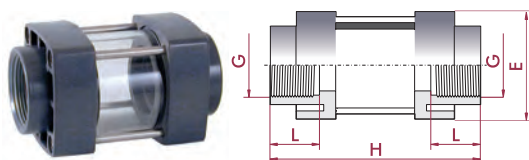
D	DN	PN	RIF.	CODICE
50	40	6	05 54 050	<b>02387</b>
63	50	6	05 54 063	<b>02388</b>
75	65	10	05 54 075	<b>02389</b>
90	80	10	05 54 090	<b>02390</b>
110	100	10	05 54 110	<b>02391</b>
125	110	10	05 54 125	<b>02392</b>
140	125	10	05 54 140	<b>02393</b>
160	150	10	05 54 160	<b>02394</b>
200	175	10	05 54 200	<b>02395</b>
225	200	10	05 54 225	<b>02396</b>

L	H	E	Mod.
31	130	80	A
38	159	92	A
44	165	185	B
51	180	200	B
61	250	220	B
69	280	230	B
76	310	250	B
86	360	285	B
106	420	315	B
119	500	340	B

### UP. 54. FT

- Material: PMMA
- 4 bolts
- BSP female thread

- Materiali: PMMA
- 4 viti
- Filetto femmina BSP



D	DN	PN	RIF.	CODICE
1½"	40	6	05 54 650	<b>02397</b>
2"	50	6	05 54 663	<b>02398</b>

L	H	E
31	130	80
38	159	92

## FLOWMETERS - ROTAMETER

### FLUSSIMETRI

#### FEATURES

Flowmeters are transparent tubes with conical shape (narrow in its lower part and wider in the upper); they are installed in a perfectly vertical position along with the pipe of which we want to know the flow.

Within the tube there is a stainless steel floater, that will move upwards reaching a specific height depending on the weight of the floater and water pressure.

Thus, the greater is the flow, the higher will the floater move, marking a flow (l/h or GPM) in the scale which is stamped on the transparent tube.

- Available models from 10 to 1000 l/h (0,04 - 4,4 GPM).
- Assembly in vertical position.
- Union bushes in PVC-U.
- Tube in Styrene Methyl Methacrylate Copolymer.
- Measuring tube available in Polysulfone, Trogamid T<sup>®</sup>, etc. upon request.
- Float stops in PVDF and floats in AISI 316.
- Maximum working temperature: 55°C (131°F) according to standards VDE / VDI 3531, class 6.
- Maximum pressure 15 bar.
- Two visible scales on each meter: l/h and GPM.
- Available upon request: limit switches and transmitters.
- Applications: process control in water treatment, osmosis, heating and refrigeration systems, chemical industries, pharmaceuticals, etc.

#### CARATTERISTICHE

I flussimetri sono tubi trasparenti a forma conica (stretti nella zona inferiore e più larghi in quella superiore); si montano in posizione perfettamente verticale in serie alla condotta nella quale si voglia conoscere la portata.

Internamente al tubo è presente un flottante in acciaio INOX, che si porterà fino al raggiungimento di un'altezza che dipenderà dal peso del flottante e dalla pressione dell'acqua.

Quindi, tanto più elevata è la portata, tanto più in alto si posizionerà il flottante, indicando la portata (l/h o GPM) letta sulla scala graduata impressa sul corpo trasparente.

- Modelli disponibili da 10 a 1000 l/h (0,04 - 4,4 GPM).
- Montaggio in posizione verticale.
- Raccordi in PVC-U.
- Tubo in Styrene Methyl Methacrylate Copolymer, Trogamid T<sup>®</sup>, etc. su richiesta.
- Su richiesta tubo per misura disponibile in Polisulfone.
- Arresti flottante PVDF.
- Flottante in AISI 316.
- Temperatura massima di lavoro: 55°C (131°F) secondo norme VDE / VDI 3531, classe 6.
- Pressioni fino a 15 bar.
- Doppia scala visibile in ogni flussimetro: l/h e GPM.
- Disponibili su richiesta: automatismi e trasmettitori elettrici.
- Applicazioni: controllo di processi in trattamento dell'acqua, osmosi, riscaldamento e raffreddamento, industria chimica, farmaceutica, etc.

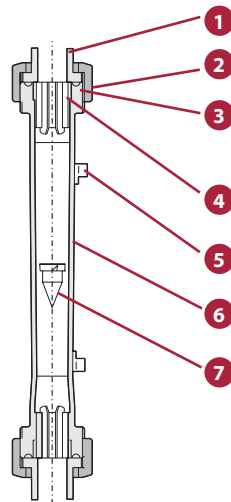
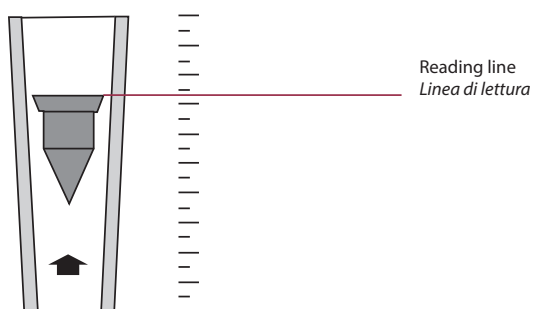


FIG.	Parts	Parti	Materiale
1	Union end	Manicotto unione	PVC-U
2	Union nut	Ghiera	PVC-U
3	O-ring seal	O-ring	EPDM
4	Stops	Arresti flottante	PVDF
5	Indicator	Indicatore	PE
6	Measuring tube	Tubo per misura	Metacrilato
7	Float	Flottante	AISI 316

## OPERATION



## FUNZIONAMENTO

Tipo di polimero	Copolimero di stirene e metacrilato
Nomenclatura	SMMA
RESISTENZA CHIMICA	
Acetone	x
Olio insaturo	x
Olio saturo	C
Olio minerale	✓
Olio d'oliva	✓
Alcol a basso peso molecolare	C
Alcol ad alto peso molecolare	✓
Acido inorganico diluito	✓
Acido inorganico concentrato	✓
Composto alogenato	x
Benzina	x
Benzene	x
Toluene	x
Candeggina	✓
Detergente	✓
Sali inorganici	✓

**C:** Conditioned resistance. In some cases the material may turn yellow, loose transparency or micro fissures could appear.

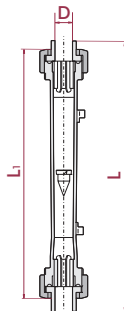
**C:** Resistenza condizionata. In alcuni casi si può verificare ingiallimento, perdita di trasparenza o formazione di microfessure.

**UP. 92. SF. M - FLUSSIMETRO**
**Flowmeter**

- Tube in Styrene Methyl Methacrylate Copolymer
- Female solvent socket

**Flussimetro**

- Tubo in metacrilato di metile
- Incollaggio femmina



D	DN	RIF.	CODICE
20	15	05 92 020A	<b>20205</b>
20	15	05 92 020B	<b>20206</b>
20	15	05 92 020C	<b>20207</b>
25	20	05 92 025A	<b>20208</b>
25	20	05 92 025B	<b>20209</b>
25	20	05 92 025C	<b>20210</b>

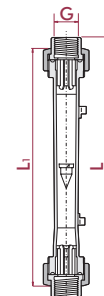
GPM	l/h	L	L <sub>1</sub>
0,04 - 0,44	10 - 100	232	198
0,06 - 0,66	16 - 160	232	198
0,1 - 1,1	25 - 250	232	198
0,2 - 1,8	40 - 400	232	198
0,3 - 2,7	60 - 630	232	198
0,4 - 4,4	100 - 1000	232	198

**UP. 92. FT. M - FLUSSIMETRO**
**Flowmeter**

- Tube in Styrene Methyl Methacrylate Copolymer
- BSP female thread

**Flussimetro**

- Tubo in metacrilato di metile
- Filetto femmina BSP



G	DN	RIF.	CODICE
½"	15	05 92 620A	<b>20211</b>
½"	15	05 92 620B	<b>20212</b>
½"	15	05 92 620C	<b>20213</b>
¾"	20	05 92 625A	<b>20214</b>
¾"	20	05 92 625B	<b>20215</b>
¾"	20	05 92 625C	<b>20216</b>

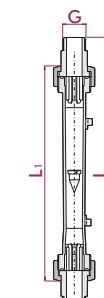
GPM	l/h	L	L <sub>1</sub>
0,04 - 0,44	10 - 100	232	198
0,06 - 0,66	16 - 160	232	198
0,1 - 1,1	25 - 250	232	198
0,2 - 1,8	40 - 400	232	198
0,3 - 2,7	60 - 630	232	198
0,4 - 4,4	100 - 1000	232	198

**UP. 92. MT. M - FLUSSIMETRO**
**Flowmeter**

- Tube in Styrene Methyl Methacrylate Copolymer
- BSP male thread

**Flussimetro**

- Tubo in metacrilato di metile
- Filetto maschio BSP



G	DN	RIF.	CODICE
½"	15	05 92 420A	<b>20217</b>
½"	15	05 92 420B	<b>20218</b>
½"	15	05 92 420C	<b>20219</b>
¾"	20	05 92 425A	<b>20220</b>
¾"	20	05 92 425B	<b>20221</b>
¾"	20	05 92 425C	<b>20222</b>

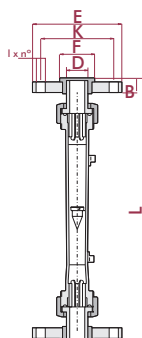
GPM	l/h	L	L <sub>1</sub>
0,04 - 0,44	10 - 100	249	198
0,06 - 0,66	16 - 160	249	198
0,1 - 1,1	25 - 250	249	198
0,2 - 1,8	40 - 400	252	198
0,3 - 2,7	60 - 630	252	198
0,4 - 4,4	100 - 1000	252	198

**UP. 92. FLG. M - FLUSSIMETRO**
**Flowmeter**

- Tube in Styrene Methyl Methacrylate Copolymer
- With flanges

**Flussimetro**

- Tubo in metacrilato di metile
- Con flange



D	DN	RIF.	CODICE
20	15	05 92 220A	<b>20223</b>
20	15	05 92 220B	<b>20224</b>
20	15	05 92 220C	<b>20225</b>
25	20	05 92 225A	<b>20226</b>
25	20	05 92 225B	<b>20227</b>
25	20	05 92 225C	<b>20228</b>

GPM	l/h	E	K	F	l x n°	B	L
0,04 - 0,44	10 - 100	95	65	45	14x4	12	257
0,06 - 0,66	16 - 160	95	65	45	14x4	12	257
0,1 - 1,1	25 - 250	95	65	45	14x4	12	257
0,2 - 1,8	40 - 400	105	75	58	14x4	13	260
0,3 - 2,7	60 - 630	105	75	58	14x4	13	260
0,4 - 4,4	100 - 1000	105	75	58	14x4	13	260

## SOLVENT CEMENT / CLEANER / PTFE TAPE

### COLLANTI / SOLVENTI / NASTRI PTFE

#### NOTES ABOUT THE SOLVENT

- Carry out an accurate turnover of the stock as the solvent cement can lose the original characteristics after 12 months of its manufacture.
- Stock in a dry and fresh place.
- Please, read the instructions of use.
- Different solvent cements for PVC-U and PVC-C (read the description).
- If you want to read the solvent socket recommendations, please refer to Pipe installation Section

#### ATTENZIONE

- Effettuare una rotazione corretta del manicotto visto che la colla può perdere le proprie caratteristiche originali dopo un anno dalla relativa data di produzione.
- Stoccare in luogo asciutto e fresco.
- Consultare le normative in tema di uso dell'imballaggio.
- Colle diverse per PVC-U e PVC-C (vedi descrizione).
- Per consultare le raccomandazioni per l'installazione con colla, vedi Sezione relativa a Installazione tubazioni.

#### Average joints for 1.000 cm<sup>3</sup> of solvent cement N° approssimato di incollaggi effettuati con 1.000 cc di collante

Ø of pipe Ø del tubo	16	20	25	32	40	50	63	75	90	110	125	140	160	200	225	250	315	400
N° of joints N° di incollaggi	390	375	300	250	200	110	80	55	40	25	22	18	11	7	5	4	3	2

### UP. 90. SC

#### Cepex PVC-U solvent cement

#### Collante PVC-U Cepex



Size   Formato	Vol.	RIF.	CODICE
Tub   Tubetto	125 cm <sup>3</sup>	05 90 012	02429
Can with paint brush   Barattolo con applicatore	250 cm <sup>3</sup>	05 90 026	02430
Can   Barattolo	500 cm <sup>3</sup>	05 90 050	02427
Can with paint brush   Barattolo con applicatore	500 cm <sup>3</sup>	05 90 051	09043
Can   Barattolo	1.000 cm <sup>3</sup>	05 90 100	02426
Can with paint brush   Barattolo con applicatore	1.000 cm <sup>3</sup>	05 90 101	09044

### UP. 90. SCB

#### BONDITITE solvent cement PVC-U

- Fast action
- Especially indicated for PVC flexible pipe

#### Collante BONDITITE PVC-U

- Azione rapida
- Indicato specialmente per tubo in PVC flessibile



Size   Formato	Vol.	RIF.	CODICE
Can with paint brush   Barattolo con applicatore	250 cm <sup>3</sup>	05 90 026B	27050
Can with paint brush   Barattolo con applicatore	500 cm <sup>3</sup>	05 90 051B	27051
Can with paint brush   Barattolo con applicatore	1.000 cm <sup>3</sup>	05 90 101B	27052

## UP. 90. TSC

**TANGIT solvent cement PVC-U**
**Collante TANGIT PVC-U**


Size   Formato	Vol.	RIF.	CODICE
Can with paint brush   Barattolo con applicatore	500 cm <sup>3</sup>	05 90 350	<b>02434</b>
Can   Barattolo	1.000 cm <sup>3</sup>	05 90 400	<b>02433</b>

## UP. 90. SCU

**UNI-100 solvent cement PVC-U**
**Collante UNI-100 PVC-U**


Size   Formato	Vol.	RIF.	CODICE
Can with paint brush   Barattolo con applicatore	500 cm <sup>3</sup>	05 90 051 UNI	<b>52706</b>
Can with paint brush   Barattolo con applicatore	1.000 cm <sup>3</sup>	05 90 101 UNI	<b>52707</b>

## UP. 90. SCH

**HCR-36 solvent cement PVC-U**

• High chemical resistance

**Collante HCR-36 PVC-U**

• Alta resistenza chimica



Size   Formato	Vol.	RIF.	CODICE
Can with paint brush   Barattolo con applicatore	1.000 cm <sup>3</sup>	05 90 100 HCR	<b>52711</b>

Sulphuric acid: concentrations > 70%  
 Hydrochloric acid: concentrations > 25%  
 Nitric acid: concentrations > 20%  
 Lyes (caustic soda): concentrations > 35%  
 Fluoric acid: any concentration  
 Sodium hypochlorite: active chlorine content > 7.5%

## ABS. 90. SCW

**B-21 white ABS solvent cement**

- Up to D160
- Max. 10 bar
- Maximum tolerance 0.3 mm diametrical clearance

**Collante ABS B-21 bianco**

- Fino a D160
- Max. 10 bar
- Massima tolleranza 0.3 mm in diam.



Size   Formato	Vol.	RIF.	CODICE
Can with paint brush   Barattolo con applicatore	500 cm <sup>3</sup>	37 90 051 BL	<b>52709</b>

## ABS. 90. SCG

**B-25 grey ABS solvent cement**

- Up to D315
- Max. 15 bar
- Maximum tolerance 0.6 mm diametrical clearance

**Collante ABS B-25 grigio**

- Fino a D315
- Max. 15 bar
- Massima tolleranza 0.6 mm in diam.



Size   Formato	Vol.	RIF.	CODICE
Can with paint brush   Barattolo con applicatore	500 cm <sup>3</sup>	05 90 051 GR	<b>52710</b>

## UP. 90. CL

Cleaner

Solvente



Size   Formato	Vol.	RIF.	CODICE
Can   Barattolo	500 cm <sup>3</sup>	05 90 250	<b>02432</b>
Can   Barattolo	1.000 cm <sup>3</sup>	05 90 300	<b>02431</b>

## UP. 90. TF

PTFE thread-wrap tape

Nastro di PTFE



Thickness Spessore	Width Larghezza	Length Lunghezza	RIF.	CODICE
0,075 mm	12 mm	12 m	05 90 500	<b>02435</b>
0,10 mm	19 mm	50 m	05 90 550	<b>02436</b>