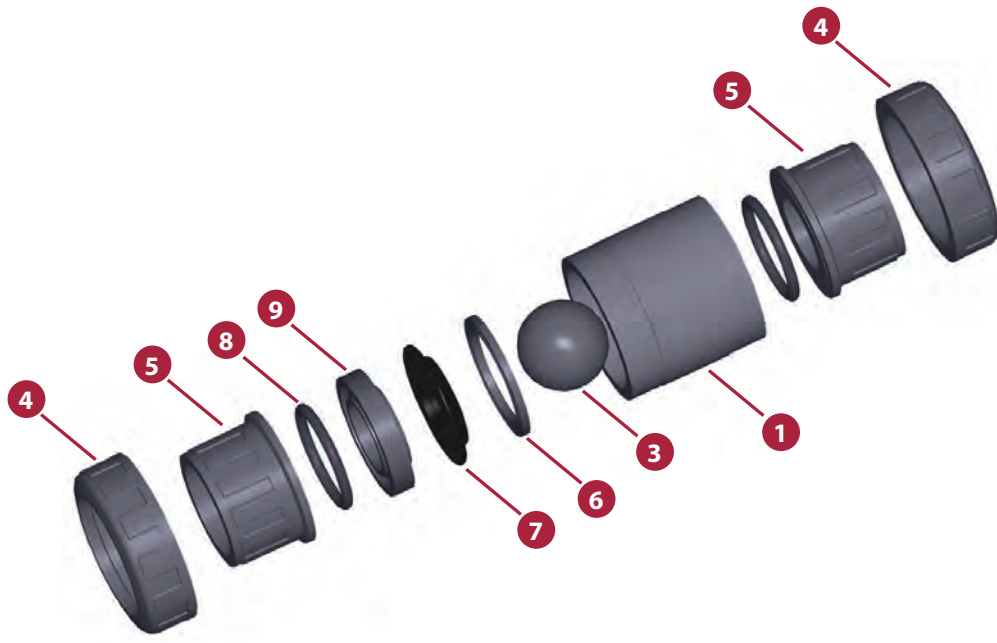


PVC-U CHECK VALVES - BALL SERIES

VALVOLE DI NON RITORNO PVC-U - SERIE SFERA

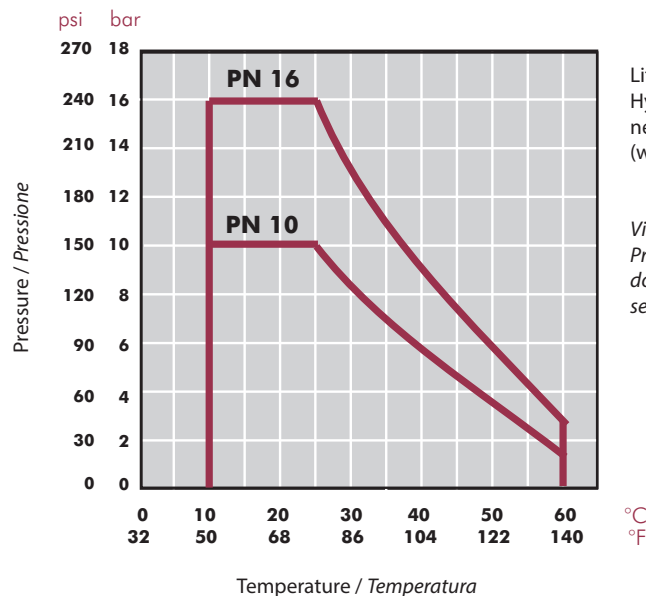


| | | |
|-----------------------------|---|---|
| Dimensioni | Incollaggio D20 - D110 (DN15 - DN100) Filettato ½" - 4" | |
| Standard | Incollaggio - Metrico, British standard, ASTM, JIS Filettato - BSP, NPT | EN ISO 1452, EN ISO 15493, BS 4346-1, ASTM D 2467, JIS K 6743 ISO 228-1, ASTM D 2464 |
| Pressione di lavoro | @ 20°C (73°F) D20-D63 (½" - 2"): PN 16 (240 psi) D75 - D110 (2½" - 4"): PN 10 (150 psi) | |
| Pressione di ritorno minima | 0,2 bar (3 psi) Minimal downstream pressure to keep the valve closed in horizontal position. Pressione minima a valle per conservare la valvola chiusa in caso di installazione orizzontale. | |
| • Materiale: | O-ring: EPDM / FPM | |
| Caratteristiche | <ul style="list-style-type: none"> • Completely made in plastic - corrosion free. • 100% factory tested. • Excellent flow rate. • Easy installation and maintenance. • May be used either vertically and horizontally. • Available in PVC-U and Corzan® PVC-C. • Resistance to many inorganic chemicals. • Excellent flow characteristics. | <ul style="list-style-type: none"> • Prodotta completamente di plastica - non soggetta a corrosioni. • Testate al 100% in fabbrica. • Eccellenti caratteristiche di conduzione. • Facile installazione e manutenzione. • Può essere usata in posizione verticale o orizzontale. • Disponibile in PVC-U e Corzan® PVC-C. • Resistente a molti composti chimici inorganici. |
| Certificazioni / norme | Norma sul design della valvola di non ritorno - ISO 16137:2006 | |



| FIG. | Parts | Parti | Materiale |
|------|----------------------|--------------------|------------|
| 1 | Body | Corpo | PVC-U |
| 3 | Ball | Sfera | PVC-U |
| 4 | Union nut | Ghiera | PVC-U |
| 5 | End connector | Manicotto | PVC-U |
| 6 | Closing ring | Anello di chiusura | PVC-U |
| 7 | Body o-ring | O-ring corpo | EPDM / FPM |
| 8 | End connector o-ring | O-ring manicotto | EPDM / FPM |
| 9 | Seal-carrier | Porta o-ring | PVC-U |

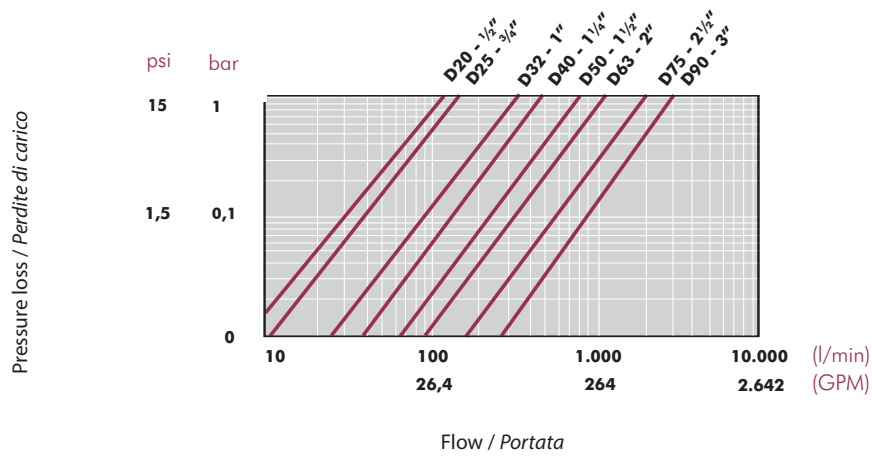
PRESSURE / TEMPERATURE GRAPH
DIAGRAMMA PRESSIONE / TEMPERATURA



Life: 25 years
 Hydrostatic maximum pressure a component may withstand in continuous service (without overpressure)

Vita utile: 25 anni
 Pressione idrostatica massima considerando la capacità massima di sopportazione in servizio continuo (senza sovrappressione)

PRESSURE LOSS DIAGRAM
DIAGRAMMA DELLE PERDITE DI CARICO

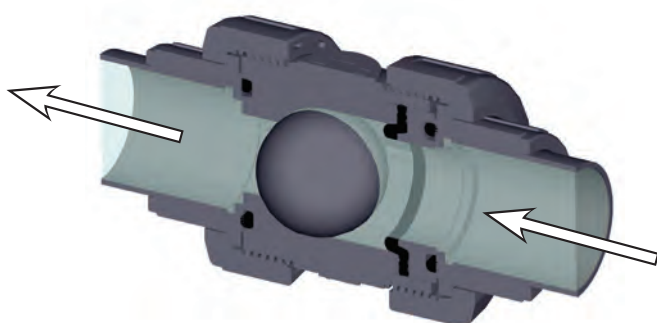


RELATIVE FLOW
FLUSSO RELATIVO

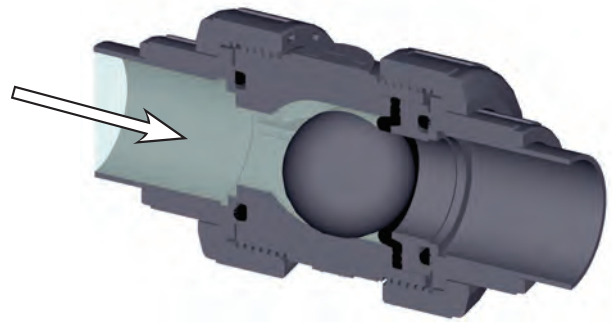
| D | 20-1/2" | 25-3/4" | 32-1" | 40-1 1/4" | 50-1 1/2" | 63-2" | 75-2 1/2" | 90-3" |
|-------------------|---------|---------|-------|-----------|-----------|-------|-----------|-------|
| DN | 15 | 20 | 25 | 32 | 40 | 50 | 65 | 80 |
| Kv ₁₀₀ | 99 | 128 | 308 | 453 | 795 | 1040 | 1932 | 2754 |
| Cv | 7 | 9 | 22 | 32 | 56 | 73 | 135 | 193 |

$Cv = Kv_{100} / 14,28$
 Kv_{100} (l/min, $\Delta p = 1$ bar)
 Cv (GPM, $\Delta p = 1$ psi)

Open
Aperta



Closed
Chiusa



ASSEMBLY INSTRUCTIONS

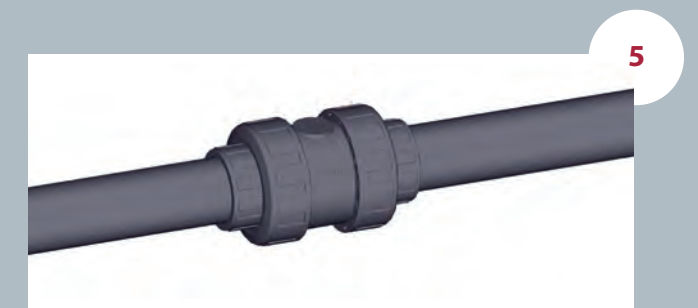
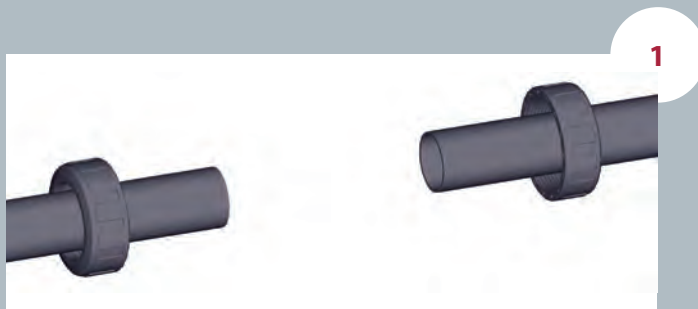
Solvent socket or threaded unions

Loosen the valve union nuts (4) and separate these and the end connectors (5) from the valve body. Pass the pipe through the nuts and then place the bushes over the end of the pipe. The socket unions should be glued onto the pipe using a PVC-U or PVC-C adhesive and pressure should not be applied to the system until a drying period of at least 1 hour per bar of working pressure has elapsed. In the case of threaded unions, PTFE tape should be applied to the male threads. The pipes can now be attached to the valve by hand tightening down the nuts.

ISTRUZIONI DI MONTAGGIO

Unioni incollate o filettate

Svitare le ghiere (4) dalla valvola e separarle dai manicotti (5). Introdurre le ghiere nei tubi e successivamente fissare i manicotti negli estremi del tubo. Le unioni incollate si realizzano con un collante per tubi in PVC-U o PVC-C rigido e non si applicherà pressione finché non sia trascorsa almeno 1 ora per bar. Nelle unioni filettate si porrà nastro di PTFE sui filetti maschio. Terminata questa fase si potrà collocare la valvola tra i manicotti e avvitare a mano le ghiere sopra la valvola.



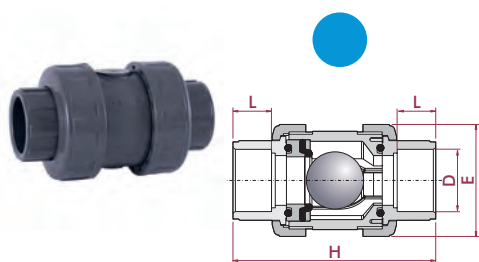
UP-B. 67. SF1 - VALVOLA DI NON RITORNO A SFERA

Ball check valve

- PVC-U body
- Female solvent socket
- Metric series
- O-rings in EPDM

Valvola di non ritorno a sfera

- Corpo in PVC-U
- Incollaggio femmina
- Serie metrica
- O-ring in EPDM



| D | DN | PN | RIF. | CODICE |
|-----|----|----|-----------|--------------|
| 20 | 15 | 16 | 05 67 220 | 22078 |
| 25 | 20 | 16 | 05 67 225 | 22079 |
| 32 | 25 | 16 | 05 67 232 | 22080 |
| 40 | 32 | 16 | 05 67 240 | 22174 |
| 50 | 40 | 16 | 05 67 250 | 25697 |
| 63 | 50 | 16 | 05 67 263 | 25698 |
| 75 | 65 | 10 | 05 67 275 | 22175 |
| 90 | 80 | 10 | 05 67 290 | 22176 |
| 110 | 80 | 10 | 05 67 310 | 22177 |

| L | H | E |
|----|-----|-----|
| 16 | 84 | 52 |
| 19 | 108 | 62 |
| 22 | 119 | 70 |
| 26 | 142 | 84 |
| 31 | 162 | 94 |
| 38 | 192 | 117 |
| 44 | 232 | 148 |
| 51 | 269 | 179 |
| 51 | 269 | 179 |

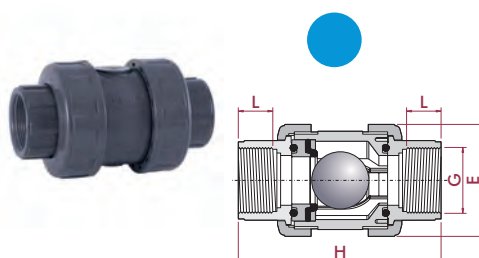
UP-B. 67. FT1 - VALVOLA DI NON RITORNO A SFERA

Ball check valve

- PVC-U body
- BSP female thread
- O-Rings in EPDM

Valvola di non ritorno a sfera

- Corpo in PVC-U
- Filetto femmina BSP
- O-ring in EPDM



| G | DN | PN | RIF. | CODICE |
|-----|----|----|-----------|--------------|
| ½" | 15 | 16 | 05 67 420 | 22061 |
| ¾" | 20 | 16 | 05 67 425 | 22062 |
| 1" | 25 | 16 | 05 67 432 | 22085 |
| 1¼" | 32 | 16 | 05 67 440 | 22086 |
| 1½" | 40 | 16 | 05 67 450 | 25699 |
| 2" | 50 | 16 | 05 67 463 | 25700 |
| 2½" | 65 | 10 | 05 67 475 | 22087 |
| 3" | 80 | 10 | 05 67 490 | 22088 |
| 4" | 80 | 10 | 05 67 510 | 22089 |

| L | H | E |
|----|-----|-----|
| 16 | 84 | 52 |
| 19 | 108 | 62 |
| 22 | 119 | 70 |
| 26 | 142 | 84 |
| 31 | 167 | 94 |
| 38 | 192 | 117 |
| 44 | 232 | 148 |
| 51 | 269 | 179 |
| 61 | 279 | 179 |

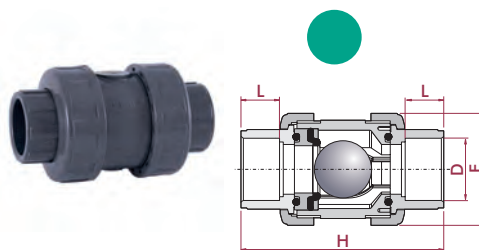
UP-B. 67. SF4 - VALVOLA DI NON RITORNO A SFERA

Ball check valve

- PVC-U body
- Female solvent socket
- Metric series
- O-Rings in FPM

Valvola di non ritorno a sfera

- Corpo in PVC-U
- Incollaggio femmina
- Serie metrica
- O-ring in FPM



| D | DN | PN | RIF. | CODICE |
|-----|----|----|--------------|--------------|
| 20 | 15 | 16 | 05 67 220 VI | 22090 |
| 25 | 20 | 16 | 05 67 225 VI | 22091 |
| 32 | 25 | 16 | 05 67 232 VI | 22092 |
| 40 | 32 | 16 | 05 67 240 VI | 22239 |
| 50 | 40 | 16 | 05 67 250 VI | 25701 |
| 63 | 50 | 16 | 05 67 263 VI | 25702 |
| 75 | 65 | 10 | 05 67 275 VI | 22240 |
| 90 | 80 | 10 | 05 67 290 VI | 22241 |
| 110 | 80 | 10 | 05 67 310 VI | 22242 |

| L | H | E |
|----|-----|-----|
| 16 | 84 | 52 |
| 19 | 108 | 62 |
| 22 | 119 | 70 |
| 26 | 142 | 84 |
| 31 | 162 | 94 |
| 38 | 192 | 117 |
| 44 | 232 | 148 |
| 51 | 269 | 179 |
| 51 | 269 | 179 |

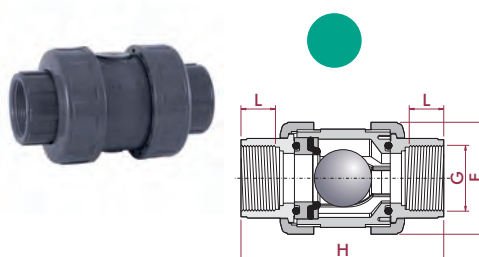
UP-B. 67. FT4 - VALVOLA DI NON RITORNO A SFERA

Ball check valve

- PVC-U body
- BSP female thread
- O-Rings in FPM

Valvola di non ritorno a sfera

- Corpo in PVC-U
- Filetto femmina BSP
- O-ring in FPM



| G | DN | PN | RIF. | CODICE |
|-----|----|----|--------------|--------------|
| ½" | 15 | 16 | 05 67 420 VI | 22243 |
| ¾" | 20 | 16 | 05 67 425 VI | 22244 |
| 1" | 25 | 16 | 05 67 432 VI | 22267 |
| 1¼" | 32 | 16 | 05 67 440 VI | 22268 |
| 1½" | 40 | 16 | 05 67 450 VI | 25703 |
| 2" | 50 | 16 | 05 67 463 VI | 25704 |
| 2½" | 65 | 10 | 05 67 475 VI | 22269 |
| 3" | 80 | 10 | 05 67 490 VI | 22270 |
| 4" | 80 | 10 | 05 67 510 VI | 22893 |

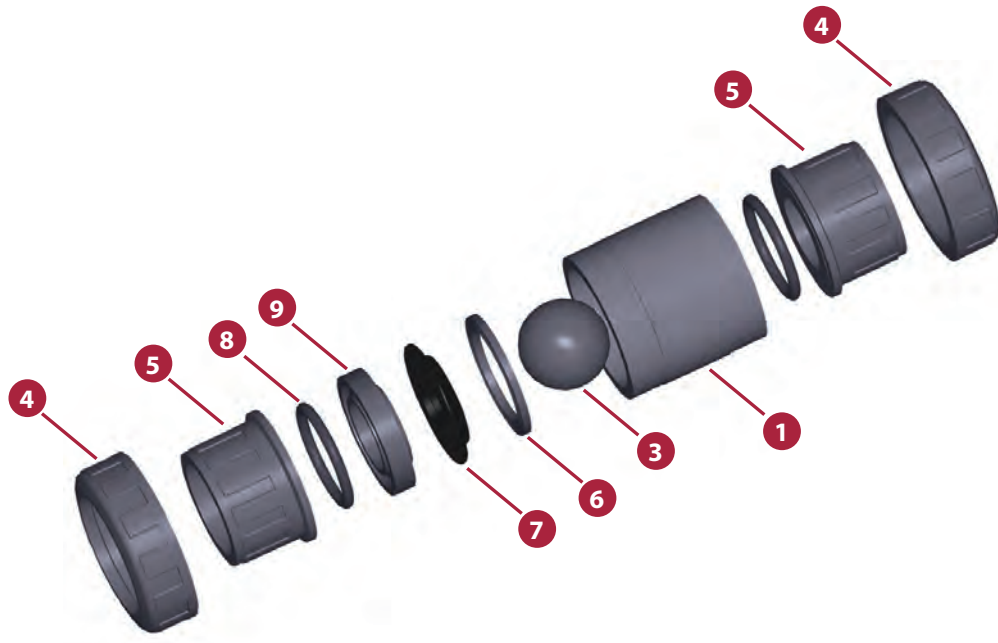
| L | H | E |
|----|-----|-----|
| 16 | 84 | 52 |
| 19 | 108 | 62 |
| 22 | 119 | 70 |
| 26 | 142 | 84 |
| 31 | 167 | 94 |
| 38 | 192 | 117 |
| 44 | 232 | 148 |
| 51 | 269 | 179 |
| 61 | 279 | 179 |

PVC-U CHECK VALVES - BALL SERIES

VALVOLE DI NO RITORNO PVC-U - SERIE SFERA

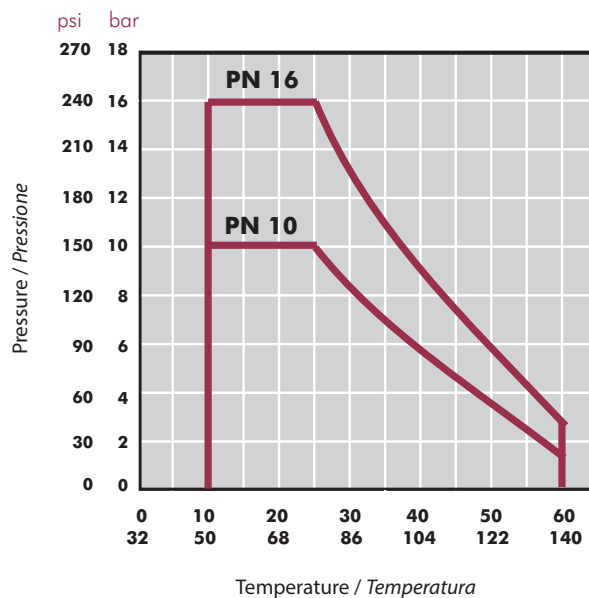


| | | |
|-----------------------------|---|---|
| Dimensioni | Incollaggio D20 - D110 (DN15 - DN100) Filettato ½" - 4" | |
| Standard | Incollaggio - Metrico, British standard, ASTM, JIS Filettato - BSP, NPT | EN ISO 1452, EN ISO 15493, BS 4346-1, ASTM D 2467, JIS K 6743 ISO 228-1, ASTM D 2464 |
| Pressione di lavoro | @ 20°C (73°F) D20-D63 (½" - 2"): PN 16 (240 psi) D75 - D110 (2½" - 4"): PN 10 (150 psi) | |
| Pressione di ritorno minima | 0,2 bar (3 psi) Minimal downstream pressure to keep the valve closed in horizontal position. Pressione minima a valle per conservare la valvola chiusa in caso di installazione orizzontale. | |
| Materiali | O-ring: EPDM / FPM | |
| Caratteristiche | <ul style="list-style-type: none"> • Completely made in plastic - corrosion free. • 100% factory tested. • Excellent flow rate. • Easy installation and maintenance. • May be used either vertically and horizontally. • Available in PVC-U and Corzan® PVC-C. • Resistance to many inorganic chemicals. • Excellent flow characteristics. | <ul style="list-style-type: none"> • Prodotta completamente di plastica - non soggetta a corrosioni. • Testate al 100% in fabbrica. • Eccellenti caratteristiche di conduzione. • Facile installazione e manutenzione. • Può essere usata in posizione verticale o orizzontale. • Disponibile in PVC-U e Corzan® PVC-C. • Resistente a molti composti chimici inorganici. |
| Certificazioni / norme | Norma sul design valvola di non ritorno - ISO 16137:2006 | |



| FIG. | Parts | Parti | Materiale |
|------|----------------------|--------------------|------------|
| 1 | Body | Corpo | PVC-U |
| 3 | Ball | Sfera | PVC-U |
| 4 | Union nut | Ghiera | PVC-U |
| 5 | End connector | Manicotto | PVC-U |
| 6 | Closing ring | Anello di chiusura | PVC-U |
| 7 | Body o-ring | O-ring corpo | EPDM / FPM |
| 8 | End connector o-ring | O-ring manicotto | EPDM / FPM |
| 9 | Seal-carrier | Porta o-ring | PVC-U |

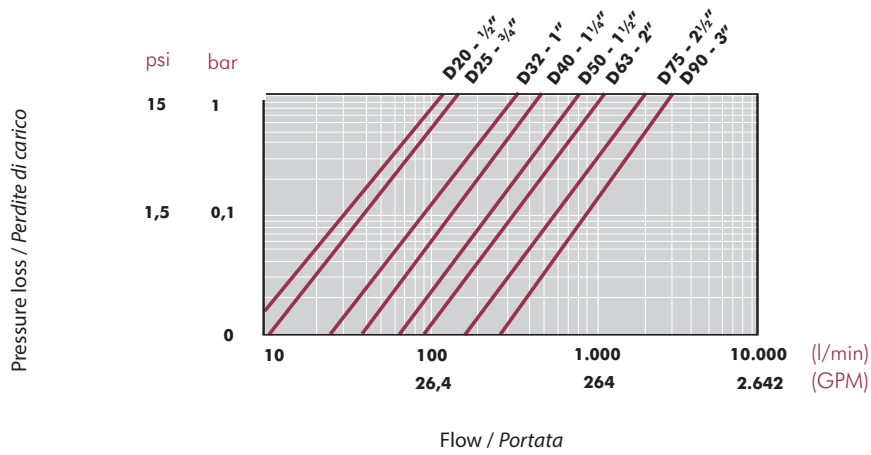
PRESSURE / TEMPERATURE GRAPH
DIAGRAMMA PRESSIONE / TEMPERATURA



Life: 25 years
 Hydrostatic maximum pressure a component may withstand in continuous service (without overpressure)

Vita utile: 25 anni
 Pressione idrostatica massima considerando la capacità massima di sopportazione in servizio continuo (senza sovrappressione)

PRESSURE LOSS DIAGRAM
DIAGRAMMA DELLE PERDITE DI CARICO



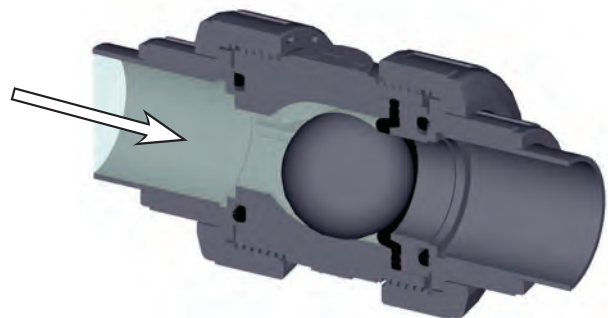
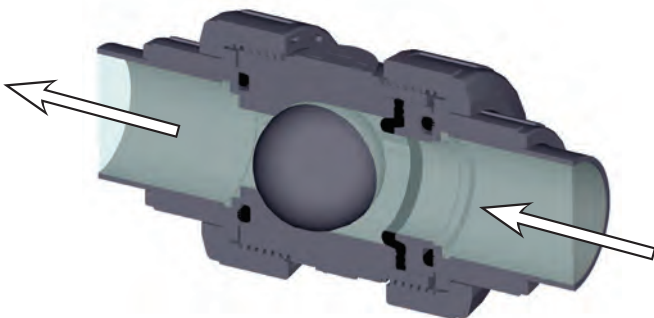
RELATIVE FLOW
FLUSSO RELATIVO

| D | 20-1/2" | 25-3/4" | 32-1" | 40-1 1/4" | 50-1 1/2" | 63-2" | 75-2 1/2" | 90-3" |
|------------|---------|---------|-------|-----------|-----------|-------|-----------|-------|
| DN | 15 | 20 | 25 | 32 | 40 | 50 | 65 | 80 |
| Kv_{100} | 99 | 128 | 308 | 453 | 795 | 1040 | 1932 | 2754 |
| Cv | 7 | 9 | 22 | 32 | 56 | 73 | 135 | 193 |

$Cv = Kv_{100} / 14,28$
 Kv_{100} (l/min, $\Delta p = 1$ bar)
 Cv (GPM, $\Delta p = 1$ psi)

Open
Aperta

Closed
Chiusa



ASSEMBLY INSTRUCTIONS

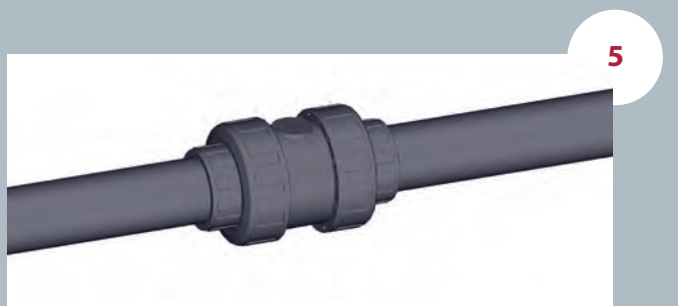
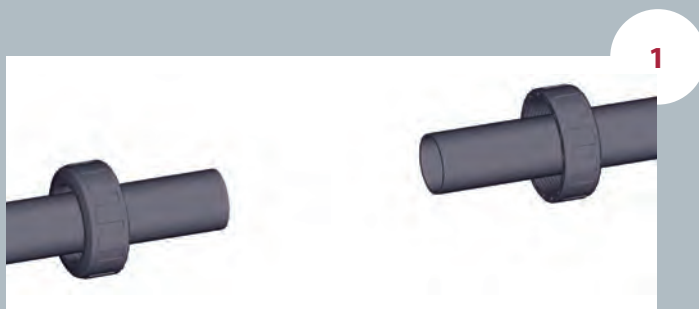
Solvent socket or threaded unions

Loosen the valve union nuts (4) and separate these and the end connectors (5) from the valve body. Pass the pipe through the nuts and then place the bushes over the end of the pipe. The socket unions should be glued onto the pipe using a PVC-U or PVC-C adhesive and pressure should not be applied to the system until a drying period of at least 1 hour per bar of working pressure has elapsed. In the case of threaded unions, PTFE tape should be applied to the male threads. The pipes can now be attached to the valve by hand tightening down the nuts.

ISTRUZIONI DI MONTAGGIO

Unioni incollate o filettate

Svitare le ghiere (4) dalla valvola e separarle dai manicotti (5). Introdurre le ghiere nei tubi e successivamente fissare i manicotti negli estremi del tubo. Le unioni incollate si realizzano con un collante per tubi in PVC-U o PVC-C rigido e non si applicherà pressione finché non sia trascorsa almeno 1 ora per bar. Nelle unioni filettate si porrà nastro di PTFE sui filetti maschio. Terminata questa fase si potrà collocare la valvola tra i manicotti e avvitare a mano le ghiere sopra la valvola.



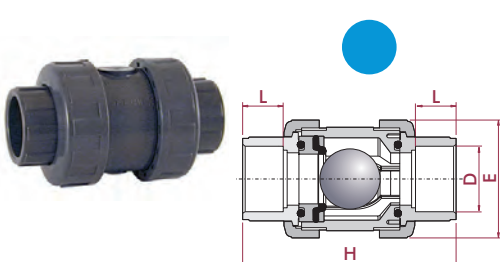
UP-B. **67**. SF1. BS - VALVOLA DI NON RITORNO IN PVC-U A SFERA

Ball check valve

- PVC-U body
- Female solvent socket
- British Standard series
- O-rings in EPDM

Valvola di non ritorno a sfera

- Corpo in PVC-U
- Incollaggio femmina
- Serie British Standard
- O-ring EPDM



| D | DN | PN | RIF. | CODICE |
|-----|----|----|-------------|--------------|
| ½" | 15 | 16 | 05 67 901 E | 33010 |
| ¾" | 20 | 16 | 05 67 902 E | 33011 |
| 1" | 25 | 16 | 05 67 903 E | 33012 |
| 1¼" | 32 | 16 | 05 67 904 E | 33013 |
| 1½" | 40 | 16 | 05 67 905 E | 33014 |
| 2" | 50 | 16 | 05 67 906 E | 33015 |

| L | H | E |
|----|-----|-----|
| 16 | 84 | 52 |
| 19 | 108 | 62 |
| 22 | 119 | 70 |
| 26 | 142 | 84 |
| 31 | 162 | 94 |
| 38 | 192 | 117 |

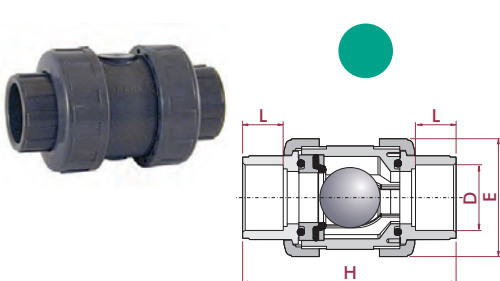
 UP-B. **67**. SF4. BS - VALVOLA DI NON RITORNO IN PVC-U A SFERA

Ball check valve

- PVC-U body
- Female solvent socket
- British Standard series
- O-rings in FPM

Valvola di non ritorno a sfera

- Corpo in PVC-U
- Incollaggio femmina
- Serie British Standard
- O-ring FPM



| D | DN | PN | RIF. | CODICE |
|-----|----|----|--------------|--------------|
| ½" | 15 | 16 | 05 67 901 VE | 33016 |
| ¾" | 20 | 16 | 05 67 902 VE | 33017 |
| 1" | 25 | 16 | 05 67 903 VE | 33018 |
| 1¼" | 32 | 16 | 05 67 904 VE | 33019 |
| 1½" | 40 | 16 | 05 67 905 VE | 33020 |
| 2" | 50 | 16 | 05 67 906 VE | 33021 |

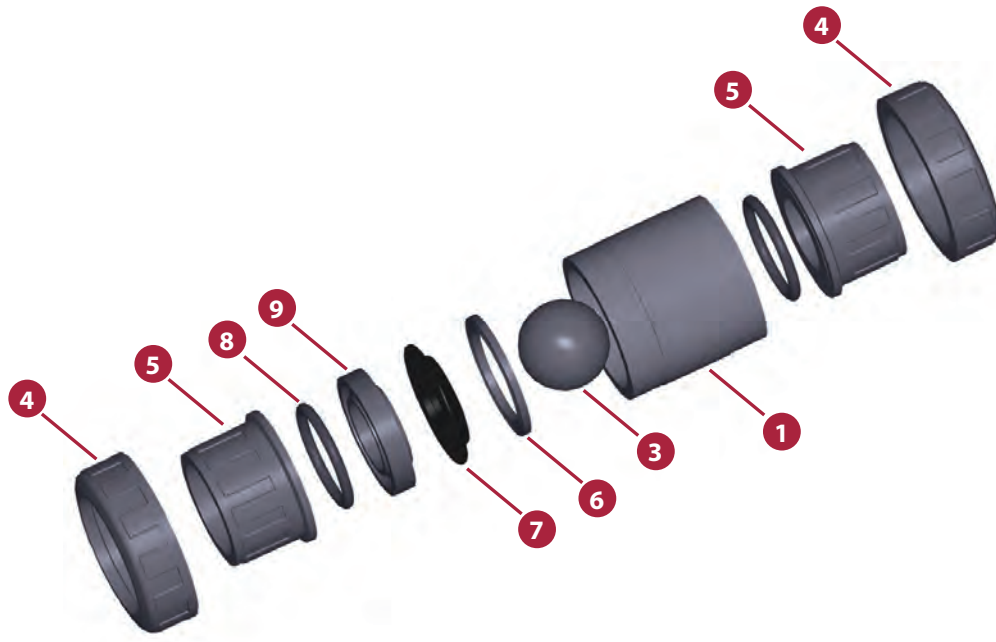
| L | H | E |
|----|-----|-----|
| 16 | 84 | 52 |
| 19 | 108 | 62 |
| 22 | 119 | 70 |
| 26 | 142 | 84 |
| 31 | 162 | 94 |
| 38 | 192 | 117 |

PVC-U CHECK VALVES - BALL SERIES

VALVOLE DI NON RITORNO PVC-U - SERIE SFERA



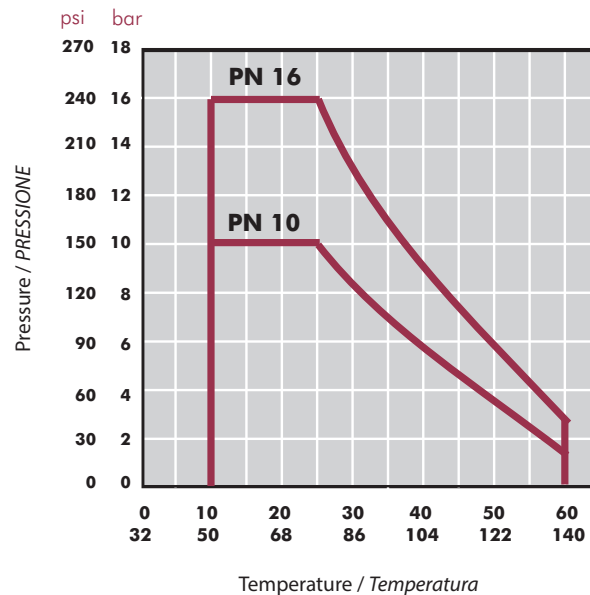
| | | |
|-----------------------------|--|---|
| Dimensioni | Incollaggio D20 - D110 (DN15 - DN100) Filettato ½" - 4" | |
| Standard | Incollaggio - Metrico, British standard, ASTM, JIS Filettato - BSP, NPT | EN ISO 1452, EN ISO 15493, BS 4346-1, ASTM D 2467, JIS K 6743 ISO 228-1, ASTM D 2464 |
| Pressione di lavoro | @ 20°C (73°F) D20-D63 (½" - 2"): PN 16 (240 psi) D75 - D110 (2½" - 4"): PN 10 (150 psi) | |
| Pressione di ritorno minima | 0,2 bar (3 psi) Minimal downstream pressure to keep the valve closed in horizontal position. Pressione minima a valle per conservare la valvola chiusa in caso di installazione orizzontale | |
| Materiali | O-ring: EPDM / FPM | |
| Caratteristiche | <ul style="list-style-type: none"> • Completely made in plastic - corrosion free. • 100% factory tested. • Excellent flow rate. • Easy installation and maintenance. • May be used either vertically and horizontally. • Available in PVC-U and Corzan® PVC-C. • Resistance to many inorganic chemicals. • Excellent flow characteristics. | <ul style="list-style-type: none"> • Prodotta completamente in plastica - non soggetta a corrosioni.. • Testate al 100% in fabbrica. • Eccellenti caratteristiche di conduzione. • Facile installazione e manutenzione. • Può essere usata in posizione verticale o orizzontale. • Disponibile in PVC-U e Corzan® PVC-C. • Resistente a molti composti chimici inorganici. |
| Certificazioni / norme | Norma sul design valvola di non ritorno - ISO 16137:2006 | |



| FIG. | Parts | Parti | Materiale |
|------|----------------------|--------------------|------------|
| 1 | Body | Corpo | PVC-U |
| 3 | Ball | Sfera | PVC-U |
| 4 | Union nut | Ghiera | PVC-U |
| 5 | End connector | Manicotto | PVC-U |
| 6 | Closing ring | Anello di chiusura | PVC-U |
| 7 | Body o-ring | O-ring corpo | EPDM / FPM |
| 8 | End connector o-ring | O-ring manicotto | EPDM / FPM |
| 9 | Seal-carrier | Porta o-ring | PVC-U |

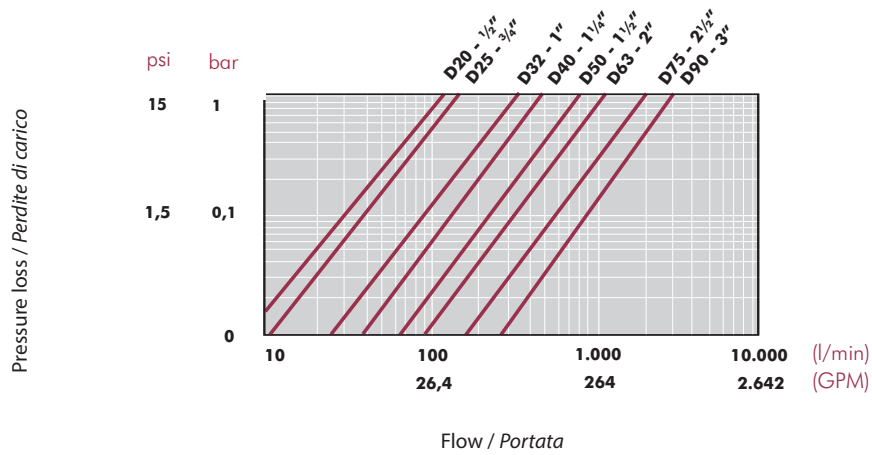
PRESSURE / TEMPERATURE GRAPH

DIAGRAMMA PRESSIONE / TEMPERATURA



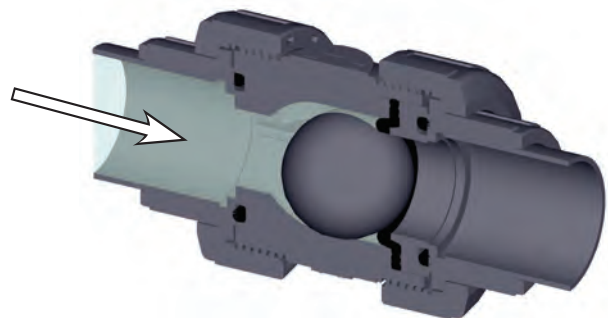
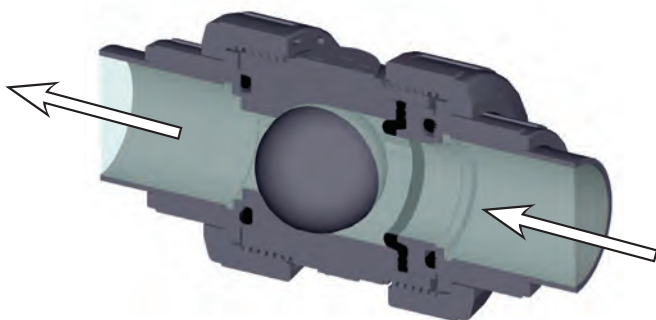
Life: 25 years
Hydrostatic maximum pressure a component may withstand in continuous service (without overpressure)

Vita utile: 25 anni
Pressione idrostatica massima considerando la capacità massima di sopportazione in servizio continuo (senza sovrappressione)

PRESSURE LOSS DIAGRAM
DIAGRAMMA DELLE PERDITE DI CARICO

RELATIVE FLOW
FLUSSO RELATIVO

| D | 20-1/2" | 25-3/4" | 32-1" | 40-1 1/4" | 50-1 1/2" | 63-2" | 75-2 1/2" | 90-3" |
|------------|---------|---------|-------|-----------|-----------|-------|-----------|-------|
| DN | 15 | 20 | 25 | 32 | 40 | 50 | 65 | 80 |
| Kv_{100} | 99 | 128 | 308 | 453 | 795 | 1040 | 1932 | 2754 |
| Cv | 7 | 9 | 22 | 32 | 56 | 73 | 135 | 193 |

$Cv = Kv_{100} / 14,28$
 Kv_{100} (l/min, $\Delta p = 1$ bar)
 Cv (GPM, $\Delta p = 1$ psi)

Open
Aperta
Closed
Chiusa


ASSEMBLY INSTRUCTIONS

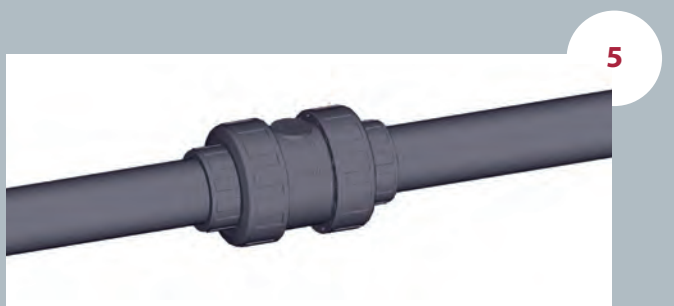
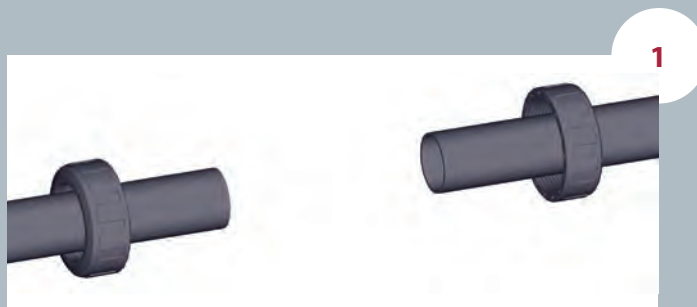
Solvent socket or threaded unions

Loosen the valve union nuts (4) and separate these and the end connectors (5) from the valve body. Pass the pipe through the nuts and then place the bushes over the end of the pipe. The socket unions should be guided onto the pipe using a PVC-U or PVC-C adhesive and pressure should not be applied to the system until a drying period of at least 1 hour per bar of working pressure has elapsed. In the case of threaded unions, PTFE tape should be applied to the male threads. The pipes can now be attached to the valve by hand tightening down the nuts.

ISTRUZIONI DI MONTAGGIO

Unioni incollate o filettate

Svitare le ghiera (4) dalla valvola e separarle dai manicotti (5). Introdurre le ghiera nei tubi e successivamente fissare i manicotti negli estremi del tubo. Le unioni incollate si realizzano con un collante per tubi in PVC-U o PVC-C rigido e non si applicherà pressione finché non sia trascorsa almeno 1 ora per bar. Nelle unioni filettate si porrà nastro di PTFE sui filetti maschio. Terminata questa fase si potrà collocare la valvola tra i manicotti e avvitare a mano le ghiera sopra la valvola.



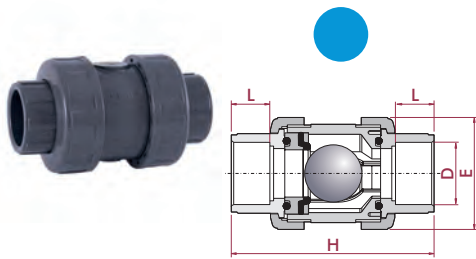
UP-B. **67**. SF1. MA - VALVOLA NON RITORNO PVC-U

Ball check valve

- PVC-U body
- Female solvent socket
- ASTM series
- O-rings in EPDM

Valvola di non ritorno

- Corpo in PVC-U
- Incollaggio femmina
- Serie ASTM
- O-ring EPDM



| D | DN | PN | RIF. | CODICE |
|-----|----|----|---------------|--------------|
| ½" | 15 | 16 | 05 67 801 ED | 27360 |
| ¾" | 20 | 16 | 05 67 802 ED | 27361 |
| 1" | 25 | 16 | 05 67 803 ED | 27362 |
| 1¼" | 32 | 16 | 05 67 804 ED | 27363 |
| 1½" | 40 | 16 | 05 67 805 ED | 27000 |
| 2" | 50 | 16 | 05 67 806 ED | 27001 |
| 2½" | 65 | 10 | 05 67 907 EMA | 27374 |
| 3" | 80 | 10 | 05 67 908 EMA | 27375 |
| 4" | 80 | 10 | 05 67 910 EMA | 27376 |

| L | H | E |
|----|-----|-----|
| 16 | 84 | 52 |
| 19 | 108 | 62 |
| 22 | 119 | 70 |
| 26 | 142 | 84 |
| 31 | 162 | 94 |
| 38 | 192 | 117 |
| 44 | 232 | 148 |
| 51 | 269 | 179 |
| 51 | 269 | 179 |

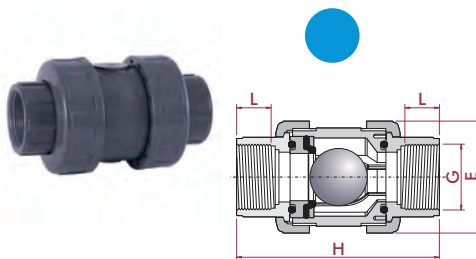
 UP-B. **67**. FT1. MA - VALVOLA NON RITORNO PVC-U

Ball check valve

- PVC-U body
- NPT female thread
- O-Rings in EPDM

Valvola di non ritorno

- Corpo in PVC-U
- Filetto femmina NPT
- O-ring EPDM



| G | DN | PN | RIF. | CODICE |
|-----|----|----|--------------|--------------|
| ½" | 15 | 16 | 05 67 801 ED | 27360 |
| ¾" | 20 | 16 | 05 67 802 ED | 27361 |
| 1" | 25 | 16 | 05 67 803 ED | 27362 |
| 1¼" | 32 | 16 | 05 67 804 ED | 27363 |
| 1½" | 40 | 16 | 05 67 805 ED | 27000 |
| 2" | 50 | 16 | 05 67 806 ED | 27001 |
| 2½" | 65 | 10 | 05 67 807 E | 27368 |
| 3" | 80 | 10 | 05 67 808 E | 27369 |
| 4" | 80 | 10 | 05 67 810 E | 27370 |

| L | H | E |
|----|-----|-----|
| 16 | 84 | 52 |
| 19 | 108 | 62 |
| 22 | 119 | 70 |
| 26 | 142 | 84 |
| 31 | 167 | 94 |
| 38 | 192 | 117 |
| 44 | 232 | 148 |
| 51 | 269 | 179 |
| 61 | 279 | 179 |

COMBO VERSION

- 1½" - 2": valve with solvent socket unions + spare threaded unions in the same box
- 2½" - 4": only solvent socket or threaded unions assembled

All the models including the grid for transforming the check valve in foot valve

VERSIONE COMBO

- 1½" - 2": Valvola con manicotti incollaggio femmina + Manicotti filetto femmina in scatola.
- 2½" - 4": solo manicotti incollaggio o filetto

Tutti i modelli includono griglia per trasformazione in valvola in piedi

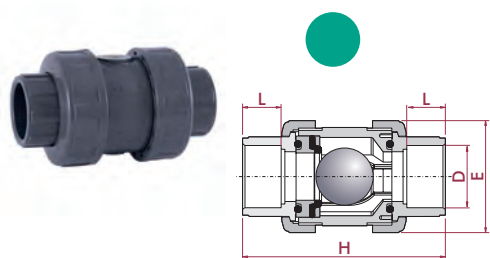
UP-B. 67. SF4. MA - VALVOLA NON RITORNO PVC-U

Ball check valve

- PVC-U body
- Female solvent socket
- ASTM series
- O-Rings in FPM

Valvola di non ritorno

- Corpo in PVC-U
- Incollaggio femmina
- Serie ASTM
- O-ring FPM



| D | DN | PN | RIF. | CODICE |
|-----|----|----|----------------|--------------|
| ½" | 15 | 16 | 05 67 801 VED | 27364 |
| ¾" | 20 | 16 | 05 67 802 VED | 27365 |
| 1" | 25 | 16 | 05 67 803 VED | 27366 |
| 1¼" | 32 | 16 | 05 67 804 VED | 27367 |
| 1½" | 40 | 16 | 05 67 805 VED | 27002 |
| 2" | 50 | 16 | 05 67 806 VED | 27003 |
| 2½" | 65 | 10 | 05 67 907 VEMA | 27377 |
| 3" | 80 | 10 | 05 67 908 VEMA | 27378 |
| 4" | 80 | 10 | 05 67 910 VEMA | 27379 |

| L | H | E |
|----|-----|-----|
| 16 | 84 | 52 |
| 19 | 108 | 62 |
| 22 | 119 | 70 |
| 26 | 142 | 84 |
| 31 | 162 | 94 |
| 38 | 192 | 117 |
| 44 | 232 | 148 |
| 51 | 269 | 179 |
| 51 | 269 | 179 |

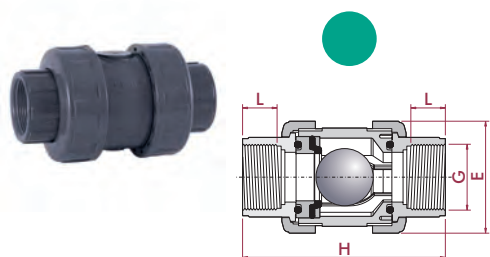
UP-B. 67. FT4. MA - VALVOLA NON RITORNO PVC-U

Ball check valve

- PVC-U body
- NPT female thread
- O-Rings in FPM

Valvola di non ritorno

- Corpo in PVC-U
- Filetto femmina NPT
- O-ring FPM



| G | DN | PN | RIF. | CODICE |
|-----|----|----|---------------|--------------|
| ½" | 15 | 16 | 05 67 801 VED | 27364 |
| ¾" | 20 | 16 | 05 67 802 VED | 27365 |
| 1" | 25 | 16 | 05 67 803 VED | 27366 |
| 1¼" | 32 | 16 | 05 67 804 VED | 27367 |
| 1½" | 40 | 16 | 05 67 805 VED | 27002 |
| 2" | 50 | 16 | 05 67 806 VED | 27003 |
| 2½" | 65 | 10 | 05 67 807 VE | 27371 |
| 3" | 80 | 10 | 05 67 808 VE | 27372 |
| 4" | 80 | 10 | 05 67 810 VE | 27373 |

| L | H | E |
|----|-----|-----|
| 16 | 84 | 52 |
| 19 | 108 | 62 |
| 22 | 119 | 70 |
| 26 | 142 | 84 |
| 31 | 167 | 94 |
| 38 | 192 | 117 |
| 44 | 232 | 148 |
| 51 | 269 | 179 |
| 61 | 279 | 179 |

COMBO VERSION

- 1½" - 2": valve with solvent socket unions + spare threaded unions in the same box
- 2½" - 4": only solvent socket or threaded unions assembled

All the models including the grid for transforming the check valve in foot valve

VERSIONE COMBO

- 1½" - 2": Valvola con manicotti incollaggio femmina + Manicotti filetto femmina in scatola.
- 2½" - 4": solo manicotti incollaggio o filetto

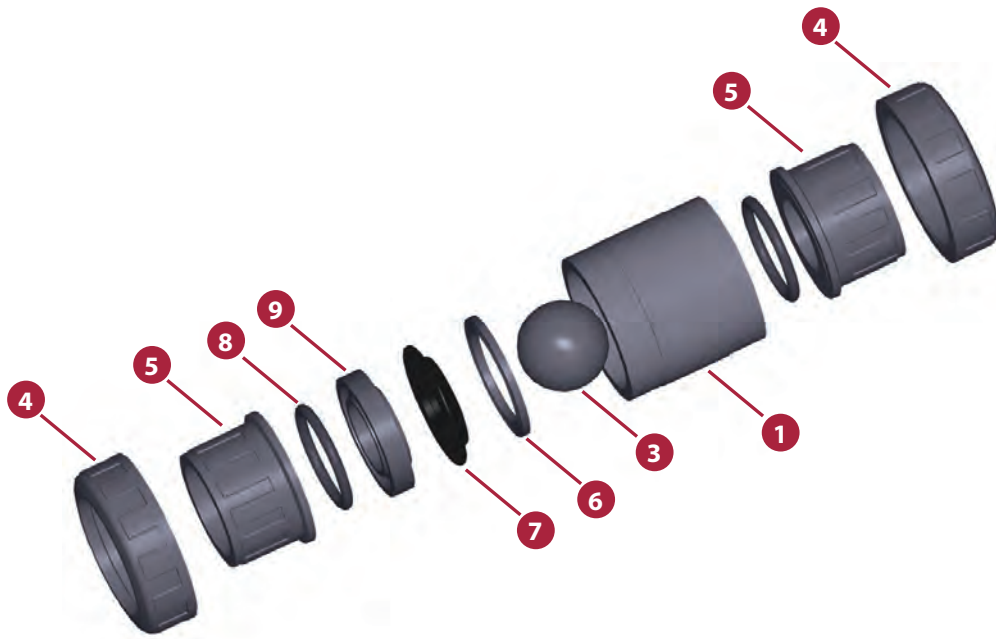
Tutti i modelli includono griglia per trasformazione in valvola in piedi

PVC-C CHECK VALVES - BALL SERIES

VALVOLE DI NON RITORNO PVC-C - SERIE SFERA

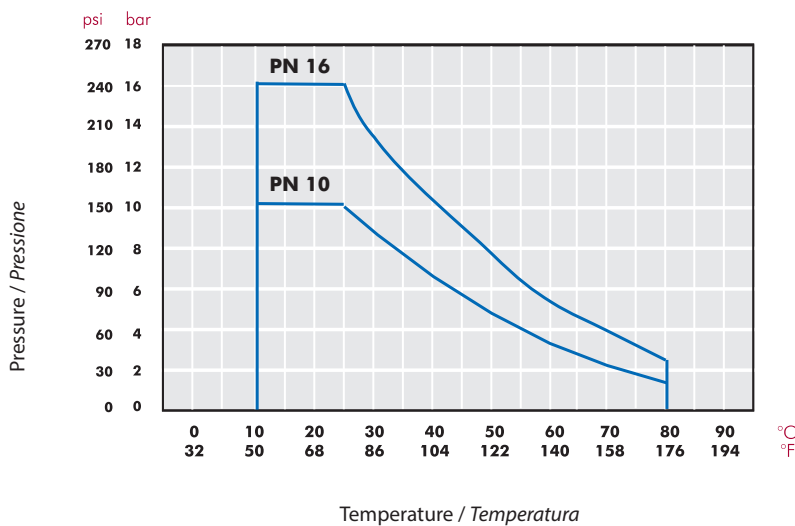


| | | |
|-----------------------------|---|---|
| Dimensioni | Incollaggio D20 - D110 (DN15 - DN100) Filettato ½" - 4" | |
| Standard | Incollaggio - Metrico, British Standard, ASTM, JIS Filettato - BSP, NPT | EN ISO 1452, EN ISO 15493, BS 4346-1, ASTM D 2467, JIS K 6743 ISO 228-1, ASTM D 2464 |
| Pressione di lavoro | @ 20°C (73°F) D20-D63 (½" - 2"): PN 16 (240 psi) D75 - D110 (2½" - 4"): PN 10 (150 psi) | |
| Pressione di ritorno minima | 0,2 bar (3 psi) Minimal downstream pressure to keep the valve closed in horizontal position. Pressione minima a valle per conservare la valvola chiusa in caso di installazione orizzontale. | |
| Materiali | O-ring: EPDM / FPM | |
| Caratteristiche | <ul style="list-style-type: none"> • Completely made in plastic - corrosion free. • 100% factory tested. • Excellent flow rate. • Easy installation and maintenance. • May be used either vertically and horizontally. • Available in PVC-U and Corzan® PVC-C. • Resistance to many inorganic chemicals. • Excellent flow characteristics. | <ul style="list-style-type: none"> • Prodotta completamente di plastica - non soggetta a corrosioni. • Testate al 100% in fabbrica. • Eccellenti caratteristiche di conduzione. • Facile installazione e manutenzione. • Può essere usata in posizione verticale o orizzontale. • Disponibile in PVC-U e Corzan® PVC-C. • Resistente a molti composti chimici inorganici. |
| Certificazioni / norme | Norma sul design valvola di non ritorno - ISO 16137:2006 | |



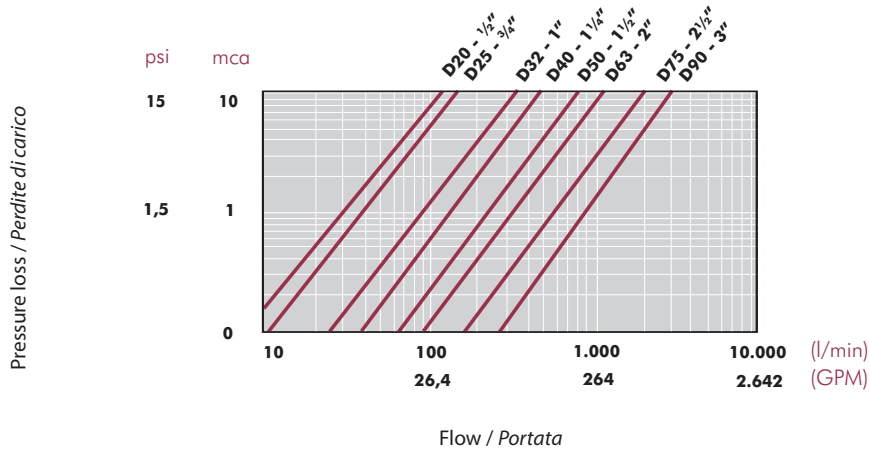
| FIG. | Parts | Parti | Materiale |
|------|----------------------|--------------------|------------|
| 1 | Body | Corpo | PVC-U |
| 3 | Ball | Sfera | PVC-U |
| 4 | Union nut | Ghiera | PVC-U |
| 5 | End connector | Manicotto | PVC-U |
| 6 | Closing ring | Anello di chiusura | PVC-U |
| 7 | Body o-ring | O-ring corpo | EPDM / FPM |
| 8 | End connector o-ring | O-ring manicotto | EPDM / FPM |
| 9 | Seal-carrier | Porta o-ring | PVC-U |

PRESSURE / TEMPERATURE GRAPH
DIAGRAMMA PRESSIONE / TEMPERATURA



Life: 25 years
 Hydrostatic maximum pressure a component may withstand in continuous service (without overpressure)

Vita utile: 25 anni
Pressione idrostatica massima considerando la capacità massima di sopportazione in servizio continuo (senza sovrappressione)

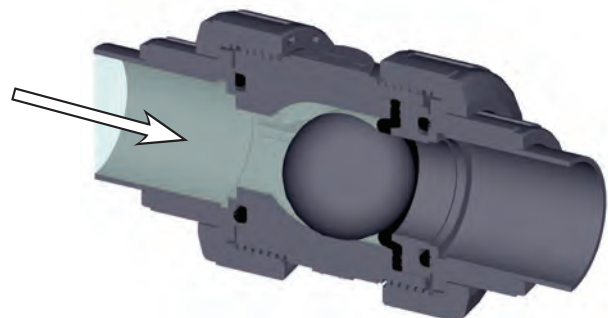
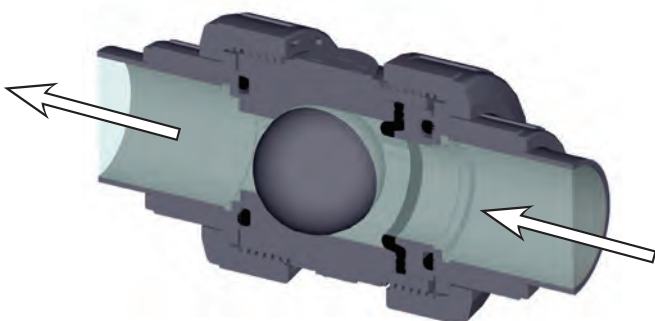
PRESSURE LOSS DIAGRAM
DIAGRAMMA DELLE PERDITE DI CARICO

RELATIVE FLOW
FLUSSO RELATIVO

| D | 20-1/2" | 25-3/4" | 32-1" | 40-1 1/4" | 50-1 1/2" | 63-2" | 75-2 1/2" | 90-3" |
|------------|---------|---------|-------|-----------|-----------|-------|-----------|-------|
| DN | 15 | 20 | 25 | 32 | 40 | 50 | 65 | 80 |
| Kv_{100} | 99 | 128 | 308 | 453 | 795 | 1040 | 1932 | 2754 |
| Cv | 7 | 9 | 22 | 32 | 56 | 73 | 135 | 193 |

$Cv = Kv_{100} / 14,28$
 Kv_{100} (l/min, $\Delta p = 1$ bar)
 Cv (GPM, $\Delta p = 1$ psi)

Open
Aperta

Closed
Chiusa



ASSEMBLY INSTRUCTIONS

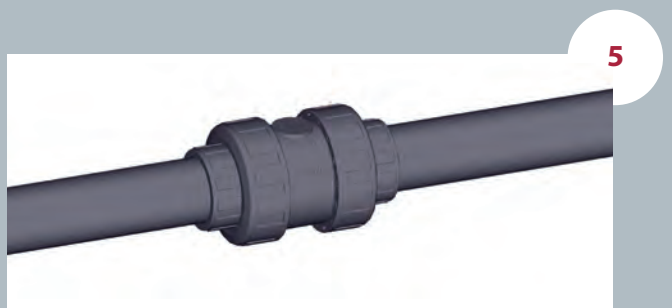
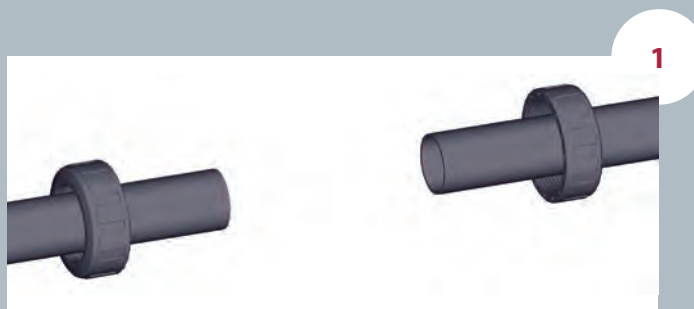
Solvent socket or threaded unions

Loosen the valve union nuts (4) and separate these and the end connectors (5) from the valve body. Pass the pipe through the nuts and then place the bushes over the end of the pipe. The socket unions should be glued onto the pipe using a PVC-U or PVC-C adhesive and pressure should not be applied to the system until a drying period of at least 1 hour per bar of working pressure has elapsed. In the case of threaded unions, PTFE tape should be applied to the male threads. The pipes can now be attached to the valve by hand tightening down the nuts.

ISTRUZIONI DI MONTAGGIO

Unioni incollate o filettate

Svitare le ghiera (4) dalla valvola e separarle dai manicotti (5). Introdurre le ghiera nei tubi e successivamente fissare i manicotti negli estremi del tubo. Le unioni incollate si realizzano con un collante per tubi in PVC-U o PVC-C rigido e non si applicherà pressione finché non sia trascorsa almeno 1 ora per bar. Nelle unioni filettate si porrà nastro di PTFE sui filetti maschio. Terminata questa fase si potrà collocare la valvola tra i manicotti e avvitare a mano le ghiera sopra la valvola.

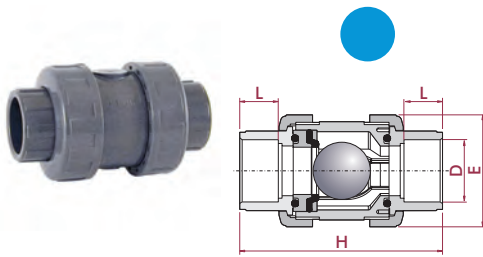


CP-B. 67. SF1 - VALVOLA DI NON RITORNO IN PVC-C A SFERA
Ball check valve

- Corzan® PVC-C body
- Female solvent socket
- Metric series
- O-Rings in EPDM

Valvola di non ritorno

- Corpo in Corzan® PVC-C
- Incollaggio femmina
- Serie metrica
- O-ring EPDM



| D | DN | PN | RIF. | CODICE |
|-----|----|----|-----------|--------------|
| 20 | 15 | 16 | 35 67 220 | 27501 |
| 25 | 20 | 16 | 35 67 225 | 27502 |
| 32 | 25 | 16 | 35 67 232 | 27503 |
| 40 | 32 | 16 | 35 67 240 | 27504 |
| 50 | 40 | 16 | 35 67 250 | 27505 |
| 63 | 50 | 16 | 35 67 263 | 27506 |
| 75 | 65 | 10 | 35 67 275 | 27507 |
| 90 | 80 | 10 | 35 67 290 | 27508 |
| 110 | 80 | 10 | 35 67 310 | 27509 |

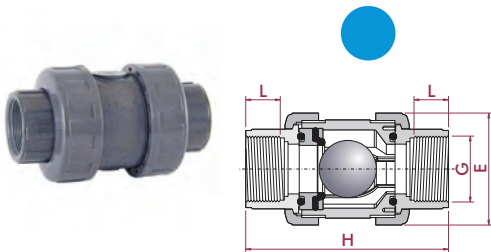
| L | H | E |
|----|-----|-----|
| 16 | 84 | 52 |
| 19 | 108 | 62 |
| 22 | 119 | 70 |
| 26 | 142 | 84 |
| 31 | 162 | 94 |
| 38 | 192 | 117 |
| 44 | 232 | 148 |
| 51 | 269 | 179 |
| 51 | 269 | 179 |

CP-B. 67. FT1 - PVC-C BALL CHECK VALVE
Ball check valve

- Corzan® PVC-C body
- BSP female thread
- O-Rings in EPDM

Valvola di non ritorno

- Corpo in Corzan® PVC-C
- Filetto femmina BSP
- O-ring EPDM



| G | DN | PN | RIF. | CODICE |
|-----|----|----|-----------|--------------|
| ½" | 15 | 16 | 35 67 420 | 27510 |
| ¾" | 20 | 16 | 35 67 425 | 27511 |
| 1" | 25 | 16 | 35 67 432 | 27512 |
| 1¼" | 32 | 16 | 35 67 440 | 27513 |
| 1½" | 40 | 16 | 35 67 450 | 27514 |
| 2" | 50 | 16 | 35 67 463 | 27515 |
| 2½" | 65 | 10 | 35 67 475 | 27516 |
| 3" | 80 | 10 | 35 67 490 | 27517 |
| 4" | 80 | 10 | 35 67 510 | 27518 |

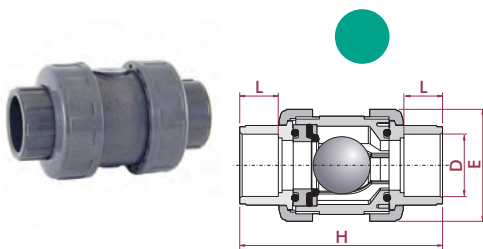
| L | H | E |
|----|-----|-----|
| 16 | 84 | 52 |
| 19 | 108 | 62 |
| 22 | 119 | 70 |
| 26 | 142 | 84 |
| 31 | 162 | 94 |
| 38 | 192 | 117 |
| 44 | 232 | 148 |
| 51 | 269 | 179 |
| 51 | 269 | 179 |

CP-B. 67. SF4 - VALVOLA DI NON RITORNO IN PVC-C A SFERA
Ball check valve

- Corzan® PVC-C body
- Female solvent socket
- Metric series
- O-Rings in FPM

Valvola di non ritorno

- Corpo in Corzan® PVC-C
- Incollaggio femmina
- Serie metrica
- O-ring FPM



| D | DN | PN | RIF. | CODICE |
|-----|----|----|--------------|--------------|
| 20 | 15 | 16 | 35 67 220 VI | 27519 |
| 25 | 20 | 16 | 35 67 225 VI | 27520 |
| 32 | 25 | 16 | 35 67 232 VI | 27521 |
| 40 | 32 | 16 | 35 67 240 VI | 27522 |
| 50 | 40 | 16 | 35 67 250 VI | 27523 |
| 63 | 50 | 16 | 35 67 263 VI | 27524 |
| 75 | 65 | 10 | 35 67 275 VI | 27525 |
| 90 | 80 | 10 | 35 67 290 VI | 27526 |
| 110 | 80 | 10 | 35 67 310 VI | 27527 |

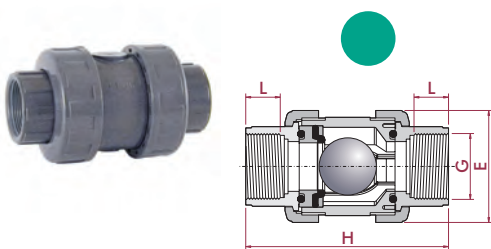
| L | H | E |
|----|-----|-----|
| 16 | 84 | 52 |
| 19 | 108 | 62 |
| 22 | 119 | 70 |
| 26 | 142 | 84 |
| 31 | 162 | 94 |
| 38 | 192 | 117 |
| 44 | 232 | 148 |
| 51 | 269 | 179 |
| 51 | 269 | 179 |

CP-B. 67. FT4 - VALVOLA DI NON RITORNO IN PVC-C A SFERA
Ball check valve

- Corzan® PVC-C body
- BSP female thread
- O-Rings in FPM

Valvola di non ritorno

- Corpo in Corzan® PVC-C
- Filetto femmina BSP
- O-ring FPM



| G | DN | PN | RIF. | CODICE |
|-----|----|----|--------------|--------------|
| ½" | 15 | 16 | 35 67 420 VI | 27528 |
| ¾" | 20 | 16 | 35 67 425 VI | 27529 |
| 1" | 25 | 16 | 35 67 432 VI | 27530 |
| 1¼" | 32 | 16 | 35 67 440 VI | 27531 |
| 1½" | 40 | 16 | 35 67 450 VI | 27532 |
| 2" | 50 | 16 | 35 67 463 VI | 27533 |
| 2½" | 65 | 10 | 35 67 475 VI | 27534 |
| 3" | 80 | 10 | 35 67 490 VI | 27535 |
| 4" | 80 | 10 | 35 67 510 VI | 27536 |

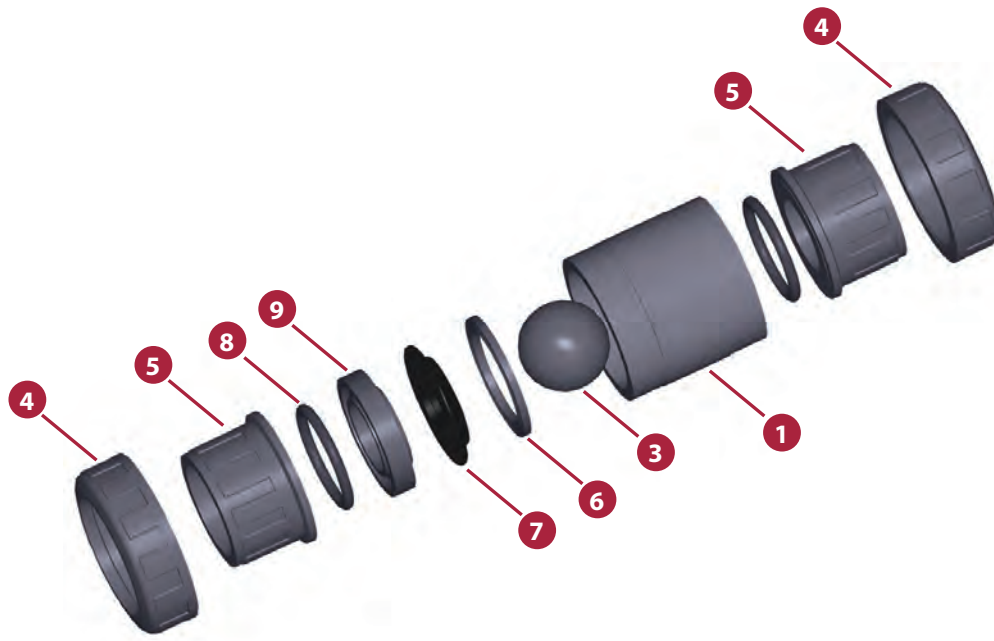
| L | H | E |
|----|-----|-----|
| 16 | 84 | 52 |
| 19 | 108 | 62 |
| 22 | 119 | 70 |
| 26 | 142 | 84 |
| 31 | 162 | 94 |
| 38 | 192 | 117 |
| 44 | 232 | 148 |
| 51 | 269 | 179 |
| 51 | 269 | 179 |

PVC-C CHECK VALVES - BALL SERIES

VALVOLA DI NON RITORNO PVC-C - SERIE SFERA

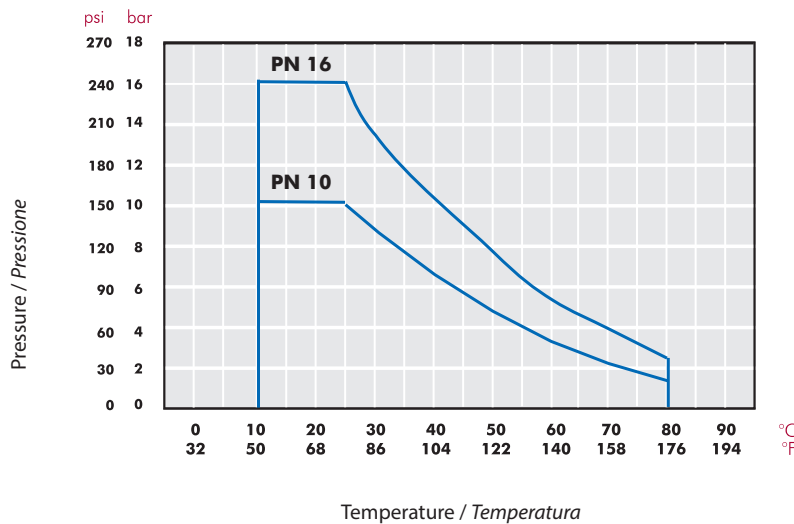


| | | |
|-----------------------------|---|---|
| Dimensioni | Incollaggio D20 - D110 (DN15 - DN100) Filettato ½" - 4" | |
| Standard | Incollaggio - Metrico, British Standard, ASTM, JIS Filettato - BSP, NPT | EN ISO 1452, EN ISO 15493, BS 4346-1, ASTM D 2467, JIS K 6743 ISO 228-1, ASTM D 2464 |
| Pressione di lavoro | @ 20°C (73°F) D20-D63 (½" - 2"): PN 16 (240 psi) D75 - D110 (2½" - 4"): PN 10 (150 psi) | |
| Pressione di ritorno minima | 0,2 bar (3 psi) Minimal downstream pressure to keep the valve closed in horizontal position. Pressione minima a valle per conservare la valvola chiusa in caso di installazione orizzontale. | |
| Materiali | O-ring: EPDM / FPM | |
| Caratteristiche | <ul style="list-style-type: none"> • Completely made in plastic - corrosion free. • 100% factory tested. • Excellent flow rate. • Easy installation and maintenance. • May be used either vertically and horizontally. • Available in PVC-U and Corzan® PVC-C. • Resistance to many inorganic chemicals. • Excellent flow characteristics. | <ul style="list-style-type: none"> • Prodotta completamente di plastica - non soggetta a corrosioni. • Testate al 100% in fabbrica. • Eccellenti caratteristiche di conduzione. • Facile installazione e manutenzione. • Può essere usata in posizione verticale o orizzontale. • Disponibile in PVC-U e Corzan® PVC-C. • Resistente a molti composti chimici inorganici. |
| Certificazioni / norme | Norma sul design valvola di non ritorno - ISO 16137:2006 | |



| FIG. | Parts | Parti | Materiale |
|------|----------------------|--------------------|------------|
| 1 | Body | Corpo | PVC-C |
| 3 | Ball | Sfera | PVC-C |
| 4 | Union nut | Ghiera | PVC-C |
| 5 | End connector | Manicotto | PVC-C |
| 6 | Closing ring | Anello di chiusura | PVC-C |
| 7 | Body o-ring | O-ring corpo | EPDM / FPM |
| 8 | End connector o-ring | O-ring manicotto | EPDM / FPM |
| 9 | Seal-carrier | Porta o-ring | PVC-C |

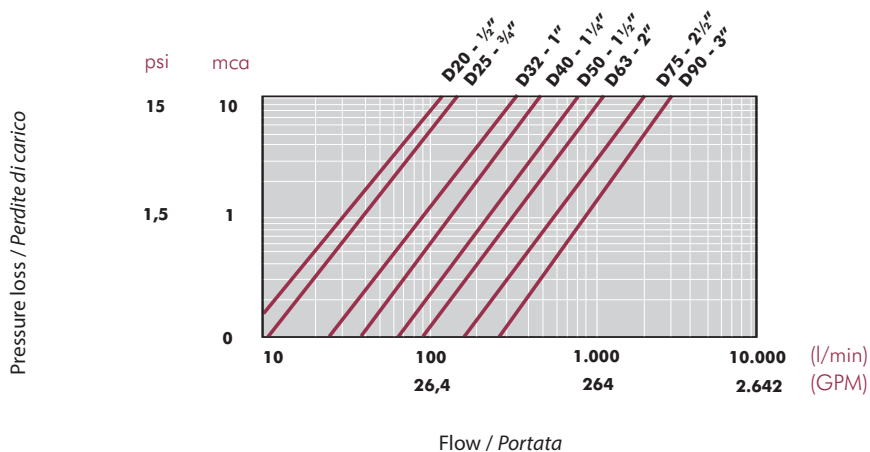
PRESSURE / TEMPERATURE GRAPH
DIAGRAMMA PRESSIONE / TEMPERATURA



Life: 25 years
 Hydrostatic maximum pressure a component may withstand in continuous service (without overpressure)

Vita utile: 25 anni
Pressione idrostatica massima considerando la capacità massima di sopportazione in servizio continuo (senza sovrappressione)

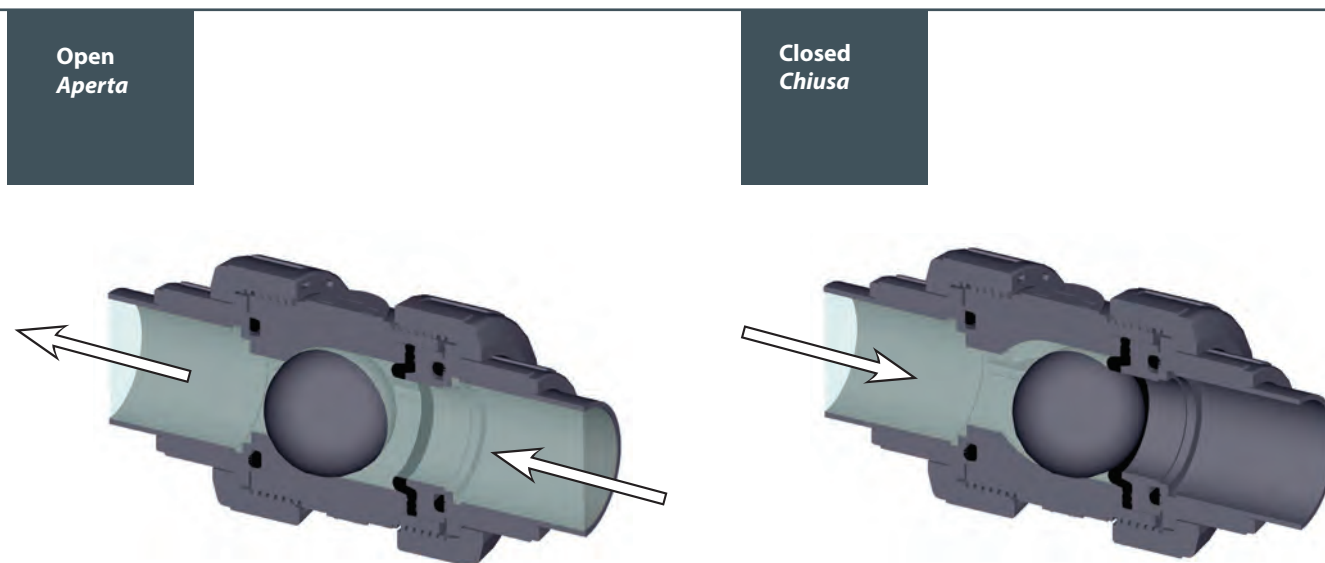
PRESSURE LOSS DIAGRAM
DIAGRAMMA DELLE PERDITE DI CARICO



RELATIVE FLOW
FLUSSO RELATIVO

| D | 20-1/2" | 25-3/4" | 32-1" | 40-1 1/4" | 50-1 1/2" | 63-2" | 75-2 1/2" | 90-3" |
|------------|---------|---------|-------|-----------|-----------|-------|-----------|-------|
| DN | 15 | 20 | 25 | 32 | 40 | 50 | 65 | 80 |
| K_{v100} | 99 | 128 | 308 | 453 | 795 | 1040 | 1932 | 2754 |
| Cv | 7 | 9 | 22 | 32 | 56 | 73 | 135 | 193 |

$Cv = K_{v100} / 14,28$
 K_{v100} (l/min, $\Delta p = 1$ bar)
 Cv (GPM, $\Delta p = 1$ psi)



ASSEMBLY INSTRUCTIONS

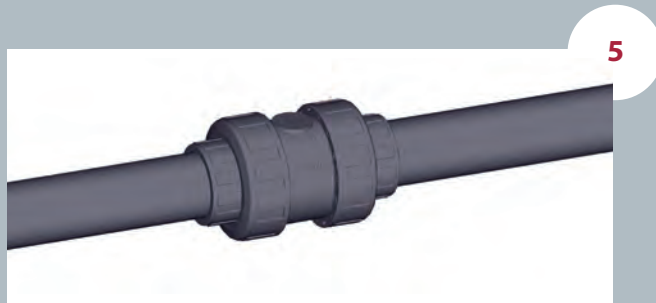
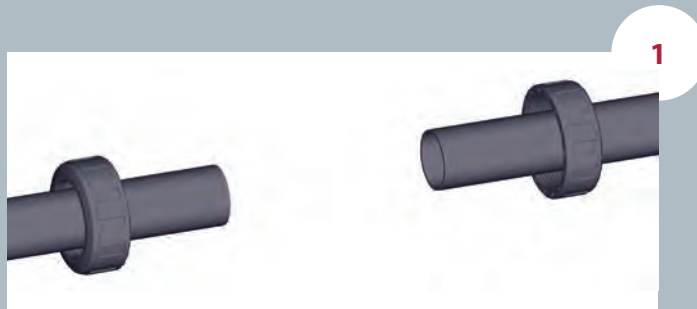
Solvent socket or threaded unions

Loosen the valve union nuts (4) and separate these and the end connectors (5) from the valve body. Pass the pipe through the nuts and then place the bushes over the end of the pipe. The socket unions should be glued onto the pipe using a PVC-U or PVC-C adhesive and pressure should not be applied to the system until a drying period of at least 1 hour per bar of working pressure has elapsed. In the case of threaded unions, PTFE tape should be applied to the male threads. The pipes can now be attached to the valve by hand tightening down the nuts.

ISTRUZIONI DI MONTAGGIO

Unioni incollate o filettate

Svitare le ghiere (4) dalla valvola e separarle dai manicotti (5). Introdurre le ghiere nei tubi e successivamente fissare i manicotti negli estremi del tubo. Le unioni incollate si realizzano con un collante per tubi in PVC-U o PVC-C rigido e non si applicherà pressione finché non sia trascorsa almeno 1 ora per bar. Nelle unioni filettate si porrà nastro di PTFE sui filetti maschio. Terminata questa fase si potrà collocare la valvola tra i manicotti e avvitare a mano le ghiere sopra la valvola.



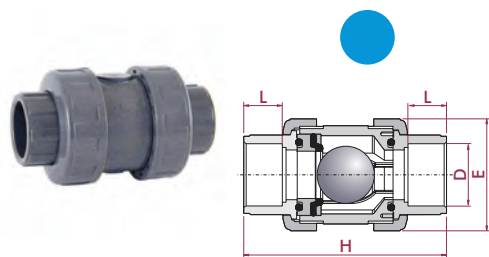
CP-B. 67. SF1. MA - VALVOLA DI NON RITORNO IN PVC-C A SFERA

Ball check valve

- Corzan® PVC-C body
- Female solvent socket
- ASTM series
- O-Rings in EPDM

Valvola di non ritorno

- Corpo in Corzan® PVC-C
- Incollaggio femmina
- Serie ASTM
- O-ring EPDM



| D | DN | PN | RIF. | CODICE |
|-----|----|----|---------------|--------------|
| ½" | 15 | 16 | 35 67 801 ED | 27380 |
| ¾" | 20 | 16 | 35 67 802 ED | 27381 |
| 1" | 25 | 16 | 35 67 803 ED | 27382 |
| 1¼" | 32 | 16 | 35 67 804 ED | 27383 |
| 1½" | 40 | 16 | 35 67 805 ED | 27384 |
| 2" | 50 | 16 | 35 67 806 ED | 27385 |
| 2½" | 65 | 10 | 35 67 907 EMA | 27397 |
| 3" | 80 | 10 | 35 67 908 EMA | 27398 |
| 4" | 80 | 10 | 35 67 910 EMA | 27433 |

| L | H | E |
|----|-----|-----|
| 16 | 84 | 52 |
| 19 | 108 | 62 |
| 22 | 119 | 70 |
| 26 | 142 | 84 |
| 31 | 162 | 94 |
| 38 | 192 | 117 |
| 44 | 232 | 148 |
| 51 | 269 | 179 |
| 51 | 269 | 179 |

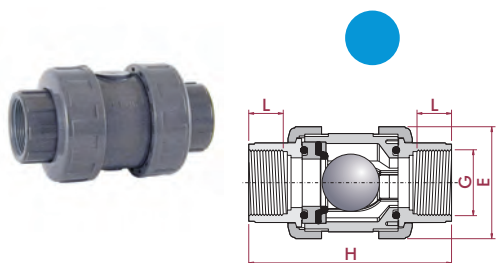
CP-B. 67. FT1. MA - VALVOLA DI NON RITORNO IN PVC-C A SFERA

Ball check valve

- Corzan® PVC-C body
- NPT female thread
- O-Rings in EPDM

Valvola di non ritorno

- Corpo in Corzan® PVC-C
- Filetto femmina NPT
- O-ring EPDM



| G | DN | PN | RIF. | CODICE |
|-----|----|----|--------------|--------------|
| ½" | 15 | 16 | 35 67 801 ED | 27380 |
| ¾" | 20 | 16 | 35 67 802 ED | 27381 |
| 1" | 25 | 16 | 35 67 803 ED | 27382 |
| 1¼" | 32 | 16 | 35 67 804 ED | 27383 |
| 1½" | 40 | 16 | 35 67 805 ED | 27384 |
| 2" | 50 | 16 | 35 67 806 ED | 27385 |
| 2½" | 65 | 10 | 35 67 807 E | 27392 |
| 3" | 80 | 10 | 35 67 808 E | 27393 |
| 4" | 80 | 10 | 35 67 810 E | 27432 |

| L | H | E |
|----|-----|-----|
| 16 | 84 | 52 |
| 19 | 108 | 62 |
| 22 | 119 | 70 |
| 26 | 142 | 84 |
| 31 | 162 | 94 |
| 38 | 192 | 117 |
| 44 | 232 | 148 |
| 51 | 269 | 179 |
| 51 | 269 | 179 |

COMBO VERSION

- 1½" - 2": valve with solvent socket unions + spare threaded unions in the same box
- 2½" - 4": only solvent socket or threaded unions assembled

All the models including the grid for transforming the check valve in foot valve

VERSIONE COMBO

- 1½" - 2": Valvola con manicotti incollaggio femmina + Manicotti filetto femmina in scatola.
- 2½" - 4": solo manicotti incollaggio o filetto

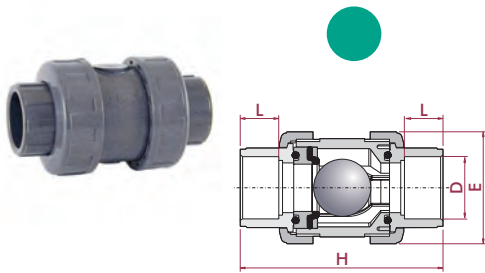
Tutti i modelli includono griglia per trasformazione in valvola di fondo

CP-B. 67. SF4. MA - VALVOLA DI NON RITORNO IN PVC-C A SFERA
Ball check valve

- Corzan® PVC-C body
- Female solvent socket
- ASTM series
- O-Rings in FPM

Valvola di non ritorno

- Corpo in Corzan® PVC-C
- Incollaggio femmina
- Serie ASTM
- O-ring FPM



| D | DN | PN | RIF. | CODICE |
|-----|----|----|----------------|--------------|
| ½" | 15 | 16 | 35 67 801 VED | 27386 |
| ¾" | 20 | 16 | 35 67 802 VED | 27387 |
| 1" | 25 | 16 | 35 67 803 VED | 27388 |
| 1¼" | 32 | 16 | 35 67 804 VED | 27389 |
| 1½" | 40 | 16 | 35 67 805 VED | 27390 |
| 2" | 50 | 16 | 35 67 806 VED | 27391 |
| 2½" | 65 | 10 | 35 67 907 VEMA | 27399 |
| 3" | 80 | 10 | 35 67 908 VEMA | 27400 |
| 4" | 80 | 10 | 35 67 910 VEMA | 27401 |

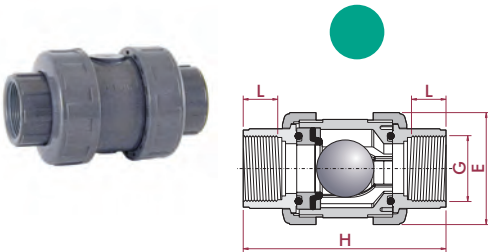
| L | H | E |
|----|-----|-----|
| 16 | 84 | 52 |
| 19 | 108 | 62 |
| 22 | 119 | 70 |
| 26 | 142 | 84 |
| 31 | 162 | 94 |
| 38 | 192 | 117 |
| 44 | 232 | 148 |
| 51 | 269 | 179 |
| 51 | 269 | 179 |

CP-B. 67. FT4. MA - VALVOLA DI NON RITORNO IN PVC-C A SFERA
Ball check valve

- Corzan® PVC-C body
- NPT female thread
- O-Rings in FPM

Valvola di non ritorno

- Corpo in Corzan® PVC-C
- Filetto femmina NPT
- O-ring FPM



| G | DN | PN | RIF. | CODICE |
|-----|----|----|---------------|--------------|
| ½" | 15 | 16 | 35 67 801 VED | 27386 |
| ¾" | 20 | 16 | 35 67 802 VED | 27387 |
| 1" | 25 | 16 | 35 67 803 VED | 27388 |
| 1¼" | 32 | 16 | 35 67 804 VED | 27389 |
| 1½" | 40 | 16 | 35 67 805 VED | 27390 |
| 2" | 50 | 16 | 35 67 806 VED | 27391 |
| 2½" | 65 | 10 | 35 67 807 VE | 27394 |
| 3" | 80 | 10 | 35 67 808 VE | 27395 |
| 4" | 80 | 10 | 35 67 810 VE | 27396 |

| L | H | E |
|----|-----|-----|
| 16 | 84 | 52 |
| 19 | 108 | 62 |
| 22 | 119 | 70 |
| 26 | 142 | 84 |
| 31 | 162 | 94 |
| 38 | 192 | 117 |
| 44 | 232 | 148 |
| 51 | 269 | 179 |
| 51 | 269 | 179 |

COMBO VERSION

- 1½" - 2": valve with solvent socket unions + spare threaded unions in the same box
- 2½" - 4": only solvent sokcet or threaded unions assembled

All the models including the grid for transforming the check valve in foot valve

VERSIONE COMBO

- 1½" - 2": Valvola con manicotti incollaggio femmina + Manicotti filetto femmina in scatola.
- 2½" - 4": solo manicotti incollaggio o filetto

Tutti i modelli includono griglia per trasformazione in valvola di fondo