

### PVC Compact Ball Valves



[ 1/2" - 2" ]



[ 2 1/2" - 4" ]

**Cepex introduces its range of  
PVC Compact Ball Valves with sizes from 1/2" to 6"**

#### Description

This new addition to the CEPEX valve family provides reliable performance at an exceptional price.

#### Color

White (1/2" - 4")

Gray (1/2" - 6")

#### Characteristics and Benefits

- Sizes: 1/2" - 6"
- Rated at 150 PSI @ 73° F
- End configurations: ASTM socket or female NPT threaded.
- Construction: PVC body, EPDM seals.
- No internal parts to replace: maintenance-free.
- Lightweight and compact: easy to install.
- All-plastic construction: corrosion free.

#### Materials

- PVC Body
- PVC Stem and Ball
- EPDM Seals
- ABS Handle



[ 6" ]



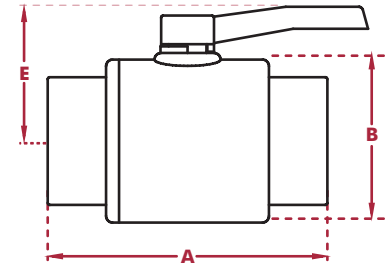
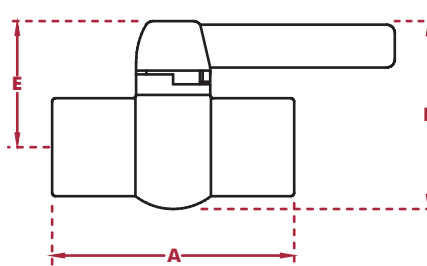
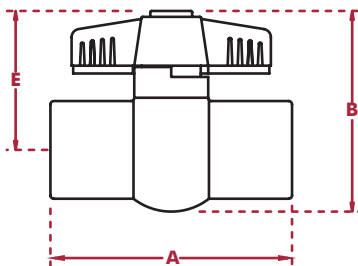
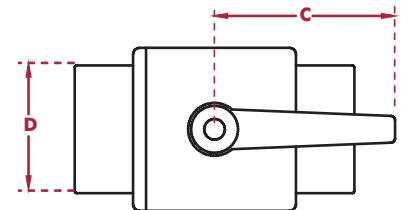
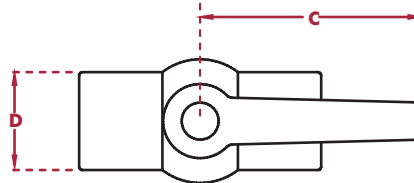
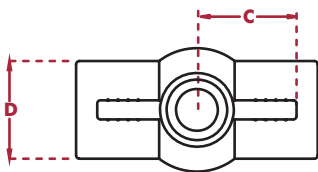
# technical specifications

### MATERIALS OF CONSTRUCTION:

<b>BODY</b>	PVC
<b>BALL &amp; STEM</b>	PVC
<b>O-RING</b>	EPDM
<b>HANDLE</b>	ABS
<b>CAP</b>	ABS

### DIMENSIONS

SIZE	A	B	C	D	E
1/2"	3.15	2.44	1.38	1.19	1.83
3/4"	3.62	3.07	1.52	1.44	2.05
1"	3.86	3.66	1.99	1.75	2.56
1-1/4"	4.45	3.86	2.17	2.11	2.85
1-1/2"	5.16	4.53	2.17	2.44	2.89
2"	5.87	6.05	2.78	2.83	3.50
2-1/2"	6.55	6.00	6.38	3.65	3.75
3"	8.63	6.31	6.38	4.22	4.10
4"	11.88	8.56	8.50	5.28	6.45
6"	15.88	9.25	10.25	7.25	7.63



[ 1/2" - 2" ]

[ 2 1/2" - 4" ]

[ 6" ]

IMPORTED BY CEPEX USA, INC.



CEPEX USA, INC.

13291 - 106 Vantage Way  
Jacksonville, FL 32218

Tel.: (904) 695 1441 - Fax: (904) 695 1442

Website: www.cepexusa.com - Email: info@cepexusa.com